

Open to the Public!



# SUMMER *to* DISCOVER



**Camp Guide 2012**

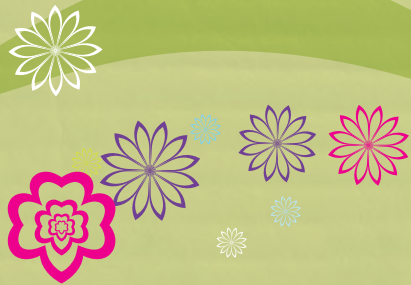
*Discover new adventures!*



*Discover new friends!*



*Discover new fun!*



**girl scouts**  
greater los angeles



# TABLE OF CONTENTS

## GIRL SCOUTS OF GREATER LOS ANGELES

### Headquarters

801 S. Grand Ave.  
Suite 300  
Los Angeles, CA 90017  
[www.girlscoutsla.org](http://www.girlscoutsla.org)

### Business Hours:

M–F 8:30 a.m. – 5 p.m.  
(GSGLA offices are  
closed on the 2nd and  
4th Mondays of each  
month.)

Questions about camp  
programs and registration  
should be directed to  
the GSGLA Registration  
Dept.

GSGLA Registration  
Department  
9525 Monte Vista Ave.  
Montclair, CA 91763  
(626) 677-3600 phone  
(909) 624-7928 fax  
[campregistration@girlscoutsla.org](mailto:campregistration@girlscoutsla.org)

GSGLA is committed to  
the extraordinary legacy  
of Girl Scouts and its  
mission to build girls of  
courage, confidence and  
character, who make the  
world a better place.

For more information on  
how to join, volunteer,  
reconnect or donate,  
call (213) 213-0150 or  
1-888-GSGLA-4-U or visit  
[www.girlscoutsla.org](http://www.girlscoutsla.org).

GSGLA is an Equal  
Opportunity Employer.

Información disponible  
en Español o llamando al  
1-888-GSGLA-4-U.

<b>WELCOME TO CAMP!</b> .....	1
<b>GIRL SCOUT CAMP PROPERTY HIGHLIGHTS</b> .....	2
<b>CAMP REGISTRATION</b> .....	4
<b>FINANCIAL AID</b> .....	5
<b>FREQUENTLY ASKED QUESTIONS</b> .....	6
<b>CAMP OSITO RANCHO RESIDENT CAMP</b> .....	8
<b>DAY CAMPS</b>	
El Ranchito.....	12
Marine Landing.....	14
Camp Mariposa.....	16
Camp Montrose .....	17
Camp Covina .....	17
<b>SPECIALTY CAMPS</b>	
Specialty Day & Overnight Camps (girls & troops)	18
Specialty Overnight Camps (troops & families)	20
<b>FORMS</b> .....	21
<b>CAMP OSITO WORK PARTY WEEKEND</b> .....	Back Cover





## WELCOME TO CAMP!

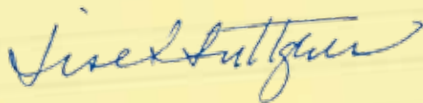
Dear GSQLA Girl Scouts and Girl Scout Families:

Welcome to the 2012 camp season! It's another summer to discover new adventures and this year of camp programming is sure to be nothing less than phenomenal. Not only are the 2012 camp offerings more adventurous, more creative and more exciting, but this will be the year that marks the 100th year of Girl Scouting. With camp as a cornerstone of Girl Scout history, this will be an extraordinary year to participate. After all, we're celebrating a century of outdoor adventure!

Our council has invested in our properties to upgrade and modernize our facilities. We have also worked diligently to provide programs and activities that are fun, engaging, skill-building and relevant to our centennial generation of campers.

I invite you to peruse all of the listings in the 2012 Camp Guide and join us at one or more of our wonderful camp offerings. Have a great summer!

Yours in Girl Scouting,



Lise L. Luttgens  
Chief Executive Officer



### PROMOTING YOUTH DEVELOPMENT

Girl Scouts is the premier leadership organization for girls! Girl Scouts of Greater Los Angeles supports the mission of the organization by providing engaging and empowering opportunities, such as camp experiences, to more than 41,000 girls and young women.

According to an American Camp Association (ACA) study, camp engages youth to learn about themselves while gaining skills in:

- Leadership
- Independence
- Social Comfort
- Self-esteem
- Friendship Skills
- Adventure & Exploration
- Environmental Awareness
- Values & Decisions
- Peer Relationships
- Spirituality



# GIRL SCOUT CAMP PROPERTY HIGHLIGHTS



## CAMP MARIPOSA

Camp Mariposa is a cozy camp in the foothills of Altadena in the San Gabriel Valley. It includes a wooded area with a small pond and a campfire ring with an adjacent amphitheater. The camp will host weeklong themed day camps.

## CAMP OSITO RANCHO

This premier Girl Scout Outdoor Leadership Center is a spectacular 160-acre high adventure mountain camp located at 7,500 feet in the San Bernardino Mountains above Big Bear Lake. Activities include swimming, archery, sports, a variety of games, nature and environmental activities, challenge/ropes course, hiking, outdoor cooking, canoeing, horseback riding, and arts and crafts.

## COVINA PROGRAM CENTER

Covina Program Center, located in Covina, offers a backdrop for wonderful outdoor activities and adventures. This is a great environment for girls to get a taste of camp.

## EL RANCHITO

El Ranchito is an outdoor, park-like property at GSGLA's Long Beach Service Center that includes outdoor and indoor sleeping accommodations. El Ranchito will host weeklong themed day camps.

## MARINE LANDING

Located on Alamitos Bay in Long Beach, Marine Landing is a one-of-a-kind waterfront facility offering a private boating beach, charming boathouse and beautiful sea views. Camp sessions will include boating and marine activities plus swimming and plenty of playtime at the beach.

## MONTROSE PROGRAM CENTER

Montrose Program Center is located in Montrose, a small foothill community in the San Gabriel Valley. This center features a charming outdoor space with a deck and a campfire circle.

## SKYLAND RANCH

Located in a pine and oak tree forest near Idyllwild, Skyland Ranch offers girls a chance to explore the beautiful San Jacinto Mountains. This beautiful property encompasses 195 acres of pine and oak forests, chaparral, and apple orchards. This is a wonderful place to enjoy a session at camp!







## Don't forget to Early Bird Register!

Activate your eBiz Account today!  
You must activate your eBiz account in order to  
sign up for Girl Scout events AND to Early Bird  
Register ONLINE for the 2012-2013 year!

Early Bird Registration begins April 1, 2012 and ends July 1, 2012.

Beat the rush and register early!

Need help? Contact the Help Desk at [helpdesk@girlscoutsla.org](mailto:helpdesk@girlscoutsla.org)

**Did you know?**

**Girls who Early Bird Register **ONLINE** using eBiz  
will receive a special incentive for**



---

**October 26 - 28, 2012  
Lake Perris State Recreation Area  
Perris, CA**

For more information about GSGLA's 100th Anniversary events,  
visit [www.girlscoutsla.org](http://www.girlscoutsla.org)



# CAMP REGISTRATION

## WHEN TO REGISTER

Registration for all summer camps opens February 15, 2012. Registrations are processed on a first come, first served basis. We encourage current Girl Scouts to register online to expedite the registration process.

## HOW TO REGISTER

There are two ways to register:

- Online at [www.girlscoutsla.org](http://www.girlscoutsla.org) – registrants must **already have an online eBiz account or be able to activate one**. (Please direct questions regarding eBiz account activation to [helpdesk@girlscoutsla.org](mailto:helpdesk@girlscoutsla.org))
- Submit a completed paper registration by fax, email, mail or over the counter at any one of our seven service centers.

Current Girl Scout Members are encouraged to register online at [www.girlscoutsla.org](http://www.girlscoutsla.org). Our online eBiz system accepts all major credit cards. GSGLA giftcards are not accepted online. Your daughter will need an active eBiz account in order to use the registration site. An email address must be provided with each account (if under 13, parent's email should be listed). **Email is the main form of camp communication, so please be sure to enter an email address that you actively use.** Parents of multiple campers may use the same email for more than one eBiz account at a time.

Non-Girl Scout Members should submit their initial camp registration in person, by fax or by mail. If additional camps are of interest later, they may register online once their account has been activated on eBiz. Registration forms are located in the back of this booklet and in the Forms Library at [www.girlscoutsla.org](http://www.girlscoutsla.org) (KEYWORD: camp). Non-member girls must submit a Girl Scout Membership Registration fee of \$12 with their camp registration. Registrations may be submitted at any of our seven locations; faxed to (909) 624-7928; or mailed to: GSGLA Montclair Service Center, 9525 Monte Vista Ave., Montclair, CA 91763 C/O Camp Registrar.

Deposits are required for all camps unless Financial Aid has been requested. **Deposits are non-refundable and non-transferable between camps.** If preferable, payment can be made in full at the time of registration.

Girls who would like to request a “camp buddy” may do so online, or on their paper registrations. Girls must register for the same camp session. While every attempt is made to place girls together, it is not guaranteed. To ensure space for both girls in the same camp session, paper registrations should be submitted together, or girls should be registered online at the same time.

Camp fee balances are due 4 weeks prior to the start of every camp session. Late payments may result in a loss of placement in the camp and forfeit of the deposit. It is the responsibility of the camper's parent to pay camp fee balances by this deadline, regardless of whether an invoice is received. Balances may be checked and paid online on the camper's eBiz account. **If a registration is submitted after balances are due, payment in full is required.**

Confirmations will be sent by email and will include a link to the health history forms (also available at [www.girlscoutsla.org](http://www.girlscoutsla.org)). If no email address is provided, confirmations and health history forms will be sent by mail upon registration.

## REFUND POLICY

Registrations are processed on a first come, first served basis. If your camper's selected camp is full and no alternative is available, you will receive a full refund for any deposit or fees paid. **All deposits for all camps are otherwise non-refundable and non-transferrable.**

Exceptions to this policy include:

- If a camper can no longer attend camp due to illness or injury – *a physician's letter must accompany refund request.*
- If a camper is sent home from camp due to illness or injury that occurred at camp.

No pro-rated refunds will be made for campers who leave early, or choose not to attend the full camp session.

Refund requests can be submitted by e-mail to Camp Registration at [campregistration@girlscoutsla.org](mailto:campregistration@girlscoutsla.org), or by phone, to (626) 677-3600.







## FINANCIAL AID

Financial aid “camperships” are awarded to campers on the basis of financial need only, and are available for all resident, day and specialty camps. Each applicant will be considered for one resident camp and one day camp. Families are asked to provide the maximum dollar amount they can contribute for camp. This amount is based on what a family can afford and must be provided on the campership application for consideration. Camperships vary in amount and may not cover the entire cost of a camp(s). Loans are available for those who have applied for financial assistance, but do not qualify. Applicants will be notified if this is an option. Parents interested in applying for a campership must submit all of the following documents together by

**June 1, 2012**, for consideration:

- Completed “Financial Aid Campership Application” form (2 pages) — *Form is located in the back of this booklet, and in the Forms Library at [www.girlscoutsla.org](http://www.girlscoutsla.org) (KEYWORD: camp).*
- Maximum dollar amount family is able to contribute at time of registration **must** be completed (if unable to contribute any amount, please contact Annie Markowitz, EOA Manager, at [amarkowitz@girlscoutsla.org](mailto:amarkowitz@girlscoutsla.org))
- Completed camp registration form(s)
- Copy of proof of income (2011 tax return or recent pay stub)
- **Incomplete applications will not be accepted**

**The deadline to submit campership applications for all camps is June 1, 2012**, regardless of when the selected camp(s) takes place. All mailed applications must be postmarked on or before June 1, 2012. Registrations may be submitted at any of our seven locations; faxed to (909) 624-7928; or mailed to: GSGLA Montclair Service Center, 9525 Monte Vista Ave., Montclair, CA 91763 C/O Camp Registrar.

Please submit only one application per girl. Awarding rules are the same for every applicant, without regard to race, ethnicity, age, special needs or socioeconomic status, provided all program and membership requirements are met. Campers who are selected to receive a campership will be informed of their award by mail.





# FREQUENTLY ASKED QUESTIONS

## WHO OWNS AND OPERATES THE CAMPS?

Girl Scouts of Greater Los Angeles owns and operates three large resident camps in the Greater Los Angeles Area: Camp Osito Rancho in Big Bear, Camp Lakota in Frazier Park and Camp Skyland Ranch near Idyllwild. GSGLA also operates several unique program sites that host day and core camps (listed on our property highlights page). While many camps are held at GSGLA-owned facilities, GSGLA has partnerships with non-Girl Scout facilities to host specialty camping opportunities created to best meet the varying interests of girls. GSGLA program staff work directly with these partners when offering a camp experience through our organization.

## DO I HAVE TO BE A GIRL SCOUT TO ATTEND CAMP?

If a camper is not currently a Girl Scout, a one-time \$12.00 annual membership fee will be applied in addition to your total camp fees. As a member, girls can participate in an array of council sponsored programs located across the Greater Los Angeles area.

## ARE THERE AGE LIMITS FOR CERTAIN CAMPS?

Yes, and they are dependent on the camping experience being offered. Please check the camp description for grade limitations. **Listed grades refer to the upcoming school year or the grade a camper will be entering.**

## IS FINANCIAL AID AVAILABLE?

Yes, financial aid “camperships” are available for campers whose family’s financial circumstances might otherwise prevent them from attending camp. Interested applicants must submit a “Financial Aid Campership Application” with their camp registration form and proof of income by **June 1, 2012** deadline. *For more details, please see the Financial Aid section on page 5.*

## WILL MY CAMPER NEED A PHYSICAL EXAMINATION TO ATTEND CAMP?

For resident camp, yes. Each camper is required to have a physical examination within 24 months of the starting day of their scheduled camp session. A Health History form is required for all campers and must be completed no more than two months prior to the camper’s session. The form will be included in the camper confirmation packets and is available to download at [www.girlscoutsla.org](http://www.girlscoutsla.org).

## WHAT IF MY CHILD NEEDS MEDICAL OR SPECIAL ATTENTION WHILE AT CAMP?

Resident camp has a qualified professional health supervisor on site, and all camps have First Aid certified adults on site at all times who administer routine health care and any medications. An emergency contact plan is in place should any medical emergencies occur. Parents are notified as soon as possible in the event of any special medical or emergency situation. If your camper has any special needs (physical, behavioral, etc.), every effort will be made to accommodate her special needs. Please include any past or potential concerns on the health history form. The camp director will contact you prior to your daughter’s session.

## CAN SPECIAL FOODS BE PROVIDED?

Most special dietary needs can be met if camp directors are notified in advance. At resident camp, meal options due to medical, religious or other reasons are available. Please indicate these requirements on your camper’s Health History form. Vegetarian alternatives are offered at every meal.

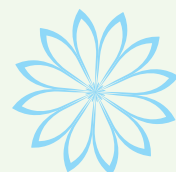
## CAN MY CAMPER BE IN THE SAME UNIT AS HER FRIEND?

While every attempt is made to place girls together, it is not guaranteed. Girls must be the same program level and be registered for the same camp session. *For more details please see the How to Register section on the “Registration” page.*

## WHAT ARE CAMP STAFF LIKE?

Camp staff are enthusiastic, fun, caring, energetic, well trained, and often highly experienced individuals who are hired or appointed for their desire to work with children in a learning environment. For many core camps, volunteers play an important role along with staff. Both hired and volunteer staff are required to complete at least a minimum number of required training hours for their respective roles.

American Camp Association accreditation for resident camp requires training for all resident camp staff on topics including youth supervision, child development, program planning, conflict resolution, First Aid, CPR, and additional certification for specialized program delivery. The resident camp ratio of staff to campers 4th grade and above is 1 to 8, for 2nd - 3rd grade campers it is 1 to 6 with a ratio of 1 to 6 for high-risk programs. The day camp ratio is 1 to 10 and for aquatic activities the ratio is 1 to 8.





# FREQUENTLY ASKED QUESTIONS

7

## WHAT CAMP HEALTH AND SAFETY STANDARDS ARE MAINTAINED?

All GSGLA camps meet the health and safety standards and guidelines established by Girl Scouts of the USA and the State of California. Copies of the California Health Department's inspections are kept on file at the council office.

## WHAT IS A CIT?

Counselors In Training are older Girl Scouts, grades 9–12, who are taking CIT training and work at resident camps as assistant counselors providing advanced outdoor group leadership experience and skill training.

## WHO ARE PROGRAM AIDES?

Program Aides are Girl Scouts, grades 7–12, who are interested in working with younger girls and sharing their knowledge and talents with them while gaining valuable experience under adult supervision. These Girl Scouts have completed the required training hours and have registered for the camp PA programs. They earn community service and leadership hours, satisfying school volunteer and Girl Scout leadership requirements. Program Aide training opportunities can be found at [www.girlscoutsla.org](http://www.girlscoutsla.org).





# RESIDENT CAMP

## CAMP OSITO RANCHO RESIDENT CAMP

Located in Big Bear, this beautiful resident camp property offers girls the opportunity to experience crafts, swimming, archery, sports and games, hiking, a challenge/ropes course, outdoor cooking... and of course nature! Every day is a new adventure and every night the sky offers new chances to wish upon a star... or the constellations! Skill level, weather and group planning determine a girl's ability to participate in certain activities. For more information about any of the resident camp sessions or activities, contact Carolyn Goss, [cgoss@girlscoutsla.org](mailto:cgoss@girlscoutsla.org).

Bus transportation to and from resident camp from several GSGLA service centers is included in the cost of the sessions. Bus locations will be provided at the time of registration.

## SPECIALTY CAMPS

### CAMP INVESTIGATORS

Discover camp high and low as you search for clues to solve the great camp mystery! Become a CSI or Camp Scene Investigator while you learn survival techniques along the way.

### CAMPER SAMPLER

Try a little of this and a little of that... archery, crafts, hiking, ropes course, singing, swimming and so much more! It's a kaleidoscope of camp fun.

### COOL AND CLASSIC

#### Back by Popular Demand!

Meet new friends, sing crazy camp songs, eat wacky themed meals, create fun crafts, explore the outdoors and make memories that will last a lifetime! It's a little bit of everything "camp" and a lot of fun, fun, fun!

### GET RUGGED

Try all that camp has to offer to older girls plus a little more! Begin your high adventure experience on the climbing wall, spend some time under the stars, learn wilderness survival skills, cook outside and of course sing songs and join in at a campfire program.

### HIGH ADVENTURE CAMP

Time for your ultimate camp experience to begin using all the resources that camp has to offer! This is your time to try many different types of high adventure, the sky is literally the limit!

### INDIANA JANE'S DIG

Join us for an archaeological dig with our very own archaeologist "Indiana Jane." Bring the science of archaeology to life by creating a grid, digging and identifying artifacts and learning to work with relics of the past! You will experience camp like never before!

### MIDNIGHT MADNESS

Moon gazing, midnight hikes, discovering the constellations... stay up late to explore what comes out when the sun goes down! Go on a "bed roll overnight" and sleep under the stars. Sleep in and have breakfast late, then take advantage of what the "day" at camp has to offer.

### NATURAL WONDERS OF CAMP

Nature is your best friend, especially when you need its help to survive! What would you use to create a shelter, build a fire without any matches or to find water? Have fun with Mother Nature designing new games, art forms and songs.

### NATURE IN ACTION

Learn how animals can inspire us in art and science to build new forms and inventions. Let your creative juices flow while you explore and view nature's beauty in a whole new way!

### NIGHT OWL

Do you like to stay up late? Twilight hikes, looking at the night sky and checking out the creatures of the dark are all part of this exciting adventure! Spend a night sleeping outside under the stars, wake up late the next morning, and experience the other cool camp activities during the day!

### OUTBACK DIVAS

Want to know what to do if you're lost in the wild? Have fun learning basic wilderness survival skills like making shelters, finding food and water, exploring astronomy and using a compass. Take a one night backpack trip and sing while you walk through the woods.

### PADDLES AND PINECONES

If you like to be around water, and want to navigate a canoe in any condition then this is for you! You will experience night time and daytime canoeing activities and have an extended trip to Big Bear Lake! \*This session also offers a Small Craft Safety Class.

### ROCK STARS!

Climb and repel in a natural and manmade environment using our climbing wall and the rocks of Camp Osito! Enjoy the beautiful trails and scenery of Osito Rancho while learning the skills and techniques for mountain rescues.





## ROPES, ROCKS AND MORE!

Lots of climbing, repelling and belaying on the rocks of Osito and the high ropes challenge course! Learn more advanced techniques of rock climbing and rescues. All of the adventure that camp has to offer is at your fingertips!

## WATER EVERYWHERE!

It's all about staying wet while at camp! Lots of time in the water swimming, on top of the water while canoeing and exploring what lives under and in the water around camp! \*This session offers Jr. Lifeguard and Small Craft Safety classes.

## WATER WISDOM

It's all about the water and staying safe while exploring all sorts of water activities. Earn your American Red Cross Lifeguard certification and a Small Craft Safety Class! Take your new water skills and learn how to apply them to the land while experiencing all the other fun camp has to offer. Have fun in the beautiful mountains while earning impressive certifications for school applications and waterfront job resumes.

## WILDERNESS DIVAS

Wilderness has a lot to offer and can be your best friend if you know what to do! Learn more about building shelters, finding food and water, and finding your way using maps and compasses. Increase your survival skills as you prepare for a 2-night backpack trip and a half-day of canoeing on Big Bear Lake!



## COUNSELORS IN TRAINING PROGRAM (CIT-I AND CIT-II)

Older Girl Scouts interested in working as a camp counselor in the future or who want to expand their leadership skills, are encouraged to participate in CIT-I or II. Shadow counselors, help with younger girl camp programming, gain a better understanding of how resident camps are run and have lots of fun! We have several sessions for you to choose from. CIT-I (Grades 9–10) is offered during sessions 1 & 2, and CIT-II (Grades 11–12) will be offered during sessions 3-5. \*See page 10 for session details.



## CAMP ACCREDITATION

Camp Osito Rancho is accredited by the American Camp Association (ACA). Every three years the camp goes through an accreditation process with on-site visits to evaluate and verify compliance with a set of national standards established by professionals in the camping industry. This is an action we take voluntarily. The standards establish guidelines for needed policies, procedures and practices in the administration of key aspects of camp safety management.

## PROGRAM ADJUSTMENTS

The council and camp directors reserve the right to reassign a camper from one program to another if she does not meet the minimum skill level required for her selected program.

Every effort will be made to help all campers adjust to camp. The Camp Director or Environment & Outdoor Adventure Program Manager will notify parents of changes. The council and camp directors reserve the right to send a camper home should the need arise.

## HORSE CAMPS

The equestrian staff works with campers in group sessions, instruct Western riding, and provide individual attention based on a camper's skill level as a rider. Beginner, intermediate and advanced riders are encouraged to attend; all sessions include horse care, saddling and riding instruction. Riders must wear boots with a ½ inch heel to ensure safety in the stirrups; this is an American Camp Association standard and a Girl Scout requirement.

While much of the time at camp will be focused on horse-related activities, girls will be able to take advantage of the many other activities camp has to offer including: canoeing, archery, ropes course and pool time.

### HOOF PRINTS

This is a perfect introduction to horses! Spend time in the corral brushing, caring and feeding the horses. Saddle up and learn some basic riding techniques too.

### SADDLE UP

Never walk when you can ride! Pack a picnic lunch, explore nature on horseback and leave only hoof prints behind. Spend part of your day grooming and feeding the horses. Learn or improve saddling, bridling, cueing, and of course riding!

### BOOTS AND SADDLES

Take your horse experience to the next level. Learn more about saddling, riding, feeding, grooming and all around horse care. Use all your new skills as you experience trail riding under the stars with an overnight horse pack out!

### HORSE WHISPERS

Neighs, nickers, snorts, tail swishing, and ears back are all part of the language of horses. Learn to listen and observe and become a better rider! In the tack room, arena or on the trails, practice your new ability to understand, communicate with and care for your horse.

### TRAIL BLAZERS

What better way to spend the summer than riding the trails at Osito Rancho on horseback! Horse lovers of all levels learn new skills as they spend their days feeding, grooming and riding these amazing animals!



## RESIDENT CAMPS DATES, TIMES & COSTS

### Session 1: July 10–14 (4 nights)

**Camper Sampler** – Grades 2–3, \$415

**Cool & Classic** – Grades, 4–5 \$415

**Hoof Prints (Horse Program)** Grades, 4–5, \$530

**Get Rugged** – Grades 6–8, \$415

**High Adventure Camp** – Grades 9–12, \$415

**CIT I** – Grades 9–10, \$300

### Session 2: July 17–21 (4 nights)

**Nature in Action** – Grades 2–3, \$415

**Indiana Jane's Dig** – Grades 4–5, \$415

**Saddle Up (Horse Program)** – Grades 4–5, \$530

**Water Everywhere!** – Grades 6–8, \$415

**Water Wisdom** – Grades 9–12, \$415

**CIT I** – Grades 9–10, \$300

### Session 3: July 23–28 (5 nights)

**Night Owl** – Grades 4–5, \$515

**Midnight Madness** – Grades 6–8, \$515

**Paddles and Pinecones** – Grades 9–12, \$515

**Boots and Saddles (Horse Program)** - Grades 9–12, \$630

**CIT II** – Grades 10–12, \$375

### Session 4: July 31–Aug. 4 (4 nights)

**Camp Investigators** – Grades 2–3, \$415

**Natural Wonders of Camp** – Grades 4–5, \$415

**Outback Divas** – Grades 6–8, \$415

**Horse Whispers (Horse Program)** – Grades 6–8, \$530

**Ropes, Rocks and More!** – Grades 9–12, \$415

**CIT II** – Grades 10–12, \$300

### Session 5: Aug. 6–11 (5 nights)

**Camper Sampler** – Grades 2–3, \$515

**Indiana Jane's Dig** – Grades 4–5, \$515

**Trail Blazers (Horse Program)** – Grades 4–8, \$630

**Rock Stars!** – Grades 6–8, \$515

**Wilderness Divas** – Grades 9–12, \$515

**CIT II** – Grades 10–12, \$375





*Celebrate the past, present and future of Girl Scouting*

girl scouts  
1912-2012

**Save the Date**

Annual Meeting & Volunteer Recognition Ceremony

April 14, 2012  
Skirball Cultural Center

# Save the Date

April 14, 2012  
Skirball Cultural Center

Registration Opens February 14, 2012

## Honor a Volunteer

**Congratulate an awardee or extraordinary volunteer, and/or promote your organization with a tribute ad in the 2012 Volunteer Recognition Ceremony Program Book!**

The program book represents a wonderful opportunity to not only show GSGLA Adult Volunteers how much they are appreciated, but also to showcase your organization to the thousands of individuals who serve and support GSGLA.



# DAY CAMPS

## CAMP EL RANCHITO

El Ranchito in Long Beach offers an exciting adventure every week! At this beautiful tree-filled, park-like day camp, girls are grouped by grade level in shaded units. Girls will explore traditional Girl Scout activities such as games, crafts, interacting with nature and making new friends. All day camps include daily snacks, Friday lunch, a camp T-shirt or bag, a camp patch, and a 4x6-inch group picture. For more information please contact Abigail Kinnahan, [akinnahan@girlscoutsla.org](mailto:akinnahan@girlscoutsla.org).

**\*New Camp Hours\*:** We have added an extra hour of fun to each day of camp! New camp hours are from 9 a.m. to 4 p.m.

**Extended Care:** Before and After Care is available from 7 a.m. to 9 a.m. and 4 p.m. to 6 p.m. for \$50/week. If only a.m. or only p.m. care is needed, the cost is \$25/week. Note: **A \$10 late fee will be charged every 15 minutes after 6 p.m.**

**Summer Program Aides:** Girls must have completed Program Aide Training. Camp Training is required prior to the first summer session. PAs are assigned to units and work closely with counselors and campers. For more information and to register as a Summer Program Aide, please contact Abigail Kinnahan, [akinnahan@girlscoutsla.org](mailto:akinnahan@girlscoutsla.org) or (626) 677-2300.

### ARTRAGEOUS

**June 18–22**

Grades K–3, \$135

Grades 4–6, \$155

Creativity can be messy! Grab your play clothes and get ready for five days of artistic fun! Create your own works of art as you explore various art styles and mediums. Discover your artistic flair as you paint, draw, sculpt, tie-dye, make jewelry and more. Friday will have a gallery showing of the girls' work. An artrageous time is waiting for you! Girls 4th grade and up will have an off-site field trip to inspire their creativity.

### FROM SCREEN TO STAGE

**June 25–29**

Grades K–3, \$135

Grades 4–6, \$155

It's time for our stars of tomorrow to shine today! Join us as we bring songs from the silver screen to the stage – performed entirely by our girls. Girls will spend the week singing their little hearts out, moving those dancing feet, and projecting to the back row. The week will be spent on all aspects of the production – singing, dancing, acting, creating costumes, props and sets, and helping run the show. Family members are invited to see their girls perform on the last day of camp in the big show!

\*Performance will be Friday, June 29th at 5 p.m. As an added bonus, the 4th through 6th graders will have their own dinner and dance party on Wednesday.



### RED, WHITE & BLUE: A 4TH OF JULY CELEBRATION (2-day camp)

**July 2–3**

Grades K–6, \$55

Join us for our celebration of America's Independence! Yankee Doodle Dandy your way through this patriotic camp. Create mock fireworks, your own star spangled banner, and join together with your Girl Scout sisters to honor America the Beautiful.

### WET 'N WILD (2-day camp)

**July 5–6**

Grades K–6, \$55

This camp has never been cooler! Come splash around with friends, play water games, participate in relay races and toss water balloons. Campers will also be making cool frosty treats and awesome water crafts, so pack a swim suit, a pair of water shoes and your favorite towel and get ready for some summer fun.

### ISLAND TO ISLAND

**July 9–13**

Grades K–3, \$135

Grades 4–6, \$155

Phileas Fogg made it around the world in 80 days; we can do it in 5! Join us on this exceptional adventure as we navigate from island to island. Explore the local games and cultural traditions of numerous countries through song, dance, storytelling and food. Discover the different animals and native wildlife. There are so many islands to explore: Hawaii, the Caribbean, even Australia! Quick! Jump aboard before we cast off for this trip! Girls entering 4th grade and up will explore marine life while on a very special field trip to the Aquarium!

### LIONS, CROCODILES AND BUGS, OH MY!

**July 16–20**

Grades K–3, \$135

Grades 4–6, \$155

Dive into the wild world of all that creeps and crawls, roars and snores. From the furry to the slimy, the tiny to the gigantic, we'll explore it all. Be prepared to do a little digging to uncover some cool facts about the creatures that roam the world around us. You'll also get your chance to get up close and personal with some of these cool creatures when a special guest comes for a visit. An offsite adventure awaits girls in grades 4–6.

### BLAST FROM THE PAST

**July 23–27**

Grades K–3, \$135

Grades 4–6, \$155

Join us as we travel through the decades. Go back in time to the 50's, 60's, 70's and 80's. Get ready for a sock-hop, channel your inner flower child, dance at the disco and tease up that hair. We'll be rocking though 40 years of pop culture in 5 days! On Friday, the girls will create and participate in their own "Fabulous Fads" fashion show. Girls entering 4th grade and up will go offsite for a special roller skating party.





## LITTLE CAMP ON THE PRAIRIE

July 30–Aug. 3

Grades K–3, \$135

Grades 4–6, \$155

Go back in time to when author Laura Ingalls Wilder was a young girl living on the prairie. Experience pioneer life and the old west. Sewing and candle making are just a few of the creative activities. Play games like stick ball, hopscotch and sack races. Make butter and fresh-squeezed lemonade. The week will end with a country fair. Girls entering 4th grade and up will enjoy a sleepover on Thursday.



## INVESTIGATION: MYSTERY AT EL RANCHITO

Aug. 6–10

Grades K–3, \$135

Grades 4–6, \$155

The Mystery at El Ranchito needs to be unraveled! Come help us crack the case using your investigative skills! Gather the evidence, interrogate the suspects, and collect the clues you will need to get to the bottom of the crime and catch the culprit! Girls entering 4th grade and up will enjoy a sleepover on Thursday.





# DAY CAMPS

## MARINE LANDING

Every day is a beach at Marine Landing in Long Beach! Each week girls will develop boating skills, participate in marine activities, and swim and play on the beach. All day camps include: daily snacks, lunch on Friday, a camp T-shirt, a camp patch and a 4x6-inch group picture. For more information please contact Lisa Axelrod, [laxelrod@girlscoutsla.org](mailto:laxelrod@girlscoutsla.org).

**\*New Camp Hours\*:** We have added an extra hour of fun to each day of camp! Our new camp hours are from 9 a.m. to 4 p.m. (except Smooth Sailing, Advanced Boating.)

**Extended Care:** Before and After Care is available from 7 a.m. to 9 a.m. and 4 p.m. to 6 p.m. for \$50/week. If only a.m. or only p.m. care is needed, the cost is \$25/week. **Note: A \$10 late fee will be charged every 15 minutes after 6 p.m.**

**Summer Program Aides:** Girls must have completed Program Aide Training. Camp Training is required prior to the first summer session. PAs are assigned to units and work closely with counselors and campers. For more information and to register as a Summer Program Aide, please contact Abigail Kinnahan, [akinnahan@girlscoutsla.org](mailto:akinnahan@girlscoutsla.org) or (626) 677-2300.

**Swimming Evaluation:** A swim evaluation is given to all girls on the first day of camp. All swimming levels may participate in all camp programs. Life vests are mandatory while boating and are available during swimming.

**Program Changes:** Occasionally, we must change the camp program with little or no notice. During beach closures, we provide additional crafts, water games and special activities.

### Marine Landing Open House:

Come visit Marine Landing and meet all of our great summer staff. All family members are welcome to enjoy a picnic dinner and those 5 and up can get in some kayaking time as well. Parents please make sure that anyone going in the boats has closed toe shoes and clothes that can get wet. **\*\*Note:** You don't have to have a camper attending that week to come to the open house. Anyone attending a Marine Landing camp over the summer is welcome to come.

~~June 26~~<sup>28</sup>, 4:30 p.m. to 6:30 p.m.  
~~July 28~~<sup>26</sup>, 4:30 p.m. to 6:30 p.m.

**Please note: the original Camp Guide had misprinted dates for the Open House. Correct dates are June 28 and July 26 from 4:30 pm to 6:30 pm.**

## MARINE LANDING BEFORE TIME

**June 18–22**

Grades 1–3, \$165

Travel back into time when dinosaurs roamed Marine Landing. Follow dinosaur footsteps to fun in the sand and kayak through pre-historic waters. Look out for T-Rex!

## DINOSAUR DIVAS

**June 18–22**

Grades 4–7, \$185

Become a junior archeologist and excavate dinosaur bones from prehistoric days. Kayak through the Jurassic period and discover a lost world. Create fun art and crafts while learning about ancient animals and a few that still exist today! An overnight on Thursday keeps the fun going.

## INTO THE WILD

**June 25–29**

Grades 1–3, \$165

Come on down to the Marine Landing waters and discover an exotic environment while learning about animals from the rainforest, jungle and safari.

Bring out the wild in you by becoming your favorite animal on Thursday. You will also kayak your way through the imaginary Amazon River and enjoy the sun and sand at our own private beach!

## WET AND WILD

**June 25–29**

Grades 4–7, \$185

Slip and slide through the summer at Marine Landing! Enjoy a week of swimming, kayaking and a field trip to the La Mirada Water Park on Thursday! Splish-splash with old and new friends!!

## FOOTPRINTS IN THE SAND

**Session 1 July 2–3** Grades 1–7, \$65

**Session 2 July 5–6** Grades 1–7, \$65

Join our beach-going-staff as we explore the beach and what it has to offer us! Two great days of exploring sand in new ways: sand art, sand sculpture contest, and sand crafts, just to name a few. Don't worry if you want to do both sessions, we'll change it up to make each session new and exciting.

**This is a Non-Boating session!**

## UNDER THE SEA

**July 9–13**

Grades 1–3, \$165

Join your fellow mermaids in an underwater adventure and become a junior marine biologist while exploring everything under the sea! Discover our marine world by land (at the beach) and by sea (while kayaking).

## SCUBA-DUBA SWEETIES

**July 9–13**

Grades 4–7, \$185

From sea kelp to sea stars, observing aquaculture is fascinating! See the world through the lens of a marine biologist by land (at the beach)... and by sea (while kayaking). At week's end, "sea" for yourself how amazing marine life can be while on a very special field trip to the Aquarium!





## DIVE INTO THE DECADES

**July 16–20**

Grades 1–7, \$165

Join us for a blast from the past as we travel through the 50's, 60's, 70's and 80's. Sport your decade appropriate clothing down the Marine Landing runway in a fabulous fashion show! No decade day would be complete without kayaking instruction and free swim time at the beach. Get groovy with Marine Landing at our very own beach hop!

## SMOOTH SAILING – ADVANCED BOATING

**Session 1 July 16–20** Grades 5–8, \$185

**Session 2 July 30–Aug. 3** Grades 5–8, \$185

Join us for a week of advanced boating! Sailing camp is back and new and improved! Learn how to tie sailing knots, assemble a sabot and finally sail the seas of the Marine Landing waters! Camp Hours: 11 a.m. to 6 p.m. Extended Care not available. Prerequisite: Must have attended a Marine Landing Day Camp within the last 3 years. No Program Aides needed.

## EARTH ANGELS

**July 23–27**

Grades 1–3, \$165

Embrace the beauty of nature and learn how to save animals all over the world. Learn how to be eco-friendly and caring for the environment through creative crafts. Play in the bay, kayak, and have plenty of fun while saving the earth!

## JR. LIFESAVERS, ADVANCED BOATING

**July 23–27**

Grades 4–8, \$185

Girl overboard!!! Find out how to throw out the life preserver and be prepared to handle emergency situations! You'll learn about CPR and water rescue. You'll also be able to reap the rewards of learning these important skills by kayaking and relaxing on the beach. An overnight on Thursday night adds to the fun! Prerequisite: Must have attended a Marine Landing Day Camp within the last 3 years.

## IT'S A PIRATE'S LIFE

**July 30–Aug. 3**

Grades 1–7, \$165

Aye-aye, Captain! Follow the treasure map to Marine Landing! Join us for some swash buckling adventures on the high

seas, test your sea legs aboard our trusty kayaks, find the buried treasure on the beach, be ready to walk to plank! Live the life...a pirate's life that is!

## YOUR ROYAL HIGHNESS

**Aug. 6–10**

Grades 1–3, \$165

Grab your beach wear (don't forget your tiara) and join your fellow rulers on the sovereign sands of Marine Landing! It's a week of fairy tale fun and exciting adventures while kayaking with the royal fleet and frolicking with your regal friends in the sands of Marine Landing.

## SURF N' TURF

**Aug. 6–10**

Grades 4–8, \$185

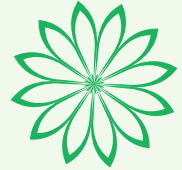
Enjoy boating and the beach while working up an appetite for time in the kitchen during this week of food, fun and sun. Become the next top chef while learning new cooking skills, creating special dishes, and discovering the importance of healthy living and good nutrition. A special visitor and an overnight are offered for more culinary fun!! Program Aides in high school are needed.

## AQUA NUTS

**Aug. 13–17**

Grades 1–7, \$165

End the summer with a bang! Go nuts at the beach while swimming, kayaking and building sand castles. Enjoy various crafts to show off at the beginning of the school year! No formal kayaking instruction provided. Program Aides in high school are needed.





# DAY CAMPS

## CAMP MARIPOSA

Camp Mariposa (located in Altadena) sessions have a different theme and emphasis each week. Girls participate in new and traditional Girl Scouts activities while making new friends, developing self-esteem and making lasting memories. Cookout lunch once a week, as well as one afternoon of water play. All day camps include daily snacks, a T-shirt and a 4x6 camp group photo. Camp hours are from 9 a.m. to 4 p.m. All sessions serve grades 1–5. For more information please contact Terese Miller, [tmiller@girlscoutsla.org](mailto:tmiller@girlscoutsla.org).

**Extended Care:** Before and After Care is available from 7 a.m. to 9 a.m. and 4 p.m. to 6 p.m. for \$50/week. If only a.m. or only p.m. care is needed, the cost is \$25/week. **Note: A \$10 late fee will be charged every 15 minutes after 6 p.m.**

**Summer Program Aides:** Girls must have completed Program Aide Core and Camp Mariposa Specialty Training prior to the first summer session. PAs are assigned to units and work closely with counselors and campers. For application, please contact Terese Miller at [tmiller@girlscoutsla.org](mailto:tmiller@girlscoutsla.org).

### BUDDIES N' PALS

**June 11–15**

Grades 1–5, \$150

“You and me we’re gonna be partners, buddies and pals”, a favorite Girl Scout song, but also important to Girl Scout friendships everywhere. In celebration of our 100th year, learn how to be a great friend, share favorite activities, and show friends you care the Girl Scout way! Brownie Girl Scouts will earn the Making Friends Badge and Junior Girl Scouts will earn the Girl Scout Ways Legacy Badge.

### MAD SCIENTISTS

**June 18–22**

Grades 1–5, \$150

Step into the world of science as girls discover what bio-mimicry means and how to be a product designer. Girls will discover how to be a forensic detective and will make their own amusement park! All girls will work on “being green” while Brownie Scientists will earn the Household Elf Badge and the Juniors will earn the Product Design and Detective Badges.

### KIDS AT ART!

**June 25–29**

Grades 1–5, \$150

Be an artiste for the week at Camp Mariposa. This week, the Brownie Girl Scouts will concentrate on painting and will make a mural, paint a mood and earn the Painting Badge. Junior artists will experiment with different art materials as they learn about perspective and shading and earn the Drawing Badge.

### LET’S PLAY!

**July 2–6 (No camp on July 4)**

Grades 1–5, \$120 pro-rated

A week of fun and games! Learn games from different countries, make up a scavenger hunt and play a mystery game. Design a maze and your own crossword puzzle. The Making Games badge will be earned by the Brownies while the Junior Girl Scouts will earn the Puzzler Badge.

### MERRY OLE MARIPOSA

**July 9–13**

Grades 1–5, \$150

Jump into the Time Machine and come to the castle at Camp Mariposa to explore life in medieval times. Make your own castle and moat, design your own stained glass window, find out about feasts, magicians and jugglers! Girls will celebrate with a Faire Day on Friday! Girls will earn the Medieval Merriment Badge from Girl Scouts of Maine.

### OVER THE OCEAN BLUE

**July 16–20**

Grades 1–5, \$150

Discover the lure of the ocean as girls explore the world beneath the waves. Girls will find out about their favorite ocean creatures, make their own jelly fish and build a shoebox reef and kelp forest. Our special guests will be the Cabrillo Marine Aquarium Ocean Outreach! Girls will earn the GSGLA Marine Mammal Badge.

### NORTHERN LIGHTS!

**July 23–27**

Grades 1–5, \$150

Explore our 49th state as we learn about Alaska! Make a totem pole and an Alaskan yo-yo. Learn about the Northern Lights, and find out about the Iditarod.

Our special treat will be a dog sled demonstration!! Brownie explorers will earn Alaska My Home Badge and Junior Girl Scouts will earn the Northern Lights Badge from Girl Scouts of Alaska.

### OLYMPIAD 2012

**July 30–Aug. 3**

Grades 1–5, \$150

Run faster, jump higher, play fair! That is the spirit of the Olympic Games. Learn some different sports and hone your skills on sports you already know. Camp Mariposa Olympics will take place on Friday!! Junior Girl Scouts will earn the Practice With A Purpose Badge and Brownies will earn the Fair Play Badge.

### FIESTA!

**Aug. 6–10**

Grades 1–5, \$150

Ole! Celebrate our Latin American culture and heritage! Learn about our Girl Scout World Center, Our Cabana, in Cuernavaca Mexico. Make a piñata (and break it!), a God’s Eye and try your hand at Papel Picado. Eat some special Latin American tasty treats!! Girls will earn the Hispanic Heritage Patch from Girl Scouts–Arizona Cactus Pine Council.

### THE YELLOW BRICK ROAD

**Aug. 13–17**

Grades 1–5, \$150

Follow the Yellow Brick Road and the adventures of Dorothy, Toto, the Lion, the Tin Man and the Scarecrow! Learn about L. Frank Baum, build a life-size scarecrow, learn about tornadoes, and find out about the gemstones of Oz – from rubies to emeralds. Make your own map of Oz and design a yellow brick road to your favorite place. What gift would you ask the Wizard for?





## CAMP MONTROSE - CADETTE DAY CAMP

GSGLA is excited to offer, at the Montrose Program Center, day camps designed just for Cadette Girl Scouts, grades 6–8! Girls will have fun, meet new friends and imagine their own futures, sew some clothing, make their own movies and experience some new art! All day camps include daily snacks, T-shirt, and a 4x6-inch group picture. Camp hours are from 9 a.m. to 4 p.m. For more information, please contact Kristen Simon, [ksimon@girlscoutsla.org](mailto:ksimon@girlscoutsla.org).

**Extended Care:** Will not be offered for these sessions.

**Summer Program Aides:** Will not be used for these sessions.

### ART ATTACK

July 9–13

Grades 6–8, \$225

Have an attack of the arts! Join other Cadette Girl Scouts and try your hand at a different art experience every day! Art will include African Folklore Embroidery, comic book illustration, jewelry making and two more days of art surprises! Become the most creative YOU ever!

### FUTURE WORLD!

July 16–20

Grades 6–8, \$225

Participate in activities that will inspire your passion for creating ways to build a better future for the coming generations! Emblazon a path that others will follow that involve using the earth's resources while treasuring them as well. This week-long session teaches girls to build a green model home from everyday materials, tap into their design sense by becoming a product designer, and explore other fun activities such as building their own "operation" game and designing their own amusement park!



## CAMP COVINA

This camp is located in Hollenbeck Park in Covina. This is a great environment for girls to get a taste of camp and add to their Girl Scout memories. Girls are grouped according to age level and assigned to small units for individual activities. Camp will include daily snacks and a camp patch. Girls will need to bring a sack lunch and a reusable water bottle each day. Camp hours are from 9 a.m. to 4 p.m. unless otherwise indicated. For more information, please contact Teresa Heston-Rojas, [theston@girlscoutsla.org](mailto:theston@girlscoutsla.org).

**Extended Care:** Will not be offered for this session.

**Summer Program Aides:** Girls must have completed Program Aide Core training prior to the camp session. PAs are assigned to units and work closely with volunteers, staff and campers. For more information regarding PA's and volunteering at camp, please contact Teresa Heston-Rojas, [theston@girlscoutsla.org](mailto:theston@girlscoutsla.org) or (626) 677-2286.

### CAMPER'S DELIGHT

July 9–13

Grades K–5, \$120

Come try the best of what day camp has to offer. Take part in singing songs, playing group games, cooking and crafting. Come demonstrate your team-building skills in an outdoor and fun environment. Camp is a great way to

meet new friends and try new things too. Each level will work on activities or badges from the new Girls Guide to Girl Scouting. Create your own summer adventure and bring a friend along to share it with you!

### LET'S GET REEL!

July 23–27

Grades 6–8, \$225

Something for everyone is included in this week-long program for movie lovers. Professionals step in to teach sessions on writing, directing, storyboarding, acting and post-production! By the end of the week girls will be showing their own short film, all while having learned about different aspects of the movie industry! Classic movies with positive female leads will be shown and discussed to round out this can't-be-missed opportunity.

### DOMESTIC DIVAS

July 30–Aug. 3

Grades 6–8, \$225

This is a week for girls to learn some useful skills that can be helpful when running a home. Ever wish you could make your own fashionable clothes or dream of being an amazing cook that all your friends and family brag about? During this time together, girls will learn to be more proficient in the kitchen by making some yummy new tasty treats as well as some simple basics. Girls will also learn how to sew with a sewing machine and also try their hands at knitting, embroidery or crocheting. To end the week, girls will present a fashion show, complete with goodies!!



## HORSEBACK RIDING

GSGLA offers horseback riding specialty day camps through collaborations with stables in Altadena, Atwater Village, near Griffith Park and Leona Valley. For more information, please contact Terese Miller, [tmiller@girlscoutsla.org](mailto:tmiller@girlscoutsla.org).

**Extended Care:** Will not be offered for this session.

**Summer Program Aides:** Will not be used for these sessions.

### EQUESTRIAN I & II

**June 25–29**

Grades 4–12, \$400 (Equestrian I)

**July 30–Aug. 3**

Grades 4–12, \$400 (Equestrian II)

Held at Altadena Stables, this Equestrian program is designed for beginner through advanced riders with an emphasis on foundational riding skills, correct form and safety. Girls have the opportunity to care for one of the Altadena Stables' horses for the week, building girls' confidence and developing a better understanding of horse behavior.



### COWGIRLS ROCK I & II

**July 9–13**

Grades 4–12, \$400 (Cowgirls Rock I)

**July 23–27**

Grades 4–12, \$400 (Cowgirls Rock II)  
Held at Leona Valley Riding Center near Palmdale, this program offers girls a chance to become familiar with the needs of a horse and the responsibilities of a rider in an upbeat and fun environment with fellow girls. Girls spend two hours a day in the saddle minimum and learn all about the horses feeding and nutrition needs. They learn basic ground work, grooming and the anatomy of the horse, as well as how to read a horse's temperament and how to oversee their wellbeing. Games on horseback are held and this is an activity rich week!

### RIDE ON I & II

**July 16–20**

Grades 4–12, \$400 (Ride On I)

**Aug. 13–17**

Grades 4–12, \$400 (Ride On II)  
Enterprise Farms, located in Atwater Village near Griffith Park, offers a fun-filled day camp program teaching both horseback riding for all levels and the care of horses. Safety oriented instructors help girls develop basic horsemanship skills such as grooming, bathing and working safely around horses. Girls also have the opportunity to work with the rare Caspian Horse! Activities include riding, horsemanship skills, games and arts and crafts. At week's end, girls show off newly learned riding skills for their families!

## CENTRAL COAST EXPLORATION CAMP – TROOPS ONLY

**June 21–25**

Grades 6–12, \$190 per person

Come explore the amazing and beautiful Central Coast with camping in Morro Bay, kayaking, touring Hearst Castle, viewing an Elephant Seal colony, hiking, and swimming at the beach. Explore San Luis Obispo including the Mission, historic downtown and Chinatown areas and a lot more. We will be tent camping at Morro Bay State Park and exploring the entire Central Coast by vehicles. A fun and exciting break from the heat of Southern California. For more information, please contact Jennifer Odum, [jodum@girlscoutsla.org](mailto:jodum@girlscoutsla.org).

*Camp price includes 11 meals, camping fees, entrance to all attractions and kayaking fees. Troop leaders are responsible for their transportation to camp and will use their own vehicles for the exploring we do around the Central Coast.*



## HIGH SIERRA CAMP – GIRLS ONLY

**June 25–29** Grades 6–12, \$350

**July 23–27** Grades 6–12, \$350

Camp under the stars, high up in the Sierra Nevada Mountains at Mono Lake, near Yosemite. Participate in Tufa Walks, Canoe Tours, Crater Hikes, Star Talks and a "Top of the Mountain Peak" bagging experience! Girls also enjoy exploring sites such as the famous Alabama Hills, Fossil Falls, Charcoal Kilns and the Manzanar Relocation Center. **Activities at high elevation require good physical and respiratory health and prior hiking experience.** For more information, please contact Terese Miller, [tmiller@girlscoutsla.org](mailto:tmiller@girlscoutsla.org).

## 100 YEARS OF GIRL SCOUT COOKING

**June 26–28**

Grades 2–5, \$110

Celebrate Girl Scouts' 100th Anniversary with traditional cooking methods and recipes. Girls will explore using alternative cooking methods, like the Box Oven, the Dutch Oven and Solar Cooking. Girls will prepare and eat their dinner each night. Girls will earn their First Aid badges with help from special guests including the Sheriff Department, Fire Department and Lifeguards. Swimming on Thursday (lifeguards provided). Brownies will earn their Snacks and Brownie First Aid badges. Juniors will earn their Simple Meals and Junior First Aid badges. Girls receive a patch, T-shirt and group photo. For more information, please contact Robyn Ewing, [rewing@girlscoutsla.org](mailto:rewing@girlscoutsla.org).



# SPECIALTY DAY & OVERNIGHT CAMPS (girls & troops)

19

## NATURE ROCKS NANCY DREW STYLE

July 9–13

Grades 2–5, \$110

Follow the clues to solve “The Mystery of the Golden Oak”. Go on a search for real-life hidden treasure. Spend the week learning about nature in a fun and creative way. Girls will have a special visit from Placerita Nature Center’s resident animals. Enjoy songs, fun and friendship. Brownies will earn their Letterboxer and Hiker badges. Juniors will earn their Geocacher and Detective badges. Girls must bring sack dinner and beverage each night. Girls will receive a patch, T-shirt and group photo. For more information please contact Robyn Ewing, [rewing@girlscoutsla.org](mailto:rewing@girlscoutsla.org).

## ISLAND OF THE BLUE DOLPHINS – GIRLS ONLY

July 12–14 Grades 7–12, \$275

July 26–28 Grades 7–12, \$275

Explore the Channel Islands by kayak, snorkel & fins, and hiking boots! Explore sea caves and kelp forests, learn about the history and geology of the Channel Islands and hike, swim, and relax in the sun. Camp out in tents under the stars at the historic Scorpion Ranch on Santa Cruz Island. This is a girl-only trip. Ability to swim face down in deep water required. Excursion departs from/returns to Ventura Harbor.

Fee includes round-trip boat transportation, campsite, kayaks/gear and lessons, snorkeling equipment, six meals and snacks and knowledgeable guides on the island. For more information, please contact Jennifer Odum, [jodum@girlscoutsla.org](mailto:jodum@girlscoutsla.org).

## FOREVER GREEN AT SKYLAND RANCH – GIRLS ONLY

July 16–20

Grades 4–10, \$225

Let’s celebrate 100 years of Girl Scouting! This very special camp will explore Girl Scouting throughout the years. Ever wonder what Girl Scouts did 25, 50 or 100 years ago? Join us for this extraordinary 100 year party.

Experience the magic of Skyland Ranch in the San Jacinto Mountains, near Idyllwild. Campers choose to sleep in cabins or open-air shelters. Included in the cost of this camping opportunity are meals, snacks, archery, hiking, arts and crafts, nature activities and bus transportation. This is a volunteer run camp, and volunteers are needed. For

more information, please contact Carissa Dragan, [cdragan@girlscoutsla.org](mailto:cdragan@girlscoutsla.org).

Bus transportation to/from the Long Beach Service Center departs 8 a.m. on July 16 and returns 5 p.m. on July 20.

## PROGRAM AIDES (FOREVER GREEN AT SKYLAND RANCH)

July 15–20

Grades 10–12, \$150

Put your leadership skills into practice while helping volunteer counselors. PAs are assigned to cabins or outdoor units and participate in some camper activities. Transportation is not provided. For more information, please contact Carissa Dragan, [cdragan@girlscoutsla.org](mailto:cdragan@girlscoutsla.org).

## CLIMB HIGH, SWING LOW GIRLS OR TROOPS

July 27–29

Grades 6–12 \$65 (girls & adults)

Do you love to find adventure in high places? Then come spend a day navigating the high ropes challenge course and riding the zip line during a weekend at the relaxing Canyon RV Park in Anaheim. Also spend some time tent camping, swimming, preparing self-made meals (food provided except for Friday night) and spending time hanging out with your friends. This weekend makes an awesome adventure for older girls! Price includes: site, challenge course, food and staff.

Camp begins at 5 p.m. Friday; ends at 11 a.m. Sunday. For more information, please contact Marcia Pierce, [mpierce@girlscoutsla.org](mailto:mpierce@girlscoutsla.org).

## TALL SHIP ADVENTURE – GIRLS OR TROOPS

Aug. 2–4

Grades 6–12, \$325 (girls and adults)

You are the crew for three days and two nights on a 100 foot Brigantine Tall Ship sailing the high seas and learning first hand the art of navigating a sailing vessel! Spend days with the wind in your face while learning the ropes by climbing the rigging to furl & unfurl the sails up the main mast or out on the bowsprit. You will have a chance at the helm, be the bow watch, learn navigating and charting, cook in the galley and as every sailor knows, there is always time for singing, relaxing, and learning very special knots! This high adventure activity is provided by highly experienced

mariners of the LA Maritime Institute. Fee includes the ship, crew, food, sleeping accommodations and lots of sailing instructions while out at sea. Ship departs from Ports ‘O Call, in San Pedro. For more information please contact Teresa Heston-Rojas, [theston@girlscoutsla.org](mailto:theston@girlscoutsla.org).

## OCEAN FUN ON CATALINA – GIRLS OR TROOPS

Sept. 7–9

Grades 4–12, \$175 (girls and adults)

Grades 7–12, \$85 Program Aides

Join us for a fun-packed weekend on Catalina Island filled with swimming, kayaking, tidepooling, snorkeling and a campfire program. Troops can plan an additional program to include: sports, hiking and beachcombing. The cost includes: round trip boat ride from Long Beach, waterfront program and materials, staff, sleeping/bathing accommodations and meals.

This is a troop event but independent Juliettes are welcome. Girl/adult ratio is in accordance with Safety Wise. The boat leaves from Catalina Classic Cruises in Long Beach. The camp is based out of Howland’s Landing on Catalina Island near Two Harbors. Troops must use our transportation. Special arrangements cannot be made. A troop roster of all attending is required.

Boat departs at 6 p.m. Friday from Catalina Classic Cruise Terminal, Long Beach (bow of the Queen Mary) and returns at 1:30 p.m., Sunday. Cost includes round trip boat transportation to/from island, waterfront program, accommodations and all meals. For more information please contact Carolyn Goss, [cgoss@girlscoutsla.org](mailto:cgoss@girlscoutsla.org).





# SPECIALTY OVERNIGHT CAMPS (troops & families)

## CAMP SURF – TROOPS ONLY

**June 22–24** Grades 4–12, \$125 (girls and adults)

**July 27–29** Grades 4–12, \$125 (girls and adults)

Surf all day and sleep under the stars at night! Troops tent camp at Imperial Beach (near San Diego) and enjoy surf lessons, archery, a climbing tower, body boarding, or simply relaxing on the beach. Grab your sunscreen, wax your board and catch the waves! Ability to swim face down in deep water is required.

Arrive at 4 p.m. on the first day of the session; Depart 12 noon on final day. Fee includes camping, all activities, four meals and surf instruction. Transportation not provided. For more information, please contact Robyn Ewing at [rewing@girlscoutsla.org](mailto:rewing@girlscoutsla.org).

## CLIMB HIGH, SWING LOW – FAMILIES

**Aug. 24–26**

All Age Levels, \$65 (girls and family members)

Program Aides, Grades 6–12, \$30

Interested in a family adventure you will never forget? Come spend a weekend navigating the low ropes challenge course, riding the zip line, camping and swimming at the relaxing Canyon RV Park in Anaheim! Children ages 5 and older can participate in the ropes course activities. Program Aides are welcome and can help with younger girl program activities.

Camp begins at 5 p.m. Friday; ends at 11 a.m. Sunday. Fee includes: camp site, grass top ropes course and other programs, staff, and meals for all day Saturday and Sunday breakfast. Friday dinner is self-provided. One adult from each family is asked to help with meal preparations. Families need to bring their own tents. For more information, please contact Marcia Pierce, [mpierce@girlscoutsla.org](mailto:mpierce@girlscoutsla.org).

## CAMP OSITO RANCHO – FAMILIES

**Aug. 17–19**

All Age Levels, \$160

Enjoy the magic of Osito Rancho at Big Bear Lake for your next Girl Scout family vacation! Platform tent camping and a variety of activities including swimming, archery, canoeing, craft creations and sharing camp songs help make this one of the most memorable times you'll ever have as a family.

Arrivals are between 2 p.m. and 5 p.m. Friday; departures by 2 p.m. Sunday. The price includes: program, food, lodging and staff. For more information, please contact Carolyn Goss, [cgoss@girlscoutsla.org](mailto:cgoss@girlscoutsla.org).





**CAMPER INFORMATION: (please type or print)**

Camper First and Last Name		Nickname (if applicable)	
Address	City	State	Zip Code
Phone	Email (please be sure to provide an email you actively use)		
Age	DOB (MM/DD/YYYY)	Current Grade	Troop
Girl Scout Council (if not GSGLA)			
How did you hear about camp? <input type="checkbox"/> Friend <input type="checkbox"/> Troop Leader <input type="checkbox"/> Previous camper <input type="checkbox"/> Camp brochure <input type="checkbox"/> Website/e-Newsletter			
Optional: Name <u>ONE</u> girl your camper would like to be grouped with. Both campers must request each other and forms should be submitted together. Requests are not guaranteed.			Phone

**PARENT/GUARDIAN INFORMATION:**

(1) Parent/ Guardian Name		Home Phone	Cell Phone
Address	City	State	Zip Code
(2) Parent/Guardian Name		Home Phone	Cell Phone
Address (if different)	City	State	Zip Code

**EMERGENCY CONTACT:**

Emergency Contact Name	Phone	Relationship to Camper
------------------------	-------	------------------------

**CAMP OSITO-RANCHO SESSION SELECTION:**

Session Number	Camp Title	Date of Camp	Camp Fee	Subtotal
1				
2				
			Add one-time \$12.00 fee if <b>NOT</b> a Girl Scout	\$
			<b>TOTAL</b>	\$

**✓ BUS DROP-OFF/PICK-UP LOCATION (Check one):**

Camp fees include bus transportation to and from Camp Osito-Rancho. Please select the most convenient drop-off/pick-up location.

**1**

☐ **Arcadia Service Center**  
101 E Wheeler Ave  
Arcadia, CA 91006

**2**

☐ **Long Beach Service Center**  
4040 N Bellflower Blvd  
Long Beach, CA 90808

**3**

☐ **Woodland Hills Service Center**  
20931 Burbank Blvd, Ste A  
Woodland Hills, CA 91367

**PERMISSION:**

As legal guardian, I give permission for the above girl to attend camp and participate in all activities, for her to be transported out of camp during the camp session for programs and other purposes, and for emergency treatment to be given to her in case of injury or illness, unless otherwise stated. I understand that if she is not currently a registered Girl Scout, an additional one-time \$12.00 membership fee will be applied to the overall cost of camp.

List Exceptions to Participation (if any)

X

Parent/Guardian Signature \_\_\_\_\_ Date \_\_\_\_\_

☐ Check here if you **DO NOT** authorize GSGLA to use images of camper for promotion of Girl Scouts.

✓ **PAYMENT (Check one):** ☐ \$95.00 DEPOSIT (PER SESSION) or ☐ TOTAL AMOUNT

**✓ PAYMENT METHOD (Check one):**

- ☐ Camper has applied for financial aid before **June 1, 2012** deadline —application and proof of income are attached
- ☐ GSGLA giftcard
- ☐ Check # \_\_\_\_\_ (payable to Girl Scouts of Greater Los Angeles) is attached
- ☐ Charge to credit card. ☐ Visa ☐ MasterCard ☐ AmEx ☐ Discover

Cardholder Name \_\_\_\_\_ credit card/giftcard # \_\_\_\_\_ Exp Date \_\_\_\_\_ X  
Cardholder Signature \_\_\_\_\_

**CAMPER INFORMATION: (please type or print)**

Camper First and Last Name				Nickname (if applicable)	
Address		City	State	Zip Code	
Phone		Email (please be sure to provide an email you actively use)			
Age	DOB (MM/DD/YYYY)	Current Grade	Troop	Girl Scout Council (if not GSGLA)	
How did you hear about camp? <input type="checkbox"/> Friend <input type="checkbox"/> Troop Leader <input type="checkbox"/> Previous camper <input type="checkbox"/> Camp brochure <input type="checkbox"/> Website/ e-Newsletter					
Optional: Name ONE girl your camper would like to be grouped with. Both campers must request each other and forms should be submitted together. Requests are not guaranteed.					Phone

**PARENT/GUARDIAN INFORMATION:**

(1) Parent/ Guardian Name		Home Phone	Cell Phone
Address		City	State
			Zip Code
(2) Parent /Guardian Name		Home Phone	Cell Phone
Address (if different)		City	State
			Zip Code

**EMERGENCY CONTACT:**

Emergency Contact Name	Phone	Relationship to Camper
------------------------	-------	------------------------

**CAMP SESSION SELECTION:**

Camp Property Name	Camp Session Title	Camp Date	Camp Fee	Weekly Extended Care (optional)		Subtotal
				AM (\$25)	PM (\$25)	
①						
②						
③						
④						
<b>Add one-time \$12.00 fee if NOT a Girl Scout</b>						\$
<b>TOTAL</b>						\$

**PERMISSION:**

As legal guardian, I give permission for the above girl to attend camp and participate in all activities, for her to be transported out of camp during the camp session for programs and other purposes, and for emergency treatment to be given to her in case of injury or illness, unless otherwise stated. I understand that if she is not currently a registered Girl Scout, an additional one-time \$12.00 membership fee will be applied to the overall cost of camp.

List Exceptions to Participation (if any)

X

Parent/Guardian Signature

Date

☐ Check here if you **DO NOT** authorize GSGLA to use images of camper for promotion of Girl Scouts.

✓ **PAYMENT (Check one):** ☐ \$25 DEPOSIT (PER SESSION) or ☐ TOTAL AMOUNT

✓ **PAYMENT METHOD (Check one):**

- ☐ Camper has applied for financial aid before **June 1, 2012** deadline —application and proof of income are attached
- ☐ GSGLA giftcard
- ☐ Check # \_\_\_\_\_ (payable to Girl Scouts of Greater Los Angeles) is attached
- ☐ Charge to credit card ☐ Visa ☐ MasterCard ☐ AmEx ☐ Discover

Cardholder Name	credit card/giftcard #	Exp Date	X Cardholder Signature
-----------------	------------------------	----------	---------------------------



# FINANCIAL AID CAMPERSHIP APPLICATION

2012

APPLICATION SUBMISSION DEADLINE: JUNE 1, 2012  
INCOMPLETE APPLICATIONS WILL NOT BE CONSIDERED

Please type or print. Complete *only* if applying for financial assistance. Camperships provide financial assistance for girls who cannot otherwise afford a camping experience. Campership funds are made possible by donations. Each applicant will be considered for one resident camp and one day camp. Camperships vary in amount and may not cover the entire cost of a camp(s). Loans are available for those who have applied for financial assistance, but do not qualify. Applicants will be notified if this is an option.

*Por favor escriba con letra de molde en los dos lados de esta aplicación. Hay fondos disponibles para becas gracias a donaciones. Las becas ofrecen ayuda financiera a las niñas que no tienen los medios para asistir al campamento. Cada niña es considerada para un campamento de residencia y un campamento de día. Las becas varían en cantidad y no necesariamente cubren el costo completamente de campamento. Préstamos están disponibles para los que han solicitado asistencia financiera pero no cualifican. Candidatos serán notificado si éste es una opción.*

## CAMPER INFORMATION/ INFORMACION DE LA NIÑA:

Camper First and Last Name/Nombre y Apellido de la Niña

Telephone/Teléfono

Address/Dirección

City/Ciudad

Zip Code/Código Postal

Email/Correo Electrónico

Is she currently a Girl Scout?/Es Girl Scout la niña? ☐ Yes/Sí ☐ No/No

Troop #/N° de Tropa

Girl Scout Council/Concilio

## PARENT/GUARDIAN INFORMATION/ INFORMACION DE LOS PADRES:

Parent/ Guardian Name/Nombre de Padre o Guardián

Telephone/Teléfono

Address/Dirección

City/Ciudad

Zip Code/ Código Postal

Total number of people in household (including camper)/Numero total de personas que usted mantiene en casa (incluyendo la campista):

Ages of dependent children/Edades de los niños:

Total yearly household income not including social service aid/Ingreso anual total de la familia sin contar la asistencia pública:

\$

Parent/ Guardian occupation/Oficio(s) de los padres o tutores:

Does your family receive social service aid?/¿Recibe a su familia asistencia social?

☐ Yes/Sí ☐ No/No

If currently receiving aid, write in the 11 digit case number/Si recibe asistencia social por favor escriba los 11 números de su caso:

## CAMPER HISTORY/HISTORIA DEL CAMPISTA:

Has your camper attended camp before?/¿Ha asistido su campista a algún campamento anteriormente?

☐ Yes/Sí

☐ No/No

Date/Fecha:

Did she receive a campership?/¿Recibió una beca?

☐ Yes/Sí

☐ No/No

If yes, what type?/Si contesto que sí ¿qué tipo?

☒ **THE FOLLOWING MUST BE ANSWERED FOR CONSIDERATION/EL SIGUIENTE DEBE SER CONTESTADO PARA CONSIDERACIÓN:**

- Dollar Amount family is able to contribute to camp costs/ La cantidad en dólares que su familia puede contribuir al costo:  
**THIS PAYMENT MUST BE PROVIDED AT TIME OF REGISTRATION!**  
**¡ESTE PAGO DEBE SER DADO EN EL MOMENTO DE INSCRIPCIÓN!**

\$

(amount based on what family can afford)

- Amount requested for financial assistance/¿Cuánto solicita para asistencia financiera?

\$

If unable to contribute any amount, please contact Annie Markowitz, EOA Manager, at [amarkowitz@girlscoutsla.org](mailto:amarkowitz@girlscoutsla.org)

Si no es capaz de contribuir cualquier cantidad, por favor contacta Annie Markowitz, EOA Gerente a [amarkowitz@girlscoutsla.org](mailto:amarkowitz@girlscoutsla.org)

## PARENT/GUARDIAN SIGNATURE/FIRMA:

Parent/Guardian Signature/Firma de Padres o Guardián

Date/Fecha

FOR OFFICE USE/ PARA USO DE LA OFICINA (NO ESCRIBA):

Date Rec'd

\$

Amount Paid

\$

Amount Requested

\$

Amount Granted

\$

Total Amount

**IMPORTANT! COMPLETE THE OTHER SIDE OF THIS FORM./¡IMPORTANTE! LLENE EL OTRO LADO DE ESTA SOLICITUD.**

Girl Scouts of Greater Los Angeles • 9525 Monte Vista Ave. • Montclair, CA 91763 • Phone (626) 677-3600 • Fax (909) 624-7928 • [www.girlscoutsla.org](http://www.girlscoutsla.org)



# FINANCIAL AID CAMPSHIP APPLICATION

## 2012

APPLICATION SUBMISSION DEADLINE: JUNE 1, 2012  
INCOMPLETE APPLICATIONS WILL NOT BE CONSIDERED

Please provide complete responses for all the questions below. Your responses will help us provide information to funding sources.  
*Es importante que responda por completo a todas las preguntas. Favor de dar detalles. Sus respuestas nos ayudarán a proporcionar información a fuentes de apoyo económico. Su nombre no se incluirá en la información que se envía a los patrocinadores.*

**Why does your child need financial assistance?/ ¿Por qué necesita su niña asistencia financiera?**

---

---

---

---

---

---

---

---

**Describe any problems (physical or emotional) or any tragic or traumatic event the child or family has encountered that impacts the need to request financial assistance./ ¿Ha sufrido la niña o la familia alguna tragedia o evento traumático, algún problema físico o emocional?**

---

---

---

---

---

---

---

---

**What are the child's positive qualities (initiative, determination, school involvement, helps at home, work skills)?/ ¿Qué cualidades positivas demuestra la niña (la iniciativa, la determinación, se distingue en sus estudios, ayuda en la casa, habilidades de trabajo)?**

---

---

---

---

---

---

---

---

**How will the child benefit from the camp experience?/ ¿Cómo puede beneficiar la niña de la oportunidad de participar en el campamento?**

---

---

---

---

---

---

---

---



### SUBMISSION INSTRUCTIONS:

Mail completed forms, proof of income, amount family is able to contribute, and camp registration to: Girl Scouts of Greater Los Angeles, 9525 Monte Vista Ave, Montclair, CA 91763, C/O Camp Registrar, or fax to (909) 624-7928 on or before June 1, 2012. **Proof of income required** (2011 tax return or recent pay stub).

*Los padres o los tutores deben llenar esta solicitud si asistencia financiera es necesaria. Envíe la solicitud, prueba de ingresos, cantidad que su familia puede contribuir al costo de campamento y la registración de campamento a: Girl Scouts of Greater LA, Camp Registrar, 9525 Monte Vista Ave., Montclair, CA 91763, C/O Camp Registrar, o fax a (909) 624-7928 en o antes de Junio 1, 2012. Se requiere comprobante de ingresos (declaración de impuestos de el año 2010 o talón de cheque reciente.)*

12/2011

**IMPORTANT! USE ADDITIONAL SHEETS IF NECESSARY./ ¡IMPORTANTE! USE HOJAS ADICIONALES SI ES NECESARIO.**

Page 2 of 2

Rules of acceptance and participation in the program are the same for everyone without regard to race, color, ethnicity, creed, national origin, age, and socioeconomic or special needs status, providing program and membership requirements are met. *Las reglas para admisión y participación en el programa de campamento son las mismas para todos sin considerar la raza, el color, el grupo étnico, las creencias, el origen nacional, la edad, el estado socioeconómico, ni alguna necesidad especial con tal de que cumpla con los otros requisitos del programa, y sea miembro de las Girl Scouts.*



**find out first on**

**facebook**

**Don't be the last of your friends to know.  
Check [facebook.com/GSGLA](https://facebook.com/GSGLA) and be the  
first to hear about council events,  
contests and giveaways!**

**girl scouts**  
greater los angeles





# Girl Scouts of Greater Los Angeles 100th Anniversary

Activities & Events

[www.girlscoutsla.org](http://www.girlscoutsla.org)



## Official Anniversary

**March 2012**

Several public and internal activities throughout March will celebrate our official anniversary (March 12, 2012). Of note, a council-wide community service project will take place on March 10, where a goal of 100 lbs. of food per troop will honor the official 100th Anniversary of Girl Scouts.

## Annual Meeting

**Volunteer Recognition Ceremony**

**April 14, 2012**

GSGLA's Annual Meeting will pay special attention to the anniversary while celebrating volunteers receiving recognitions and awards.

## Gold Award Ceremony

**June 30, 2012**

The annual awards ceremony celebrates girls earning the highest honor in Girl Scouting and features a notable and inspiring Girl Scout alumnae as a keynote speaker.

## Camporee

**October 26-28, 2012**

A three-day all-council encampment will bring the council together to celebrate our 100th Anniversary!

## Women of Distinction

**December 2012**

An inspiring fundraising event honoring L.A.'s top Girl Scouts alumnae. High school Girl Scouts can join with adult alumnae who will undoubtedly have an effect on their future.

## Community Action Project

**January - December 2012**

GSGLA will post several ideas for troops and service units to participate in local green initiatives, as part of the national GSUSA effort.

## 2012 Historical Displays

A display of historic Girl Scout uniforms and memorabilia will be showcased in several libraries and/or museums throughout L.A.

## Girlltopia

**October 29, 2011**

Anticipated to be the largest girl-focused expo in the Greater Los Angeles area, this all-day event officially kicks off Girl Scouts' 100th Anniversary.

Open to the entire community, this event features girl-targeted exhibits, "Funshop" workshops, speakers, performances, presentations, food and more!

## Tournament of Roses Parade

**November - January 2012**

GSGLA has a float in the 2012 Tournament of Roses Parade! Activities surrounding the float build include a rally, program and badge activities for girls, volunteer opportunities and a post-parade exhibit.


Honor a loved one by donating a float flower in their name that rides on the float, or purchase special Girl Scout seed packets to celebrate this exciting event!



# JOIN THE CELEBRATION!

To get involved with these events or Girl Scouts LA in general, call (888) GSGLA-4-U, or visit [girlscoutsla.org](http://girlscoutsla.org) to learn more!





girl scouts  
greater los angeles  
alumnae association

# Girl Scouts Isn't Just For Your Girls!

If you were ever a Brownie, Girl Scout, Girl Guide, or Girl Scout volunteer,  
**YOU ARE STILL A GIRL SCOUT.**



**Join the FREE GSGLA Green Directory to:**

Reconnect with amazing GS Alumnae!

Build your professional network!

Volunteer with current Girl Scouts!

**Add yourself at [www.girlscoutsLA.org](http://www.girlscoutsLA.org)**

For more information on the GSGLA Alumnae Association,  
contact Julie Lovelock at 626-677-2249 or [jlovelock@girlscoutsLA.org](mailto:jlovelock@girlscoutsLA.org)

# SPECIAL EVENT

## CAMP OSITO WORK PARTY WEEKEND

**June 1–3** All Age Levels, Free

**Sept. 14–16** All Age Levels, Free

Your help is needed! Work Party weekends are an opportunity to get outside and work in one of the most beautiful places in the San Bernardino Mountains. Join us at Camp Osito Rancho and participate in projects that will improve our camp. We will provide a place to sleep and good healthy meals to keep you going. Many projects are labor intensive, however, only enthusiasm is required.

You will receive hands-on instructions and all skill levels are welcome. Families, troops, groups or individuals may register. You will be sleeping and eating in one of the three buildings in camp or possibly even in our platform tents outside in our sleeping areas. The buildings have indoor heating, flush toilets, hot and cold water, and a fireplace (except in the health center). These buildings are dormitory style sleeping on metal cots with 3" pads set up as bunk beds. The outdoor sleeping units have flush toilets, hot and cold running water and showers. The platform tents sleep four to a tent on metal cots with 3" pads.

Arrivals are between 2 p.m. and 5 p.m. Friday; departures by 2 p.m. Sunday. For more information, contact Carolyn Goss, [cgoss@girlscoutsla.org](mailto:cgoss@girlscoutsla.org) or (626) 677-2302.



NON-PROFIT ORG  
U.S. POSTAGE  
**PAID**  
CLAREMONT, CA  
PERMIT #77

 **girl scouts**  
greater los angeles  
801 S. Grand Ave., Suite 300  
Los Angeles, CA 90017