

girl scouts  
greater los angeles



**New!** Enroll in Go the Distance fitness patch program and meet criteria while at Family Fit Fair! Plus, get a cool multi-function silicone band pedometer! More info on the Fit Fair page.



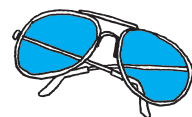
## **Costume 5K & 2K Run/Walk!**

### **Fitness Stage!**

### **Exhibit & Game Area!**



**When:** Oct 8, 2016  
10 a.m.–2 p.m.



**Where:** El Dorado East Regional Park  
Long Beach (parking \$7)

**Who:** Girl Scouts, tagalongs,  
family/friends welcome!

**Cost:** \$15 through 6/30  
\$20 after 6/30  
Medal & fun patch included



**Register:** [www.girlscoutsla.org](http://www.girlscoutsla.org)  
Deadline: Sept. 22



**Visit the GSGLA website for details**