

The
Camp
Issue

Feb
2016

GREATER

Girl Scouts of Greater Los Angeles Publication

pull-out
poster inside!

In This Issue

*Camps
& Programs,
May-Sept*

*Hear from a
100-Year-Old
Girl Scout!*

GAM Rules!

I can't wait to

go to camp!

A NEW WAY TO ICE AGE

TARPITS.ORG



A NEW WAY TO NATURE

NHM.ORG

NATURAL
HISTORY
MUSEUM
LOS ANGELES COUNTY

LA BREA
TAR
PITS
& MUSEUM

#ANewWaytoMuseum

Turn your next Troop outing
into a museum adventure.
Plan your Troop visit today,
call 213-763-3218.

TABLE OF CONTENTS

CAMP GUIDE

2	Welcome to Camp!
3	Camp Properties
4	Camp Registration
5	Financial Aid
6	Frequently Asked Questions
9	Camp Osito Rancho Resident Camp
12	Day Camps
12	El Ranchito
15	Marine Landing
18	Mariposa
20	La Casita
21	Specialty Camps
21	Specialty Day Camps
23	Specialty Overnight Camps (Girls or Troops)
25	Specialty Overnight Camps (Families or Troops)
26	Camp Forms

PROGRAM GUIDE

31	General Information
32	April
33	May
35	June
35	July
36	August
36	September

GSGLA NEWS

36	GSGLA News
35	Property News
38	Gabbing with Girl Scouts
42	Five Minutes With...
42	Volunteer Voices
43	Adult Trainings

Headquarters

801 S. Grand Ave., #300
Los Angeles, CA 90017

Business hours:

Mon–Fri, 8:30 a.m.–5 p.m.

GSGLA offices are
closed on the second
and fourth Monday
of each month.

GSGLA is committed to the extraordinary legacy of Girl Scouts and its mission to build girls of courage, confidence, and character, who make the world a better place.

For more information on how to join, volunteer, reconnect, or donate, call 213-213-0123 or visit girlscoutsla.org.

GSGLA is an Equal Opportunity Employer.

Información disponible en Español o llamando al 213-213-0123.

We can't wait to

see you!

Dear GSGLA Girl Scouts and Girl Scout Families:

For 104 years, Girl Scout camp has served as a foundation for friendship, fun, and growth for girls across the nation.

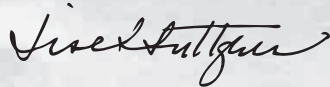
At Girl Scouts of Greater Los Angeles, we have the unique opportunity to provide girls with day and resident camp experiences, in locations reflecting our diverse geography: from the beach to the mountains, our local neighborhoods to our national forests. And in recognizing the importance of outdoor adventure, our council continues to upgrade and modernize our facilities.

Girl Scout camp is the place for girls where girls can foster their independent spirits, while having fun and trying new experiences. It's where girls conquer fears, meet lifelong friends, and create lasting memories.

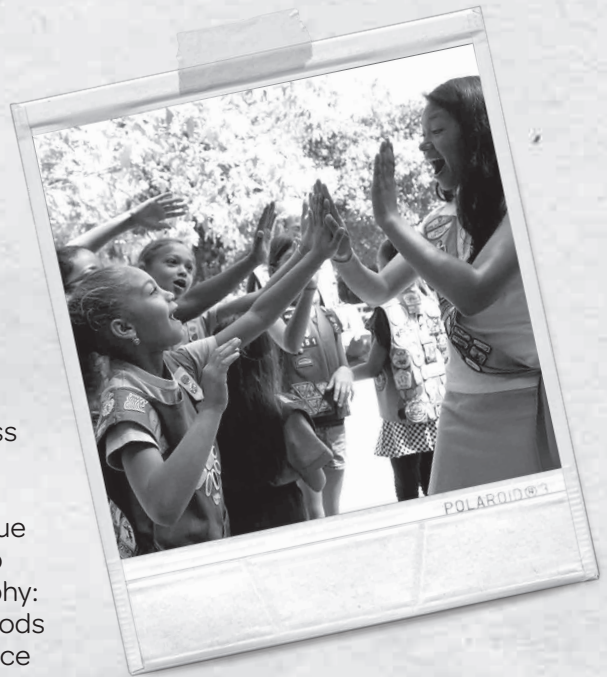
I invite you to peruse all of the listings in our camp guide, as well as in our program guide—plus, hear from your sister Girl Scouts and catch up on GSGLA news. There are so many exciting opportunities for Girl Scouts in Greater LA.

We can't wait to see you this summer!

Yours in Girl Scouting,



Lise L. Luttgens
Chief Executive Officer



PROMOTING YOUTH DEVELOPMENT

Girl Scouts is the premier leadership organization for girls! Girl Scouts of Greater Los Angeles supports the mission of the organization by providing engaging and empowering opportunities, such as camp experiences, to more than 40,000 girls.

According to an American Camp Association (ACA) study, camp engages youth to learn about themselves while gaining skills in:

- leadership
- independence
- social comfort
- self-esteem
- friendship skills
- adventure & exploration
- environmental awareness
- values & decisions
- peer relationships
- spirituality



GSGLA PROPERTIES

CAMP MARIPOSA

Mariposa Day Camp is a cozy camp in the foothills of Altadena in the San Gabriel Valley. It includes a wooded area with a small pond and a campfire ring with an adjacent amphitheater. This site will host weeklong themed day camps.

CAMP OSITO RANCHO

This premier Girl Scout outdoor leadership center is a spectacular 160-acre high-adventure camp located in the San Bernardino Mountains above Big Bear Lake at 7,500 feet. Activities include swimming, archery, team-building games, and nature and environmental activities. We also offer a challenge/ropes course, zip line, hiking, outdoor cooking, canoeing, horseback riding, as well as arts and crafts.

LA CASITA PROGRAM CENTER

Girls connect with nature at La Casita. Nestled in the foothills of north Claremont, this tranquil five-acre setting is surrounded by 1,600 acres of rolling hills, hiking trails, and bountiful wildlife. This is a great environment for girls to get a taste of camp. La Casita will host a weeklong themed day camp.

EL RANCHITO

El Ranchito Day Camp is an outdoor, park-like property located at the Long Beach Service Center that includes outdoor and indoor sleeping accommodations. The property includes four fire rings, an archery range, low ropes elements, and a climbing wall. El Ranchito will host weeklong themed day camps.

MARINE LANDING

Marine Landing Day Camp is located on Alamitos Bay in Long Beach. Marine Landing is a one-of-a-kind waterfront facility offering a private boating beach, charming boathouse, and beautiful sea views. Camp sessions will include boating and marine activities plus swimming and plenty of playtime at the beach. The site will host weeklong themed day camps.

For more information on renting GSGLA properties, please email propertyreservations@girlscoutsla.org.



I can't wait to

register!

WHEN TO REGISTER

Registration for all summer camps opens **Feb. 12, 2016**. Registrations are processed on a first-come, first-served basis. We encourage current Girl Scouts to register online to expedite the registration process before spots sell out! Note: Girls must be registered members for the 2015–16 membership year in order to register for GSGLA camps.

HOW TO REGISTER

Register online at **girlscoutsla.org**—registrants must already have an online eBiz account or be able to **activate one**. (Please direct questions regarding eBiz account activation to helpdesk@girlscoutsla.org.) Our online eBiz system accepts all major credit cards. (Note: **Email is the main form of camp communication, so please enter an email address that you actively use and check your Spam folder regularly.**)

Non-Girl Scout Members: Families of non-Girl Scout members must create an eBiz account and purchase a Girl Scout membership (\$15 per year) in order to register for camp. To set up an eBiz account or for further assistance, please email the help desk at helpdesk@girlscoutsla.org.

Girl Scouts Registered With Other Councils: Registrations can be submitted in person at your local GSGLA Service Center or faxed to 909-624-7928; or mailed to: GSGLA Montclair Service Center, 9525 Monte Vista Ave., Montclair, CA 91763 c/o Camp Registration. Please contact your council and request that they share your daughter's membership record with GSGLA.

El Ranchito, Marine Landing, Mariposa, and Osito Rancho allow for deposits. All other camps found in the camp guide require full payment at the time of registration. **Deposits are non-refundable and non-transferable between camps.**

Girls who would like to request a “camp buddy” may do so online. Girls must register for the same camp session. While every attempt is made to place girls together, it is not guaranteed.

Camp fee balances are due four weeks prior to the start of every camp session. Late payments **will** result in a loss of placement in the camp and forfeit of the deposit. **If payment is not received, your camper will be dropped from the camp and the deposit will be forfeited. It is the responsibility of the camper's parent to pay camp fee balances by this deadline, regardless of whether an invoice is received.** Balances may be checked through your eBiz account. **If a registration is submitted after balances are due, payment in full is required.**



Confirmations will be sent by email and will include a link to Health History forms (also available at girlscoutsla.org).

REFUND POLICY

Registrations are processed on a first-come, first-served basis. If your camper's selected camp is full and no alternative is available, you will receive a full refund for any deposit or fees paid. **All deposits for all camps are otherwise non-refundable and non-transferrable.** The only exception to this policy is:

- If a camper can no longer attend camp due to illness or injury, a physician's letter must accompany the refund request prior to the start of camp.

No prorated refunds will be made for campers who leave early, or choose not to attend the full camp session.

Refund requests must be submitted by email to Camp Registration at campregistration@girlscoutsla.org.

FINANCIAL AID | CAMPERSHIPS — DEADLINE TO APPLY IS MAY 6, 2016

Financial aid "camperships" are awarded to campers on the basis of financial need only, and are available for all resident, day, and specialty camps. Each applicant will be considered for one resident/specialty camp or two-day camps. Families are asked to provide the maximum dollar amount they can contribute for camp. This amount is based on what a family can afford and must be provided with the campership application for consideration. Camperships vary in amount and may not cover the entire cost of a camp(s). **Parents interested in applying for a campership must submit all of the following documents together by May 6, 2016 for consideration:**

- Completed Camp Registration form
- Maximum dollar amount family is able to contribute at time of registration
- Completed Financial Aid Campership Application (Please note: Application form is double-sided.)
- Copy of proof of income for all contributing members of the household (2015 tax return)

Incomplete applications will not be considered and will be returned to you by mail. Please note: Only registered girl members of GSGLA can apply for financial aid.

The deadline to submit campership applications for all camps is May 6, 2016, regardless of when the selected camp(s) takes place. Registrations can only be submitted at the Montclair Service Center; faxed to 909-624-7928; or mailed to: GSGLA Montclair Service Center, 9525 Monte Vista Ave., Montclair, CA 91763 c/o Financial Aid–Camp. *All mailed applications must be postmarked on or before May 6, 2016,* to be considered. Please direct all financial aid questions to Camp Registration at campregistration@girlscoutsla.org.

Please submit only one application per girl. Awarding rules are the same for every applicant, without regard to race, ethnicity, age, or special needs, provided all program requirements are met. **Campers who are selected to receive a campership will be informed of their award by email. Please make sure to check your spam folder for communications.**

FREQUENTLY ASKED QUESTIONS

Who owns and operates the camps?

Girl Scouts of Greater Los Angeles (GSGLA) owns and operates two resident camps in the Greater Los Angeles area: Camp Osito Rancho in Big Bear and Camp Lakota in Frazier Park. GSGLA also operates several unique program sites that host day and/or specialty camps listed on our property highlights page. While many camps are held at GSGLA-owned facilities, GSGLA has partnerships with non-Girl Scout facilities to host specialty camping opportunities created to best meet the varying interests of girls. GSGLA program staff members work directly with these partners when offering a camp experience through our organization.

Do I have to be a Girl Scout to attend camp?

If a camper is not currently a Girl Scout, a one-time \$15 annual membership fee will be applied in addition to the total camp fees. As a member, girls can participate in an array of council-sponsored programs located across the Greater Los Angeles area.

Are there age limits for certain camps?

Yes, all of our camps are geared toward certain age groups. Please check camp descriptions for grade specifications. Listed grades refer to the upcoming school year which is the grade the camper will be attending in the fall.

Is financial aid available?

Yes, financial aid “camperships” are available for campers whose family financial circumstances might otherwise prevent them from attending camp. Interested applicants must submit the Financial Aid Campership Application with their camp registration form, family contribution, and proof of income by May 6, 2016. For more details please see the Financial Aid section on page 5.

Will my camper need a physical examination to attend camp?

For resident camp, yes. Each camper is required to have a physical examination within 12 months of the starting day of their scheduled camp session. A Health History Form is required for all campers and must be completed no more than two months prior to the camper’s session. Please note that there are additional camps where a physical will be required. The form will be included in the camper confirmation packet and is available to download at girlscoutsla.org.

What if my child needs medical or special attention while at camp?

Resident camp has a qualified professional health supervisor on site, and all camps have first-aid-certified adults on site at all times who administer routine health care and any medications. An emergency contact plan is in place should any medical emergencies occur. Parents are notified as soon as possible in the event of any special medical or emergency situation. If your camper has any special needs (physical, behavioral, etc.), every effort will be made to accommodate her special needs. Please include any past or potential concerns on the Health History Form. The camp director will contact you prior to your daughter’s session.

Can special foods be provided?

Most special dietary needs can be met if camp directors are notified in advance. At resident camp, meal options due to medical, religious, or other reasons are available. Please indicate these requirements on your camper’s Health History Form. Vegetarian alternatives are offered at every meal.

Can my camper be in the same unit as her friend?

While every attempt is made to place girls together, it is not guaranteed. Girls must be the same program level and be registered for the same camp session. For more details, please see the How to Register section on page 4.



What are camp staff like?

Camp staff (paid and volunteer) are enthusiastic, fun, caring, energetic, well-trained, and experienced individuals who are hired based on their ability to work with children in a learning and nurturing environment. All staff are required to complete between 10 and 40 hours of training, based on camp and position.

American Camp Association accreditation for resident camp requires training for all resident camp staff on topics including youth supervision, child development, program planning, conflict resolution, first aid, CPR, and additional certification for specialized program delivery. The resident camp ratio of staff to campers fourth grade and above is 1:8, second and third grade is 1:6, and 1:6 for high-adventure programs. The day camp ratio is 1:10, and for aquatic activities it is 1:8.

What camp health and safety standards are maintained?

All GSGLA camps meet the health and safety standards and guidelines established by Girl Scouts of the USA and the State of California.

What is a counselor-in-training (CIT)?

CIT is a program that prepares Senior and Ambassador Girl Scouts for future roles in youth leadership in and outside of camp. The revamped CIT leadership program will be offered at El Ranchito, Marine Landing, Mariposa, and Osito Rancho. Girls in grades 9–12 who are interested in a future job as a camp counselor or who want to expand their leadership skills in other arenas are encouraged to participate in our CIT I or CIT II Summer Leadership Experience. Girls entering grades 9–10 will be CIT I, while girls entering grades 11–12 will be CIT II. Regardless of age, all CITs must complete a council-led program aide training. More information can be found on the Summer Camp page at girlscoutsla.org. **Programs that do not offer a CIT program may include a leadership opportunity for girls 7–12 as a program aide.**

What is a program aide (PA)?

Program aides are Girl Scouts in grades 7–12, who are interested in working with younger girls, sharing their knowledge and talents with them while gaining valuable experience under adult supervision. These Girl Scouts have completed the required council-led program aide training and have registered for the PA camp programs. Camp-specific program aide training for day camp is required each summer, for both new and returning PAs.



They earn community service and leadership hours while satisfying school volunteer and Girl Scout leadership requirements. Program aide training opportunities can be found at girlscoutsla.org.

Do adults attending overnight camps need to complete a background check?

Yes, all adults participating in overnight trips must first be registered and cleared as a GSGLA adult volunteer by following these steps:

1. **Become a member** with Girl Scouts of Greater Los Angeles by creating an account with and registering through eBiz. (Visit girlscoutsla.org and click on the eBiz tab in the top right corner.)
2. **Complete a volunteer application** at gsglavolunteerapps.org.
3. Upon completion of the Volunteer Application, a unique link will automatically be emailed to you to **complete a background screening**.

For more information or questions about the clearance process, please contact customercare@girlscoutsla.org or 213-213-0123.



girl scouts
greater los angeles

Did You Know?

Each year, hundreds of girls who attend GSGLA camps **need financial assistance.**



Donate Today!

Help give another girl a summer to remember!

Visit girlscoutsla.org to learn more about giving.



I can't wait to camp at

Osito Rancho!

Located in Big Bear, this beautiful resident camp offers girls the opportunity to experience all that the great outdoors and our camp property has to offer. Sample activities include swimming, archery, canoeing, challenge course, zip line*, horses**, hiking, arts and crafts, and nature. Our days and nights are filled with adventures and new challenges.

Here, the Girl Scout Leadership Experience comes to life. Girl-led opportunities and decision-making is encouraged throughout the camp session. Our camp program focus will allow girls to discover themselves and connect with others as they explore all the adventures of camp. The Journey series It's Your Planet—Love it! is woven into all the program areas of camp for Brownies, Juniors, and Cadettes. We also offer the opportunity for campers to complete many requirements for the new Outdoor Adventure badges.

Transportation via school bus*** to and from resident camp from the Arcadia, Long Beach, and Woodland Hills Service Centers is included in the cost of each session. You can also choose to drive your child **to** and **from** camp. **We cannot accommodate interchanging the methods of transportation.** Transportation **to** and **from** camp must stay consistent in order to provide the best possible safety and service for the girls—if your camper rides the bus to camp, she **MUST** ride the bus home. If your camper is driven to camp, she **MUST** be picked up from camp. **The location you select for transportation, is final once your registration is completed and processed. There are no exceptions.**

At Osito Rancho we strive to provide well-balanced, kid-approved meals throughout the week. To ensure all campers are taken care of, we provide vegetarian, gluten-free, nut-free and dairy-free options at each meal (**if it is stated on the camper's Health History Form**). Please note options may be different from what others are eating. If you feel that your child's dietary restrictions need more specific attention, please speak with Camp Director Kalie Brisbon and arrange to send food with your camper on the bus.

Each camper will receive a commemorative item with the camp logo, a camp patch, and any badges earned.

Non-Girl Scout Members: Families of non-Girl Scout members must create an eBiz account and purchase a Girl Scout membership in order to register for camp. To set up an eBiz account or for further assistance, please email the help desk at helpdesk@girlscoutsla.org.

Girl Scouts Registered With Other Councils: Registrations can be submitted in person at your local GSGLA Service Center; or faxed to 909-624-7928; or mailed to: GSGLA Montclair Service Center, 9525 Monte Vista Ave., Montclair, CA 91763 c/o Camp Registration. Please contact your council and request that they share your daughter's membership record with GSGLA.

For more information about any of the resident camp sessions or activities, or dietary needs, please contact Kalie Brisbon, kbrisbon@girlscoutsla.org.

(Osito Rancho programs continued)

Please note: Due to various factors, your camper may not be able to participate in all of the activities offered at Osito Rancho. Weather at camp can change rapidly causing our activities to be canceled due to rain or lightning. We do our best to reschedule, but due to time constraints, this is not always possible.

**Our zip line has a weight and age limitation. In order to provide the safest and best experience for the girls, participants must be entering eighth grade and above and be between the weight limits of 80-250 pounds.*

***Girls who have registered for our horse camp sessions are guaranteed time with the horses daily. We will do our best to provide non-horse camp participants time with the horses. Again, this is based on time and weather.*

****Due to the mountain roads into camp, we are restricted to the rental of school buses. We will arrange for a safe place to stop and use the restroom to and from camp, if needed.*

HEALTH FORMS

The Camp Osito Rancho Health History Form must be signed by a physician. Please visit girlscoutsla.org to download the 2016 Camp Osito Rancho Health History Form, or follow the link provided in your email confirmation once you register for camp. **All correspondence will be by email, so please check your eBiz account to make sure your email is correct and up to date in order to receive vital information regarding camp.** ONLY Camp Osito Rancho Health History Forms will be accepted—no substitutions for school or other camps will be allowed. Signed and completed 2016 Camp Osito Rancho Health History Forms must be scanned and emailed to: ositoranchohealthforms@girlscoutsla.org. **Forms must be received at least two weeks prior to your camper's session of camp. We will not be accepting any forms in person on the first day of camp.** If these deadlines are not met, your girl will not be able to attend that session of camp and you will need to contact the registration department regarding the balance of your account. If forms cannot be emailed, please contact the **Osito Rancho Health Forms Hotline for more information on how to submit: 626-677-2282 or ositoranchohealthforms@girlscoutsla.org.** (For general questions about programs or operations at Camp Osito Rancho, contact Camp Director Kalie Brisbon at kbrisbon@girlscoutsla.org or 626-677-2300.)

CAMP ACCREDITATION

Camp Osito Rancho is accredited by the American Camp Association (ACA). Every three years, the camp goes through an accreditation process with on-site visits to evaluate and verify compliance with a set of national standards established by professionals in the camping industry. This is an action we take voluntarily. The standards establish guidelines for needed policies, procedures, and practices in the administration of key aspects of camp safety management.



COUNSELORS-IN-TRAINING (CIT) PROGRAM

The CIT Summer Leadership Experience is a great opportunity for girls in grades 9–12 who are interested in working as a camp counselor or want to expand their leadership skills. CITs will shadow counselors, be a mentor, and work with younger girls in the camp environment. While having fun, CITs will also gain a better understanding of how camps are run. Although much of the time at camp will be focused on CIT curriculum, girls will have the opportunity to participate in some of the other camp activities specific to the camp they are attending.

CIT I Pre-requisites: Must have completed Program Aide Training and complete the online module Daisy Characteristics on gsglaonlinetraining.org.

CIT II Pre-requisite: Must have completed Program Aide Training; CIT I; and Daisy, Brownie, and Junior Characteristic modules on gsglaonlinetraining.org.

To apply for a position as an Osito Rancho CIT, contact Kalie Brisbon, kbrisbon@girlscoutsla.org.

THEMED WEEKS OF CAMP

The Great Outdoors**Session 1 / July 12–16 (4 nights)**

New adventures await you as you experience the world of camp! Try your hand at archery, learn canoeing and other outdoor adventure activities while meeting new friends and enjoying all our beautiful camp has to offer. Every day is a new experience and as night falls, a new world opens up. Sleep under the stars, take a flashlight hike, watch the moon, and of course sing around the campfire. Don't forget your favorite PJs for an all-camp pajama party. Join us and make memories that last a lifetime!

Follow the Trails**Session 2 / July 18–23 (5 nights)**

Discover what you love about camp through exploration and adventure. Experience our many high-adventure activities while learning new outdoor camping skills, archery, and canoeing. Camp does not stop when the sun goes down; take a night hike to our superhero-themed stargazing party. The magic of camp is waiting for you!

Girl Scouts 101**Session 3 / July 26–30 (4 nights)**

It's time to get back to basics and live life the Girl Scout way! Rule the forest while learning survival techniques and Girl Scout camp traditions. Hone your archery skills, enjoy team-building activities, and make fun camp crafts. Bring your favorite tie-dye to wear for the '60s-themed dance party with your new friends. Sing around the campfire, soak in nature's beauty, and experience a night hike under the stars. This is what camp and Girl Scouting is all about!

Nature's Clues**Session 4 / Aug. 1–6 (5 nights)**

Every day is a new experience at camp! Create everlasting memories while climbing the rock wall, testing your skills at archery, hiking, and making crafts. Share your stories with your new friends as you sleep under the stars and experience nightlife to find nature's clues in a camp-wide geocache hunt. Celebrate your week

together with a Cowgirl-themed meal. Camp adventures are at your fingertips!

Outdoor Artistic Adventures**Session 5 / Aug. 9–13 (4 nights)**

Explore your imagination as you experience the beauty around camp. Express yourself through poetry or painting after hiking through the woods. Enjoy canoeing, try your hand at archery, and participate in other outdoor adventure activities. Share your art with all of camp at the princess gala, a themed party for you and your camp sisters. Spend time singing around the campfire, and discovering the wonders of camp at night. Build memories that will stay with you forever!

HORSE CAMP

The equestrian staff works with campers in group sessions, instructs in Western riding, and provides individual attention based on a camper's skill level as a rider. Beginner and intermediate riders are encouraged to attend. Our program offers beginning-level horsemanship skills and mountain terrain trail rides. All sessions include horse care, saddling, and riding instruction. While the majority of the time at camp will be focused on horse-related activities, girls will have the option of participating in some of the many other activities camp has to offer.

Saddle Up – Offered for both four- and five-night sessions.

Spend your days exploring the forest on horseback! Learn about grooming and feeding the horses along with saddling, bridling, and cueing—all while developing your individual riding skills in the arena and on the trail. Saddle up for an adventure like no other!

RESIDENT CAMPS DATES & COSTS

Session 1: July 12–16 (4 nights)**The Great Outdoors** Grades 2–8, \$490**Saddle Up (horse program) Session I**

Grades 4–8, \$620

CIT I Session I Grades 9–10, \$350**CIT II Session I** Grades 11–12, \$350**Session 4:** Aug. 1–6 (5 nights)**Nature's Clues** Grades 2–8, \$590**Saddle Up (horse program) Session IV**

Grades 4–8, \$720

CIT I Session IV Grades 9–10, \$450**CIT II Session IV** Grades 11–12, \$450**Session 2:** July 18–23 (5 nights)**Follow the Trails** Grades 2–8, \$590**Saddle Up (horse program) Session II**

Grades 4–8, \$720

CIT I Session II Grades 9–10, \$450**CIT II Session II** Grades 11–12, \$450**Session 5:** Aug. 9–13 (4 nights)**Outdoor Artistic Adventurers**

Grades 2–8, \$490

Saddle Up (horse program) Session V

Grades 4–8, \$620

CIT I Session V Grades 9–12, \$350**CIT II Session V** Grades 10–12, \$350**Session 3:** July 26–30 (4 nights)**Girl Scouts 101** Grades 2–8, \$490**Saddle Up (horse program) Session III**

Grades 4–8, \$620

CIT I Session III Grades 9–10, \$350**CIT II Session III** Grades 11–12, \$350



I can't wait to go to

El Ranchito!

Located in Long Beach, El Ranchito offers an exciting adventure every week! At this beautiful tree-filled, park-like day camp, girls are grouped by grade level in shaded units. Girls explore traditional Girl Scout activities such as games, arts and crafts, songs, interacting with nature, and making new friends. They will also have the opportunity to earn badges. We offer many exciting elements at El Ranchito, including an archery range, gaga (a kinder and gentler version of dodgeball) court, low ropes course, and a 32-foot tall climbing wall. All campers can enjoy the gaga court and low ropes course, and our campers entering **grades 2–6** have the opportunity to participate in archery and the climbing wall. These activities are available every week of camp. (Please note: Due to safety activity guidelines from Girl Scouts of the USA, kindergarten and first-grade campers are unable to participate in climbing and archery.)

Our campers entering grades 4–6 will experience enhanced girl-led choices, including building their leadership skills, exploring what it means to be a program aide, more elaborate arts and craft projects, urban hiking through Heartwell Park, advanced team building, gaga competitions, and more. Special weeks will offer an evening program including dinner and a campfire program. New this year: Sixth-grade Cadettes and Cadette program aides will participate in the Toyota Financial Literacy program and earn two badges and a unique patch. The themes for each week provide additional activities and enjoyment for the campers. Price includes: daily snacks, a commemorative El Ranchito item, a camp patch, any badges earned, and a group picture. For more information, please contact Kalie Brisbon, kbrisbon@girlscoutsla.org.

Non-Girl Scout Members: Families of non-Girl Scout members must create an eBiz account and purchase a Girl Scout membership in order to register for camp. To set up an eBiz account or for further assistance, please email the help desk at helpdesk@girlscoutsla.org.

Girl Scouts Registered With Other Councils: Registrations can be submitted in person at your local GSGLA Service Center; or faxed to 909-624-7928; or mailed to: GSGLA Montclair Service Center, 9525 Monte Vista Ave., Montclair, CA 91763 c/o Camp Registration. Please contact your council and request that they share your daughter's membership record with GSGLA.

EXTENDED CARE

Extended Care: Camp hours are 9 a.m. to 4 p.m. Before and After Care is available 7 to 9 a.m. and 4 to 6 p.m. for \$50 per week. If only a.m. or only p.m. care is needed, the cost is \$25 per week. There is no daily rate. **Note: A \$10 late fee will be charged every 15 minutes after 6 p.m.**

SUMMER CAMP LEADERSHIP EXPERIENCES: PROGRAM AIDE (PA) AND COUNSELOR-IN-TRAINING (CIT)

Girls entering grades 7–12 must have completed Program Aide Training before applying. **NEW THIS YEAR: Girls entering grades 9–12 will need to complete additional requirements to become a counselor-in-training.**

CIT I Pre-requisites: Must have completed Program Aide Training and complete the online module Daisy Characteristics on gsglaonlinetraining.org.

CIT II Pre-requisite: Must have completed Program Aide Training; CIT I; and Daisy, Brownie, and Junior Characteristic modules on gsglaonline.training.org.

An El Ranchito PA/CIT orientation is mandatory for girls who will be in the leadership program during the summer camp season. We will offer two sessions: May 18 and May 26, 6 p.m.–8 p.m. at the Long Beach Service Center. PAs and CITs are assigned to units and work closely with counselors and campers. To apply to be a PA or CIT, contact Kalie Brisbon, kbrisbon@girlscoutsla.org. All participants in the leadership program will receive a shirt.

Super Girls

June 13–17

Grades K–6, \$165

Girls rock! Join us as we explore all the awesome ways girls run the world! Tie-dye, face paint, and make tutus for a dance party. Get empowered while learning self-defense and exploring fitness. Girls will enjoy several special guests who will share unique insights into careers women are conquering. Lastly, campers will spend a relaxing day learning yoga and the art of homemade spa products. Daisies will earn the Promise Center, Brownies will earn the Making Friends badge, and Juniors will earn the Independence badge. Have fun with art and sports, and brand new friends as we girl power through this exciting camp!

Broadway Boogie

June 20–24

Grades K–6, \$165 (Friday evening performance)

Our annual song-and-dance camp is back by popular demand! Explore different styles of music, dance, and theater through the decades. Enjoy visits from special guest performing artists and create your own instrument. Each unit will learn two musical numbers (music, lyrics, and choreography) and create props and costume pieces for the final performance on El Ranchito's brand new stage. Daisies will earn the Lupe petal, Brownies will earn the Dancer badge, and Juniors will earn their Musician badge. **Sing and dance your way into the hearts of all who attend our grand finale performance on June 24 at 5 p.m.**

World Wide Camp Chef

June 27–July 1

Grades K–3, \$165

Grades 4–6, \$175 (Wednesday Evening Program)

Take advantage of the great outdoors and create delicious food while exploring various methods of outdoor cooking and food preparation. Juniors and Cadettes will create recipes and test dishes before competing in our second annual Camp Chef Competition featuring a special panel of guest judges. Daisies will earn the Zinni petal, Brownies will earn the Snack badge, and Juniors will earn the Simple Meals badge. **Girls entering fourth grade and above are invited to join us for an extended day at camp that includes dinner and a campfire program.**

Soarin' Over California

July 5–8

Grades K–6, \$132 Prorated

Celebrate what makes our beautiful state so special—from the north to the south! Make California poppies and discover the state flag. Tie-dye and have cable car races as we leave our hearts in San Francisco, and step back in time to explore the gold rush by panning for gold and tracking down this precious treasure all through camp. Then, join us in Hollywood (El Ranchito style!) as we make our very own mini film and walk down our camp's red carpet at our movie premiere. On Friday, we will celebrate and learn all about the unique city in our own backyard—Long Beach! Daisies through Juniors will be introduced to the It's Your Planet—Love it! Journey.

Little Camp on the Prairie

July 11–July 15

Grades K–3, \$165

Grades 4–6, \$175 (Wednesday Evening Program)

Get your bonnets ready and hop on the covered wagon as we go back in time to when Laura Ingalls Wilder lived. Leave your technology behind as we explore the Wild West and prairie life. Learn to sew and knit as we explore old-fashioned crafts. Make butter and bake biscuits over an open fire and enjoy our snack with freshly squeezed lemonade! Special guests will teach new skills, and all of camp will come together on Friday for our country fair. Daisies will earn the Tula petal, Brownies will earn the Making Games badge, and Juniors will earn the Gardener badge.

Girls entering fourth grade and above are invited to join us for an extended day at camp that includes dinner and a campfire program.



(El Ranchito programs continued)

To Infinity and Beyond

July 18–22

Grades K–6, \$165

Oh my! We have lost the precious emerald of El Ranchito and a clue tells us we must travel through time to find it. Up for the challenge? Travel back to when dinosaurs roamed the earth as we have a dinosaur hunt. Arrive at Ellis Island and discover a new identity as we enter the modern world. Only the brain power of Girl Scouts using science, technology, and engineering can conquer this mystery. Daisies will earn the Mari petal, Brownies will earn the Senses badge, and Juniors will earn the Geocacher badge. This camp is jam-packed with activities and clues.

Under the Big Top

July 25–29

Grades K–6, \$165 (Friday evening variety show)

Ready to get silly and explore the world of performance and circus arts? If you like our song-and-dance camp, you'll love this week. Learn to juggle, prepare skits, and dance the days away. See an acroyoga demonstration, and end the week with a fun carnival featuring games and a special carnival treat. With fun crafts, shows, and interactive games, this camp has something for everybody. Daisies will earn the Gloria petal, Brownies will earn the My Best Self badge, and Juniors will earn the Social Butterfly badge. **"Come one, come all," and join us under the big top for a special variety show on our very own El Ranchito stage, July 29 at 5 p.m.**

Adventurers

Aug. 1–5

Grades K–3, \$165

Grades 4–6, \$175 (Wednesday Evening Program)

Get back to Girl Scout basics by learning outdoor skills that will empower you to travel anywhere in the world. Improve your outdoor cooking skills, learn the art of knot tying, and geocache around Heartwell Park. Create memories with new friends in a tent you assemble yourself and challenge yourself on our low ropes course. Daisies will earn the Gerri petal, Brownies will earn the new Outdoor Adventurer badge, and Juniors will earn the Camper badge. **Girls entering fourth grade and above are invited to join us for an extended day at camp that includes dinner and a campfire program.**

ARTrageous

Aug. 8–12

Grades K–6, \$165

Join us for the final week of summer camp 2016 for a colorful good time. Create masterpieces through painting, sculpting, drawing, coloring, and design. Discover women artists from the past and meet special guests from the community who will share their artwork and inspirations. Daisies will earn the Vi petal, Brownies will earn the Painting badge, and Juniors will earn the Drawing badge.





I can't wait to go to

Marine Landing!

Located in Long Beach, this camp offers Girl Scouts the opportunity to develop their boating skills, kayak, canoe, swim, and have fun in the sand at two of the local beaches. Girls will meet new friends, play games, make crafts, and sing songs. Badge work, or other skill-building programming, is included in each week's activities. Juniors and Cadettes have the added bonus of paddle-boarding, as well as attending extended evening programs on certain weeks. Price includes: daily snacks, camp patch, any badges earned, a commemorative Marine Landing item, and a group photo. For more information, please contact Jessie Chandler, jchandler@girlscoutsla.org.

Non-Girl Scout Members: Families of non-Girl Scout members must create an eBiz account and purchase a Girl Scout membership in order to register for camp. To set up an eBiz account or for further assistance, please email the help desk at helpdesk@girlscoutsla.org.

Girl Scouts Registered With Other Councils: Registrations can be submitted in person at your local GSGLA Service Center; or faxed to 909-624-7928; or mailed to: GSGLA Montclair Service Center, 9525 Monte Vista Ave., Montclair, CA 91763 c/o Camp Registration. Please contact your council and request that they share your daughter's membership record with GSGLA.

EXTENDED CARE

Camp hours are 9 a.m. to 4 p.m. Before and After Care is available 7 to 9 a.m. and 4 to 6 p.m. for \$50 per week. If only a.m. or only p.m. care is needed, the cost is \$25 per week. There is no daily rate. **Note: A \$10 late fee will be charged every 15 minutes after 6 p.m.**

SUMMER CAMP LEADERSHIP EXPERIENCE: COUNSELOR-IN-TRAINING (CIT)

NEW THIS YEAR: Girls entering grades 9–12 must have completed Program Aide Training before applying. A Marine Landing CIT orientation is mandatory for girls who will be in the leadership program during the summer camp season. We will offer two sessions: Wednesday, May 18, 3:30–5:30 p.m., and Tuesday, May 24, 3:30–5:30 p.m.

Girls entering grades 9–12 will need to complete additional requirements to become a Counselor-in-Training.

(Marine Landing programs continued)

CIT I Pre-requisites: Must have completed Program Aide Training and complete the online module Daisy Characteristics on gsglaonlinetraining.org.

CIT II Pre-requisite: Must have completed Program Aide Training; CIT I; Daisy, Brownie and Junior Characteristic modules on gsglaonlinetraining.org.

For details on Marine Landing CIT requirements and an application, email jchandler@girlscoutsla.org. All participants in the leadership program will receive a shirt.

SWIMMING EVALUATION

All girls will participate in a swim evaluation on the first day of camp. Girls of all swimming abilities may participate in all camp programming. Life vests are mandatory while boating and available for swimming.

PROGRAM CHANGES

Occasionally, camp programming may change with little or no notice, due to weather. During beach closures, additional land-based programs such as crafts, water games, and special activities will be provided.

MARINE LANDING FAMILY NIGHTS

July 7, 4:30–7 p.m.

July 21, 4:30–7 p.m.

Visit camp and meet the fantastic summer staff! All family members of Marine Landing campers are welcome and are encouraged to bring a picnic dinner. While exploring the different areas of camp, family members age six and older may choose to participate in kayaking. Anyone planning on kayaking must have closed-toe water shoes and clothing that can get wet. **Please note:** You don't have to have a camper attending the week of the Family Nights to come to the open house. Anyone attending a Marine Landing camp over the summer is welcome.

Aloha Summer

June 13–17

Grades 1–3, \$190

Grades 4–8, \$210

Aloha! Escape to the beach and welcome in summer with your Marine Landing *ohana*. Brownies will earn the Making Friends badge as they explore new cultures; Juniors will learn the art of lei-making while earning the Flower badge; and Cadettes will explore the delicious bounty of plants while earning the Tree badge. No week would be complete without our full lineup of swimming and boating activities. So, wear your grass skirt and practice your hula—this luau is going to be a wave of adventure!

Camp Survivor

June 20–24

Grades 1–3, \$190

Grades 4–8, \$210 (Older Girl Evening Program)

Calling all adventurers! Do you have what it takes to survive any situation? Try your skills at Camp Survivor where we will explore the waterways and face fun challenges throughout the week. In addition to boating and swimming, all levels will earn their First Aid badge and leave with new survival skills. **Girls entering fourth grade and above are invited to join us for an extended day at camp that includes dinner and a campfire program.**

Chefs on the Seashore, Session I

June 27–July 1

Grades 1–3, \$190

Grades 4–8, \$210

This is the week for food, fun, and sun! Learn cooking skills, create regional specialties, and discover the simplicity of homemade food. In addition to daily water and boating activities, Brownies will earn the Snacks badge, Juniors will earn the Simple Meals badge, and Cadettes will earn the New Cuisines badge. After heating it up in the kitchen, girls will cool off in the water. This week is always a hit, so reserve your space in the kitchen today!

Art Walk

July 5–8

**Grades 1–3, \$150 Prorated
(Thursday Evening Program)**

**Grades 4–8, \$170 Prorated
(Thursday Evening Program)**

Ever dream of creating your very own masterpiece? How about covering your world in color? Let your imagination run wild while we explore the artist's way with sister Girl Scouts. Our daily water and boating activities will be accompanied by many creative projects as Brownies earn the Painter badge, Juniors earn their Jeweler badge, and Cadettes earn their Comic Artist badge. Campers will be splashing in creativity all week long. **Invite your family to participate in the fun during our gallery show on Family Night, Thursday, July 7.**

GS Summer Olympics

July 11–15

Grades 1–3, \$190

Grades 4–8, \$210

This week we will be our own favorite athletes and challenge ourselves to perform our best! Girls will represent their hometown at the GS Summer Olympics opening ceremonies and throughout the games. In addition to swimming, canoeing, and synchronized swimming, we will invent a few new games like the 16-yard beach ball race, hula hoop-a-thon, and wacky water balloon relay. Brownies will earn the Fair Play badge, Juniors will earn the Practice with Purpose badge, and Cadettes will earn the Good Sportsmanship badge.



GS Got Talent

July 18–22

Grades 1–3, \$190 (Thursday Evening Program)

Grades 4–8, \$210 (Thursday Evening Program)

Girl Scouts are highly talented! Here's your chance to showcase that talent! Enter a world of imagination and self-expression. In addition to daily water and boating activities, Brownies will earn the Dancer badge, Juniors will earn the Musician badge, and Cadettes will earn the Public Speaker badge. Whether you're a star or a starfish, this week will be a swimmingly good time! **Invite your family to our talent show on Family Night, Thursday, July 21.**

It's My Party!

July 25–29

Grades 1–3, \$190

Grades 4–8, \$210 (Older Girl Evening Program)

The title says it all; this week is going to be a party, and you are the guest of honor! In addition to daily water and boating activities, Brownies will earn the My Best Self badge, Juniors will earn the Social Butterfly badge, and Cadettes will earn the Science of Happiness badge. Whether you are the "Hostess with the Mostest," the birthday girl, or just love to have a good time with your Girl Scout sisters, you will have a blast honing your social skills this week.

Girls entering fourth grade and above are invited to join us for an extended day at camp that includes dinner and a campfire program.

Chefs on the Seashore, Session II

Aug. 1–5

Grades 1–3, \$190

Grades 4–8, \$210

This is the week for food, fun, and sun! Learn cooking skills, create regional specialties, and discover the simplicity of homemade food. After heating it up in the kitchen, cool off in the water with boating and swimming activities. Brownies will earn the Snacks badge, Juniors will earn the Simple Meals badge, and Cadettes will earn the New Cuisines badge. This week is always a hit, so reserve your space in the kitchen today!

CSI Marine Landing

Aug. 8–12

Grades 1–3, \$190

Grades 4–8, \$210

Fred, Marine Landing's resident sea lion, has gone missing! Throughout the week we will gather evidence, follow the clues, and use our eagle eyes to trace his moves. Brownies will earn the Senses badge, Juniors will earn the Detective badge, and Cadettes will earn the Secret Agent badge. No week would be complete without our full lineup of swimming and boating activities. So, grab your gear! There's a mystery to solve!





I can't wait to go to

Mariposa!

Mariposa Day Camp, located in Altadena, offers themed weeks with several different emphases from which girls can choose. Girls participate in new and traditional Girl Scout activities while making new friends, developing self-esteem, and making lasting memories. Girls will enjoy our gaga (a kinder, gentler version of dodgeball) court, low ropes elements, and “kids kitchen” cooking activities. The weekly themes provide additional experiences for the campers. Price includes: daily snacks, a commemorative item, badges earned, and a group photo. For more information, contact Brianna Colomb at bcolomb@girlscoutsla.org.

Non-Girl Scout Members: Families of non-Girl Scout members must create an eBiz account and purchase a Girl Scout membership in order to register for camp. To set up an eBiz account or for further assistance, please email the help desk at helpdesk@girlscoutsla.org.

Girl Scouts Registered With Other Councils: Registrations can be submitted in person at your local GSGLA Service Center; or faxed to 909-624-7928; or mailed to: GSGLA Montclair Service Center, 9525 Monte Vista Ave., Montclair, CA 91763 c/o Camp Registration. Please contact your council and request that they share your daughter's membership record with GSGLA.

EXTENDED CARE

Camp hours are 9 a.m. to 4 p.m. Before and After Care is available 7 to 9 a.m. and 4 to 6 p.m. for \$50 per week. If only a.m. or only p.m. care is needed, the cost is \$25 per week. We cannot prorate Before and After Care. There is no daily rate. **Note: A \$10 late fee will be charged every 15 minutes after 6 p.m.**

SUMMER CAMP LEADERSHIP EXPERIENCES: PROGRAM AIDE (PA) AND COUNSELOR-IN-TRAINING (CIT)

Girls entering grades 9–12 will need to complete additional requirements to become a Counselor-in-Training.

CIT I Pre-requisites: Must have completed Program Aide Training and complete the online module Daisy Characteristics on gsglaonlinetraining.org.

CIT II Pre-requisite: Must have completed Program Aide Training; CIT I; Daisy, Brownie and Junior Characteristic modules on gsglaonlinetraining.org.

A Mariposa PA/CIT orientation is mandatory for girls who will be in the leadership program during the summer camp season. We will offer two sessions: May 27, 6–8 p.m. and June 5, 1–3 p.m. at Mariposa Day Camp. For details on Mariposa CIT requirements and an application, email bcolomb@girlscoutsla.org. All participants in the leadership program will receive a shirt.

(Mariposa programs continued)

Draw, Paint, and Create!

June 13–17

Grades K–6, \$170

Discover the exciting world of artistic expression. Play with paints, colored pencils, clay, and other mediums to create masterpieces! Campers will learn about famous artists and hone their artistic skills throughout the week, ending with an art walk on Friday for their family and friends. Daisies will earn the Zinni petal, Brownies will earn the Painting badge, Juniors will earn the Drawing badge, and Cadettes will earn the Book Artist badge.

S'more Fun!

June 20–24

Grades K–3, \$170

Grades 4–6, \$180 (Wednesday Evening Program)

Get back to basics with this week devoted to all your favorite Girl Scout traditions! Learn about outdoor cooking, exchange SWAPs with a new friend, and practice camping skills while exploring the great outdoors. Daisies will earn the Vi petal. Brownies, Juniors, and Cadettes will earn the Girl Scout Way badge. **Girls entering fourth grade and above are invited to an extended day program that includes dinner and a campfire program.**

Stylish Scouts

June 27–July 1

Grades K–6, \$170

Walk the runway with confidence during Mariposa fashion week. Meet industry pros and learn to design your own fashion line. Chic campers will design their own jewelry, bags, T-shirts, and more while learning to maintain a positive self-image. Campers will present their cool creations at a Friday fashion show. Daisies will earn the Gloria petal, Brownies will earn the My Best Self badge, Juniors will earn the Staying Fit badge, and Cadettes will earn the Science of Happiness badge.

Wild Wild West

July 5–8

Grades K–6, \$140 Prorated

Learn the ways of the Wild West as we travel back in time. Try leather working, candle dipping, and square dancing. Plus, learn about local Native American stories and traditions. Bring your straw hat and wear your best boots, because on Friday campers will enjoy an old-fashioned ho-down! Daisies will earn the Sunny petal, Brownies will earn the Making Friends badge, Juniors will earn the Playing the Past badge, and Cadettes will earn the Woodworker badge.

Center Stage

July 11–15

Grades K–6, \$170

Ready to be center stage? Dance through the decades, make your own musical instrument, and get comfortable being in the limelight. Create wacky skits and practice performing in front of an audience. The week ends with a performance for family, friends, and adoring fans! Daisies will earn the Tula petal, Brownies will earn the Dancer badge, Juniors will earn the Musician badge, and Cadettes will earn the Public Speaker badge.

Animal Planet

July 18–22

Grades K–6, \$170

Camp just got a whole lot wilder! We will create animal habitats, learn about what it takes to survive in the wild, and have our famous counselor hunt! We will end the week with a visit from some animal friends. Daisies will earn the Clover petal, Brownies will earn the Pets badge, Juniors will earn the Animal Habitats badge, and Cadettes will earn the Animal Helpers badge.

The Inventor's Laboratory

July 25–29

Grades K–6, \$170

Uncover a world of possibility when we turn camp into a mad scientist's laboratory! Think like engineers and scientists by designing cardboard cars, mini robots, and straw rockets. Create and test your own inventions and meet women engineers to give you inspiration! Daisies will earn the Rosie petal, Brownies will earn the Inventor badge, Juniors will earn the Product Designer badge, and Cadettes will earn the Entrepreneur badge.

Super Scouts!

Aug. 1–5

Grades K–6, \$170

Join our League of Extraordinary Ladies for a week of super fun! Dress like a super hero while testing your agility, cunning, and teamwork through obstacle courses, scavenger hunts, and team building games. Plus, practice first-aid skills, make your own first-aid kits, and meet first responders! Daisies will earn the Safety Award. Brownies, Juniors, and Cadettes will earn First Aid badges.

Let's Get Cooking

Aug. 8–12

Grades K–3, \$170

Grades 4–6, \$180 (Wednesday Evening Program)

Do you like to create tasty treats or creative cupcakes? This camp is for you! Taste food from around the world, learn cooking techniques, and make yummy creations. Units will battle to see who can make the most inventive and delicious meal! Daisies will earn the Mari petal, Brownies will earn the Snacks badge, Juniors will earn the Simple Meals badge, and Cadettes will earn the New Cuisines badge. **Girls entering fourth grade and above are invited to an extended day program that includes dinner and a campfire program.**



I can't wait to go to

La Casita!

Connect with nature at La Casita! Nestled in the foothills of north Claremont, this tranquil five-acre setting is surrounded by 1,600 acres of rolling hills, hiking trails, and bountiful wildlife. This is a great environment for girls to get a taste of camp. Girls are grouped according to age level and assigned to small units for individual activities. Price includes: daily snack, program activities, and a patch. Girls will need to bring a lunch and a reusable water bottle each day. Camp hours are 9 a.m. to 4 p.m. For more information, please contact Deanne Moore, dmoore@girlscoutsla.org.

Extended Care will not be offered for this session.

Non-Girl Scout Members: Families of non-Girl Scout members must create an eBiz account and purchase a Girl Scout membership in order to register for camp. To set up an eBiz account or for further assistance, please email the help desk at helpdesk@girlscoutsla.org.

Girl Scouts Registered With Other Councils: Registrations can be submitted in person at your local GSGLA Service Center; or faxed to 909-624-7928; or mailed to: GSGLA Montclair Service Center, 9525 Monte Vista Ave., Montclair, CA 91763 c/o Camp Registration. Please contact your council and request that they share your daughter's membership record with GSGLA.

PROGRAM AIDE (PA) LEADERSHIP EXPERIENCES

Girls entering grades 7–12 must have completed Program Aide Training prior to the camp session. PAs are assigned to units and work closely with volunteers, staff, and campers. For more information or to request an application, please contact Deanne Moore, dmoore@girlscoutsla.org.

ADULT VOLUNTEERS

Help facilitate a fun and successful camp! One-day and multi-day volunteer opportunities are available. For more information, please contact Deanne Moore, dmoore@girlscoutsla.org.

Survivor Girl

June 20–24

Grades K–6, \$150

Get back to Girl Scout basics by learning outdoor skills that will empower you to travel anywhere in the world. Create memories with new friends in a tent you put up yourself, take a hike through the local hills, and develop your outdoor cooking skills. Daisies will earn the Vi petal, Brownies will earn the Hiking badge, Juniors will earn the Camping badge, and Cadettes will earn the Trailblazer badge.



I can't wait to go to

Specialty Day Camp (Girls Only)

Non-Girl Scout Members: Families of non-Girl Scout members must create an eBiz account and purchase a Girl Scout membership in order to register for camp. To set up an eBiz account or for further assistance, please email the help desk at helpdesk@girlscoutsla.org.

Girl Scouts Registered With Other Councils: Registrations can be submitted in person at your local GSGLA Service Center; or faxed to 909-624-7928; or mailed to: GSGLA Montclair Service Center, 9525 Monte Vista Ave., Montclair, CA 91763 c/o Camp Registration. Please contact your council and request that they share your daughter's membership record with GSGLA.

Peace, Love, and Mother Nature Rocks – Santa Clarita – Girls Only

June 27–July 1

Grades 2–7, \$150

It is getting groovy at William S. Hart Park in Newhall! Learn about nature in fun, creative ways while earning badges, making new friends, and enjoying Girl Scout traditions. Brownies will earn the Pets and Bugs badges, Juniors will earn Animal Habitats and Flowers badges, and Cadettes will earn Animal Helpers and the It's Your Story LiA badges. Campers will also enjoy crafts, songs, snack cooking, hiking, and skits. Girls must bring their sack dinner and refillable water bottle each day.

Price includes: daily snack, reusable water bottle, camp patch, badges earned, and a group photo. Camp hours are 2–7 p.m. For more information, please contact Christine Colvin, ccolvin@girlscoutsla.org.

Program Aide (PA) Leadership Experience: Girls must have completed Program Aide Training prior to the camp session and must be at least incoming eighth graders for the 2016–17 school year. PAs are assigned to units and work closely with volunteers, staff, and campers. For more information or to request an application, please contact Christine Colvin, ccolvin@girlscoutsla.org.

Adult Volunteers:

Help facilitate a fun and successful camp! One-day and multi-day volunteer opportunities are available. For more information, please contact Christine Colvin, ccolvin@girlscoutsla.org.



More Specialty Day Camps →

Nature's Kitchen – Santa Clarita – Girls Only

July 11–July 15

Grades 2–7, \$160

Camp cooking has never been more fun! Join us for five days full of culinary creativity at William S. Hart Park in Newhall. Put your chef skills to the test by making dinner each day using various camp cooking methods. Enjoy crafts, songs, and skits while our meals are roasting to perfection. Girls must bring their own snack and refillable water bottle each day. Each level will earn a cooking-related badge.

Price includes: bandana, camp patch, dinner, earned badges, and a group photo. Camp hours are 2–7 p.m. For more information, contact Christine Colvin, ccolvin@girlscoutsla.org.

Program Aide (PA) Leadership Experience:

Girls must have completed Program Aide Training prior to the camp session and must be at least incoming eighth graders for the 2016–17 school year. PAs are assigned to units and work closely with volunteers, staff, and campers. For more information or to request an application, contact Christine Colvin, ccolvin@girlscoutsla.org.

Adult Volunteers:

Help facilitate a fun and successful camp! One-day and multi-day volunteer opportunities are available. For more information, contact Christine Colvin, ccolvin@girlscoutsla.org

Camp Hollywood – San Fernando Valley – Girls Only

July 18–22

Grades 1–5, \$150

Are you a born performer or director? Explore different styles of music, dance, and theater from classical to contemporary. Create your own instrument, learn fun improvisation games, and meet a special guest from the entertainment industry – all with the beautiful scenic backdrop of Woodley Park for our stage! Each unit will learn two musical numbers (music, lyrics, and choreography) and create props and costume pieces. There will be an end-of-camp performance on Friday! Daisies will earn the Lupe Petal, Brownies will earn the Dancer badge, and Juniors will earn the Musician badge.

Price includes: daily snacks, camp patch, earned badges, and all activities. Camp hours are 9 a.m. to 4 p.m. Extended care will not be offered for this program. For more information, contact Molly Briggs, mbriggs@girlscoutsla.org.

Program Aide (PA) Leadership Experience:

Girls must have completed Program Aide Training prior to the camp session. PAs are assigned to units and work closely with volunteers, staff, and campers. For more information, contact Molly Briggs, mbriggs@girlscoutsla.org.

Adult Volunteers:

Help facilitate a fun and successful camp! One-day and multi-day volunteer opportunities are available. For more information, contact Molly Briggs, mbriggs@girlscoutsla.org



Non-Girl Scout Members: Families of non-Girl Scout members must create an eBiz account and purchase a Girl Scout membership in order to register for camp. To set up an eBiz account or for further assistance, please email the help desk at helpdesk@girlscoutsla.org.

Girl Scouts Registered With Other Councils: Registrations can be submitted in person at your local GSGLA Service Center; or faxed to 909-624-7928; or mailed to: GSGLA Montclair Service Center, 9525 Monte Vista Ave., Montclair, CA 91763 c/o Camp Registration. Please contact your council and request that they share your daughter's membership record with GSGLA.

Camp Surf – Troops Only

June 17–19 Session I

Grades 4–12, \$160 (Girls & Adults)

July 22–24 Session II

Grades 4–12, \$160 (Girls & Adults)

Surf all day and sleep under the stars at night! Troops camp in tents at Imperial Beach (near San Diego) and enjoy introductory surf lessons, archery, a climbing tower, body boarding, or simply relaxing on the beach. Grab some sunscreen, wax a board, and catch the waves! Ability to swim face down in deep water is required.

Weather may impact the ability to run the regularly scheduled activities. We may need to stop activities if there is lightning or fog during your stay or heavy rain during or prior to your stay. Heavy rain may result in the San Diego County Department of Environmental Health issuing beach closures due to run-off or pollution. Occasionally a scheduled activity is unable to be conducted; if so, other staff-led activities will be scheduled, and there are many different free-time activities and facilities to enjoy. **We do not offer refunds or credits to groups if certain activities are canceled.**

Price includes: campsite, all activities, meals, snacks, and introductory surf instruction. Transportation and camping supplies (tents, sleeping bags, etc.) are not provided. For more information, please contact Lisa Axelrod, laxelrod@girlscoutsla.org.

Island of the Blue Dolphins – Girls Only

July 7–9 Session I

Grades 7–12, \$305

Enjoy an action-packed weekend of exploring the Channel Islands by kayak, snorkel, and hiking boots! While kayaking, discover beautiful and mysterious sea caves and kelp forests abundant with marine life. Snorkel amongst rare, protected marine species and hike to breathtaking peaks, all while learning about the history and geology of the islands. Camp in tents under the night sky and let the stars guide your dreams. This is a chance to explore history, discover a new world, and challenge yourself to try new adventures!

Price includes: round-trip boat transportation, campsite, kayaks (lessons and gear), snorkeling equipment, meals, snacks, patch, and knowledgeable island guides. It is recommended that participants are comfortable with ocean swimming. Excursion departs from and returns to Ventura Harbor. For more information, please contact Elizabeth Chadwick, echadwick@girlscoutsla.org.

Rock N' Roll Robots Weekend Summer Camp – Montrose – Girls Only*

Aug. 5–7

Grades 8–12, \$125

Mentors*, \$50

A weekend overnighter with everything you love about Girl Scouts, plus robots! Game strategy, robot design building, re-building, programming, re-programming, completion, judging—the Rock N' Roll Robots (RNRR) have seen it all. And they've created a camp for you! Activities include building and programming a robot, competing in a mini-tournament, learning about FIRST Tech Challenge (FTC) robotics, bonding with future FTC teammates and mentors, and more! Though it's not required, bring your mentors (adult volunteers)! Starting a new FTC team? RNRR mentors are happy to provide guidance and training for technical and non-technical mentors.

Price includes: all meals for Saturday and Sunday, training binder, and supplies. Camp starts at 5 p.m. on Friday and ends at 5 p.m. on Sunday. Participants **MUST** commit to attending and participating all camp days. Health Information, Consent for Treatment/Waiver, and Photo Release Forms must be completed. Please bring dinner for Friday night, and a snack to share, as well as personal supplies for a two-night overnighter. Appropriate clothing and shoes are required (close-toed shoes, accessories to tie back long hair). Must bring a sleeping bag and pad, for sleeping indoors on hard tile floor. For more information, please contact Kristen Simon, ksimon@girlscoutsla.org.

Ocean Fun on Catalina Island – Girls or Troops
Sept. 9–11

Grades 4–12, \$220 (Girls & Adults)

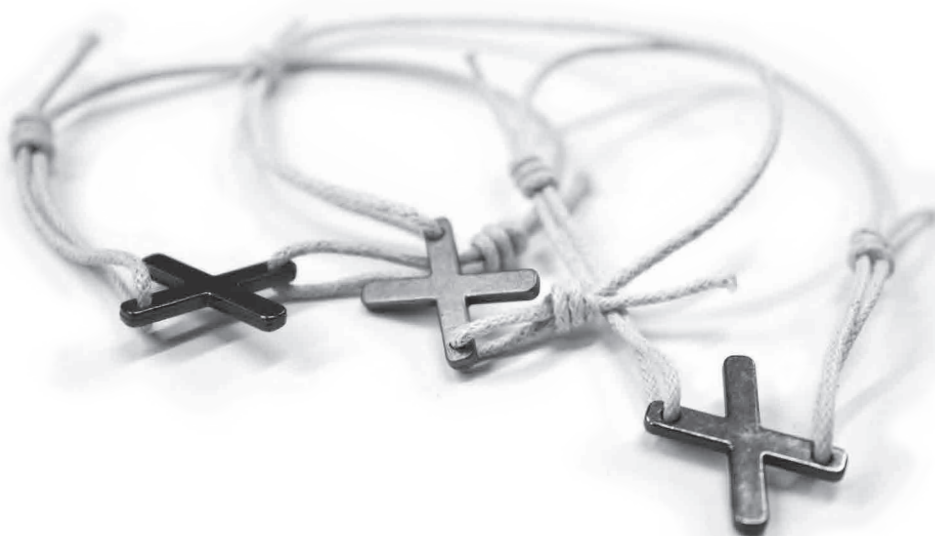
Grades 9–12, \$160 (Program Aide Leadership Experience)

Ready for a weekend of island fun? This is an exciting opportunity to kayak, snorkel, swim, learn about marine life, and accomplish badge work in a beautifully preserved area of Catalina Island. Plus, show off your talent in a center stage campfire performance on Saturday night. Troops are welcome to plan their own additional programs to include sports, hiking, and beachcombing.

This is a troop and independent girl's event. Girl/adult ratio will be in accordance with Safety Wise standards that can be found in *2015–16 Volunteer Essentials*. The camp is based out of Howland's Landing on Catalina Island, near Two Harbors. Participants must use our transportation. Special arrangements cannot be made. A troop roster of all attending is required.

Price includes: round-trip boat transportation, waterfront programs, accommodations, patch, and all meals. Transportation details will be emailed to participants closer to the departure date. For more information, please contact Brianna Colomb, bcolomb@girlscoutsla.org.

Program Aide (PA) Leadership Experience:
Girls must have completed Program Aide Training prior to the camp session. PAs are assigned to work closely with staff and campers. For more information or to request an application, please contact Brianna Colomb, bcolomb@girlscoutsla.org.



SPECIALTY OVERNIGHT CAMP (FAMILIES OR TROOPS)

Non-Girl Scout Members: Families of non-Girl Scout members must create an eBiz account and purchase a Girl Scout membership in order to register for camp. To set up an eBiz account or for further assistance, please email the help desk at helpdesk@girlscoutsla.org.

Girl Scouts Registered With Other Councils: Registrations can be submitted in person at your local GSGLA Service Center; or faxed to 909-624-7928; or mailed to: GSGLA Montclair Service Center, 9525 Monte Vista Ave., Montclair, CA 91763 c/o Camp Registration. Please contact your council and request that they share your daughter's membership record with GSGLA.

Island of the Blue Dolphins –

Families or Troops

July 29–31 Session II

Grades 7–12, \$305 (Girls & Adults)

Enjoy an action-packed weekend of exploring the Channel Islands by kayak, snorkel, and hiking boots! While kayaking, discover beautiful and mysterious sea caves and kelp forests abundant with marine life. Snorkel amongst rare, protected marine species and hike to breathtaking peaks, all while learning about the history and geology of the islands. Camp in tents under the night sky and let the stars guide your dreams. This is a chance to explore history, discover a new world, and challenge yourself to try new adventures!

Price includes: round-trip boat transportation, campsite, kayaks (lessons and gear), snorkeling equipment (not including wetsuit), meals, snacks, patch, and knowledgeable island guides. It is recommended that participants are comfortable with ocean swimming. Excursion departs from and returns to Ventura Harbor. For more information, please contact Elizabeth Chadwick, echadwick@girlscoutsla.org.

Family Camp at Osito Rancho –

Families or Troops

Aug. 19–21 Session I

Aug. 26–28 Session II

All Ages, \$140 (per person ages 4 years and up, no cost for children under 4 years)

Enjoy the magic of Camp Osito Rancho located in Big Bear for your next Girl Scout family vacation! Participate in a variety of activities, including horse trail riding for fourth grades and older, and horse lessons for second- and third-graders. Plus, there is swimming, archery, canoeing, a ropes course, and a zip line (restricted to grades 8 and older with a weight restriction of 80–250 lbs). At the end of the day, make s'mores and sing around the campfire. Most activities have age restrictions of six years and above, but there is a game area and heated pool for younger family members. (Please note: The terrain is rugged and at an elevation of 7,500 feet.)

Price includes: staff-led program activities, meals, and lodging in platform tents with cots. All facilities have hot and cold running water, flush toilets, and showers. Please note: Adults must accompany their children at all times. For more information, please contact Kalie Brisbon, kbrisbon@girlscoutsla.org.

Osito Rancho Resident Camp –

Work Party Weekends

June 3–5 Session I

Grades 2–12, \$10

Sept. 9–11 Session II

Grades 2–12, \$10

Your help is needed in June to get camp ready for the summer and in September to get camp ready for the winter. Families, troops, groups, or individuals may register. There is something for everyone to do. Work party weekends are an opportunity to get outside and work in one of the most beautiful places in the San Bernardino Mountains. Join us at Camp Osito Rancho and participate in projects that will improve our camp. GSGLA will provide helpers with a place to sleep and good healthy meals to keep you going. Many projects are labor-intensive; however, only enthusiasm is required.

Price includes: either dormitory-style lodging or platform tents (cots included), and meals. All facilities have hot and cold running water, flush toilets, and showers. For more information, please contact Kalie Brisbon, kbrisbon@girlscoutsla.org.

Marine Landing, Mariposa and El Ranchito Day Camp Registration Form

2016

CAMPER INFORMATION: (please type or print)

Camper First and Last Name _____ Is Camper "Out of Council"? ☐ YES ☐ NO
(not with GSGLA)

Address _____ City _____ State _____ Zip Code _____

Phone _____ Email (please be sure to provide an email you actively use) _____

Age _____ DOB (MM/DD/YYYY) _____ Current Grade _____ Troop _____ Girl Scout Council (if not GSGLA) _____

Camp Buddy Request (Optional): _____

Name ONE girl your camper would like to be grouped with. Both campers must request each other. Requests are not guaranteed.

PARENT/GUARDIAN INFORMATION:

(1) Parent/ Guardian Name _____ Home Phone _____ Cell Phone _____

Address _____ City _____ State _____ Zip Code _____

(2) Parent /Guardian Name _____ Home Phone _____ Cell Phone _____

Address (if different) _____ City _____ State _____ Zip Code _____

EMERGENCY CONTACT:

Emergency Contact Name _____ Phone _____ Relationship to Camper _____

CAMP SESSION SELECTION:

Check off the location for each camp listed			Name of Camp Session	Camp Date	Camp Fee	Weekly Extended Care (optional)		Subtotal
ER	MP	ML				AM (\$25)	PM (\$25)	
<input type="checkbox"/>	<input type="checkbox"/>	<input type="checkbox"/>	_____	_____	_____	_____	_____	_____
<input type="checkbox"/>	<input type="checkbox"/>	<input type="checkbox"/>	_____	_____	_____	_____	_____	_____
<input type="checkbox"/>	<input type="checkbox"/>	<input type="checkbox"/>	_____	_____	_____	_____	_____	_____
<input type="checkbox"/>	<input type="checkbox"/>	<input type="checkbox"/>	_____	_____	_____	_____	_____	_____
Add one-time \$15.00 fee if NOT a Girl Scout								\$ _____
TOTAL								\$ _____

PERMISSION:

As legal guardian, I give permission for the above girl to attend camp and participate in all activities, for her to be transported out of camp during the camp session for programs and other purposes, and for emergency treatment to be given to her in case of injury or illness, unless otherwise stated. **I understand that if she is not currently a registered Girl Scout, an additional one-time \$15.00 membership fee will be applied to the overall cost of camp.**

X
Parent/Guardian Signature _____ Date _____

☐ Check here if you **DO NOT** authorize GSGLA to use images of camper for promotion of Girl Scouts.

✓ PAYMENT (Check one):

☐ \$50.00 DEPOSIT (PER SESSION) or ☐ TOTAL AMOUNT
FOUR WEEKS PRIOR TO START OF CAMP(S) BALANCE IS DUE INFULL, OR CAMPER'S REGISTRATION WILL BE CANCELED. DEPOSITS ARE NON-REFUNDABLE & NON-TRANSFERABLE.

✓ PAYMENT METHOD (Check one):

☐ Camper has applied for financial aid before **May 6, 2016** deadline — **Family Contribution** \$ _____

☐ Check # _____ (payable to Girl Scouts of Greater Los Angeles) is attached

☐ Charge to credit card ☐ Visa ☐ MasterCard ☐ AmEx ☐ Discover

Cardholder Name _____ Credit Card _____ Exp Date _____ CVV # _____ X
Cardholder Signature _____

1/2016

Osito Rancho Resident Camp Registration Form

2016

CAMPER INFORMATION: (please type or print)

Is Camper "Out of Council"? ☐ YES ☐ NO
(Not with GSGLA)

Camper First and Last Name _____

Address _____ City _____ State _____ Zip Code _____

Phone _____ Email (please be sure to provide an email you actively use) _____

Age _____ DOB (MM/DD/YYYY) _____ Current Grade _____ Troop _____ Girl Scout Council (if not GSGLA) _____

Camp Buddy Request (Optional):

Name ONE girl your camper would like to be grouped with. Both campers must request each other. Requests are not guaranteed.

PARENT/GUARDIAN INFORMATION:

(1) Parent/ Guardian Name _____ Home Phone _____ Cell Phone _____

Address _____ City _____ State _____ Zip Code _____

(2) Parent/Guardian Name _____ Home Phone _____ Cell Phone _____

Address (if different) _____ City _____ State _____ Zip Code _____

EMERGENCY CONTACT:

Emergency Contact Name _____ Phone _____ Relationship to Camper _____

CAMP OSITO-RANCHO SESSION SELECTION:

Session Number	Camp Title	Date of Camp	Camp Fee	Subtotal
①	_____	_____	_____	_____
②	_____	_____	_____	_____
Add one-time \$15.00 fee if NOT a Girl Scout				\$ _____
TOTAL				\$ _____

✓ BUS DROP-OFF/PICK-UP LOCATION (Check one):

Camp fees include bus transportation to and from Camp Osito-Rancho. Please select the most convenient drop-off/pick-up location. **We cannot accommodate interchanging the methods of transportation.** Transportation to and from camp must stay consistent.

<input type="checkbox"/> Arcadia Service Center 101 E Wheeler Ave Arcadia, CA 91006	<input type="checkbox"/> Long Beach Service Center 4040 N Bellflower Blvd Long Beach, CA 90808	<input type="checkbox"/> Woodland Hills Service Center 20931 Burbank Blvd, Ste A Woodland Hills, CA 91367	<input type="checkbox"/> Camp Osito Rancho Parent /Guardian will be responsible for driving their camper to and from camp.
---	--	---	---

PERMISSION:

As legal guardian, I give permission for the above girl to attend camp and participate in all activities, for her to be transported out of camp during the camp session for programs and other purposes, and for emergency treatment to be given to her in case of injury or illness, unless otherwise stated. **I understand that if she is not currently a registered Girl Scout, an additional one-time \$15.00 membership fee will be applied to the overall cost of camp.**

X
Parent/Guardian Signature _____ Date _____

☐ Check here if you DO NOT authorize GSGLA to use images of camper for promotion of Girl Scouts.

✓ **PAYMENT (Check one):** ☐ \$125.00 DEPOSIT (PER SESSION) or ☐ TOTAL AMOUNT
 FOUR WEEKS PRIOR TO START OF CAMP(S) BALANCE IS DUE IN FULL, OR CAMPER'S REGISTRATION WILL BE CANCELED. DEPOSITS ARE NON-REFUNDABLE & NON-TRANSFERABLE.

✓ PAYMENT METHOD (Check one):

☐ Camper has applied for financial aid before **May 6, 2016** deadline — **Family Contribution** \$ _____

☐ Check # _____ (payable to Girl Scouts of Greater Los Angeles) is attached

☐ Charge to credit card. ☐ Visa ☐ MasterCard ☐ AmEx ☐ Discover

Cardholder Name _____ Credit Card _____ Exp Date _____ CVV # _____ X
 Cardholder Signature _____

Specialty Camp Registration Form 2016

CAMPER INFORMATION: (please type or print)

Camper First and Last Name				Is Camper "Out of Council" <input type="checkbox"/> YES <input type="checkbox"/> NO (Not with GSGLA)	
Address		City		State	Zip Code
Phone		Email (please be sure to provide an email you actively use)			
Age	DOB (MM/DD/YYYY)	Current Grade	Troop	Girl Scout Council (if not GSGLA)	
Camp Buddy Request (Optional):					
Name <u>ONE</u> girl your camper would like to be grouped with. Both campers must request each other. Requests are not guaranteed.					

PARENT/GUARDIAN INFORMATION:

(1) Parent/ Guardian Name		Home Phone		Cell Phone	
Address	City	State	Zip Code		
(2) Parent/Guardian Name		Home Phone		Cell Phone	
Address (if different)	City	State	Zip Code		

EMERGENCY CONTACT:

Emergency Contact Name	Phone	Relationship to Camper
------------------------	-------	------------------------

CAMP SESSION SELECTION:

Camp Property Name	Name of Camp Session	Camp Date	Camp Fee	Subtotal
1				
2				
Add one-time \$15.00 fee if <u>NOT</u> a Girl Scout				
TOTAL				\$

PERMISSION:

As legal guardian, I give permission for the above girl to attend camp and participate in all activities, for her to be transported out of camp during the camp session for programs and other purposes, and for emergency treatment to be given to her in case of injury or illness, unless otherwise stated. **I understand that if she is not currently a registered Girl Scout, an additional one-time \$15.00 membership fee will be applied to the overall cost of camp.**

X Parent/Guardian Signature	Date
<input type="checkbox"/> Check here if you <u>DO NOT</u> authorize GSGLA to use images of camper for promotion of Girl Scouts.	

<input checked="" type="checkbox"/> PAYMENT (Check one):	<input type="checkbox"/> TOTAL AMOUNT REQUIRED	Deposits are not accepted for Specialty Camps. Total Amount of payment is required.
---	---	--

☒ PAYMENT METHOD (Check one):

<input type="checkbox"/> Camper has applied for financial aid before May 6, 2016 deadline — Family Contribution \$	
<input type="checkbox"/> Check # _____ (payable to Girl Scouts of Greater Los Angeles) is attached	
<input type="checkbox"/> Charge to credit card. <input type="checkbox"/> Visa <input type="checkbox"/> MasterCard <input type="checkbox"/> AmEx <input type="checkbox"/> Discover	

Cardholder Name	Credit Card	Exp Date	CVV #	X Cardholder Signature
-----------------	-------------	----------	-------	---------------------------

1/2016

FINANCIAL AID CAMPSHIP APPLICATION

2016

APPLICATION SUBMISSION DEADLINE: May 6, 2016
INCOMPLETE APPLICATIONS WILL NOT BE CONSIDERED

PAGE 1 OF 2

PAGE 1 OF 2

Please type or print. Complete *only* if applying for financial assistance. Camperships provide financial assistance for girls who cannot otherwise afford a camping experience. Campership funds are made possible by donations. **Each applicant will be considered for one resident/specialty camp or two day camps.** Camperships vary in amount and may not cover the entire cost of a camp(s).

If you have any questions regarding a campership you may contact Camp Registration at 626 677-3600 or by email campregistration@girlscoutsla.org.

Por favor escriba con letra de molde en los dos lados de esta aplicación. Hay fondos disponibles para becas gracias a donaciones. Las becas ofrecen ayuda financiera a las niñas que no tienen los medios para asistir al campamento. Cada niña es considerada para un campamento de residencia/especialidad o dos campamento de día. Las becas varían en cantidad y no necesariamente cubren el costo completamente de campamento. Préstamos están disponibles para los que han solicitado asistencia financiera pero no cualifican. Candidatos serán notificado si éste es una opción.

CAMPER INFORMATION/ INFORMACION DE LA NIÑA:

Camper First and Last Name/Nombre y Apellido de la Niña

Telephone/Teléfono

Address/Domicilio

City/Ciudad

Zip Code/Código Postal

Email/Correo Electrónico

PARENT/GUARDIAN INFORMATION/ INFORMACION DE LOS PADRES:

Parent/ Guardian Name/Nombre de Padre o Guardián

Telephone/Teléfono

Address/Domicilio

City/Ciudad

Zip Code/ Código Postal

Total number of people in household (including camper)/Numero total de personas que usted mantiene en casa (incluyendo la campista):

Ages of dependent children/Edades de los niños:

Total yearly household income not including social service aid/Ingreso anual total de la familia sin contar la asistencia pública:

\$

Parent/ Guardian occupation/Oficio(s) de los padres o tutores:

Does your family receive social service aid?/

¿Recibe a su familia asistencia social?

☐ Yes/Sí

☐ No/No

If currently receiving aid, write in the 11 digit case number/Si recibe asistencia social por favor escriba los 11 números de su caso:

CAMPER HISTORY/HISTORIA DEL CAMPISTA:

Has your camper attended camp before?/¿Ha asistido su campista a algún campamento anteriormente?

☐ Yes/Sí

☐ No/No

Date/Fecha:

Did she receive a campership?/¿Recibió una beca?

☐ Yes/Sí

☐ No/No

If yes, what type?/Si contesto que sí ¿qué tipo?

☒ **THE FOLLOWING MUST BE ANSWERED FOR CONSIDERATION/EL SIGUIENTE DEBE SER CONTESTADO PARA CONSIDERACIÓN:**

- Dollar Amount family will contribute to camp costs/

La cantidad en dólares que su familia va a contribuir al costo:

\$

THIS PAYMENT MUST BE PROVIDED AT TIME OF REGISTRATION!
¡ESTE PAGO DEBE SER DADO EN EL MOMENTO DE INSCRIPCIÓN!

- Amount requested for financial assistance/¿Cuánto solicita para asistencia financiera?

\$

PARENT/GUARDIAN SIGNATURE/FIRMA:

Parent/Guardian Signature/Firma de Padres o Guardián

Date/Fecha

IMPORTANT! COMPLETE THE OTHER SIDE OF THIS FORM./¡IMPORTANTE! LLENE EL OTRO LADO DE ESTA SOLICITUD.

Page 1 of 2

Girl Scouts of Greater Los Angeles • 9525 Monte Vista Ave. • Montclair, CA 91763 • Phone (626) 677-3600 • Fax (909) 624-7928 • www.girlscoutsla.org

Page 1 of 2

Camp Guide 29

FINANCIAL AID CAMPSHIP APPLICATION

2016

APPLICATION SUBMISSION DEADLINE: May 6, 2016

PAGE 2 OF 2

INCOMPLETE APPLICATIONS WILL NOT BE CONSIDERED

PAGE 2 OF 2

Please provide complete responses for all the questions below. Your responses will help us provide information to funding sources.
Es importante que responda por completo a todas las preguntas. Favor de dar detalles. Sus respuestas nos ayudarán a proporcionar información a fuentes de apoyo económico. Su nombre no se incluirá en la información que se envía a los patrocinadores.

Why does your child need financial assistance?/ ¿Por qué necesita su niña asistencia financiera?

Describe any problems (physical or emotional) or any tragic or traumatic event the child or family has encountered that impacts the need to request financial assistance./ ¿Ha sufrido la niña o la familia alguna tragedia o evento traumático, algún problema físico o emocional?

What are the child's positive qualities (initiative, determination, school involvement, helps at home, work skills)?/ ¿Qué cualidades positivas demuestra la niña (la iniciativa, la determinación, se distingue en sus estudios, ayuda en la casa, habilidades de trabajo)?

How will the child benefit from the camp experience?/ ¿Cómo puede beneficiar la niña de la oportunidad de participar en el campamento?



SUBMISSION INSTRUCTIONS:

Mail completed forms, 2015 proof of income for all contributing members of the household, family contribute, and camp registration to: Girl Scouts of Greater Los Angeles, 9525 Monte Vista Ave, Montclair, CA 91763, C/O FA-Camp, or fax to (909) 624-7928 **before May 6, 2016.**

*Los padres o los tutores deben llenar esta solicitud si asistencia financiera es necesaria. Envíe la solicitud, prueba de ingresos, cantidad que su familia puede contribuir al costo de campamento y la registración de campamento a: Girl Scouts of Greater LA, Camp Registrar, 9525 Monte Vista Ave., Montclair, CA 91763, C/O Camp Registrar, o fax a (909) 624-7928 **antes de Mayo 6, 2016.** Se requiere comprobante de ingresos (declaración de impuestos de el año 2015 o talón de cheque reciente de cada miembro que contribuye en la casa).*

1/2016

IMPORTANT! USE ADDITIONAL SHEETS IF NECESSARY. /IMPORTANTE! USE HOJAS ADICIONALES SI ES NECESARIO.

Page 2 of 2

Rules of acceptance and participation in the program are the same for everyone without regard to race, color, ethnicity, creed, national origin, age, socioeconomic or special needs status, providing program and membership requirements are met. *Las reglas para admisión y participación en el programa de campamento son las mismas para todos sin considerar la raza, el color, el grupo étnico, las creencias, el origen nacional, la edad, el estado socioeconómico, ni alguna necesidad especial con tal de que cumpla con los otros requisitos del programa, y sea miembro de las Girl Scouts.*

Girl Scouts of Greater Los Angeles • 9525 Monte Vista Ave. • Montclair, CA 91763 • Phone (626) 677-3600 • Fax (909) 624-7928 • www.girlscoutsla.org

IMPORTANT! COMPLETE THE OTHER SIDE OF THIS FORM./¡IMPORTANTE! LLENE EL OTRO LADO DE ESTA SOLICITUD.

PROGRAM GUIDE



General Information

Girl Scouts of Greater Los Angeles programs through September 2016 are listed in this program guide section. Registration open and close dates all vary per program. You must register at least two weeks prior to each event. All information is subject to change—specifically, all leadership workshops are subject to time and location changes. Registration is available through the online program calendar unless otherwise noted.

Find event and program details at girlscoutsla.org under the "Events" tab. Check the program calendar frequently, as pop-up programs are often added throughout the year. Stay up to date on the latest program information by signing up for GSGLA's various monthly e-newsletters.

NOTE: Camperships do not apply for any of these programs. Camperships are only for summer camp programs, which are listed on pages 9-25.

GS LEVEL KEY

- D** DAISY
- B** BROWNIE
- J** JUNIOR
- C** CADETTE
- S** SENIOR
- A** AMBASSADOR



I can't wait for

April!

GOLD AWARD WORKSHOPS

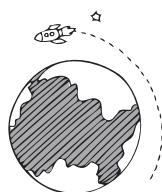
April 6, 4–6 p.m. Palmdale Service Center

April 19, 6–8 p.m. Long Beach Service Center

April 19, 6:30–8:30 p.m. Arcadia Service Center

Grades 9–12 (\$12 registered girl, \$7 registered adult, \$25 non-registered girl/adult)

Prerequisite for the Gold Award. All new for the 2015–16 program year! Trainers will guide you through a new interactive workshop to discover the requirements for a Gold-worthy project, how to choose a project, and how to design that project to be measurable and sustainable. The workshop covers the new online Go Gold proposal process, booking your interview, executing the project, and pre- and post-paperwork and scrapbooking. Girls should be near completion of their pre-requisites (within three months) to attend and ready to submit their proposal within the program year (Oct. 1, 2015–Sept. 30, 2016). Leaders, advisors, and parents are encouraged to attend. **It is highly recommended to retake this workshop if you have not yet submitted your proposal and took your workshop before Aug. 1, 2015.**



SILVER AWARD WORKSHOPS

April 5, 6–8 p.m. Long Beach Service Center

April 12, 4–6 p.m. Santa Clarita Service Center

Grades 6–8 (\$10 registered girl, \$5 registered adult, \$20 non-registered girl/adult)

All new for the 2015–16 program year! Join us for a fun and interactive workshop where girls will discover what is necessary to create an amazing Silver Award Take Action project. Learn how to identify a community need and how to address that need by sharing your skills and passions to help make the world a better place! This workshop is not required to achieve your Silver Award; however, it is very useful in learning the steps, how to submit your final report, and addressing any questions. This workshop is for Cadette Girl Scouts and their leaders. (The Silver Award is a troop leader-approved award program.)

MALL MADNESS WINTER WONDERLAND

April 23–24, Overnight

Grades 4–12 (\$35 registered girl, \$47 non-registered girl, \$20 adult)

Montclair Plaza Mall

Ice crystals dance and snowflakes prance—escape with us for a fun night of winter wonderland intrigue! Girl Scouts will be whisked away to a land filled with music, crafts, games, and more. Throughout the night girls can participate in a flurry of frosty festivities. There's a chill in the air, so make sure to dress in your most (Girl Scout-appropriate) winter wonderland fashions.



GATHERING OF ALL MARINERS (GAM) (S) (A)

April 29–May 1 (Overnight)

Grades 9–12 (Price TBD)

Cabrillo Beach Youth Center, San Pedro

A long-standing Girl Scout tradition, GAM is an exciting weekend-long mariner and water skills competition in which girls from all over greater LA put their watercraft, swimming, and mariner skills to the test! All girls will receive their own copy of the *Gam-O-Gram*, which has all the information they need to know to compete against past goals or set new ones. This is a troops-only event; however, troops are welcome to combine into one unit when participating.

PROGRAM AIDE TRAINING (C) (S) (A)

April 9, 9:30 a.m.–3 p.m. Palmdale Service Center

April 23, 10 a.m.–4 p.m. Woodland Hills Service Center

April 30, 9:30 a.m.–3 p.m. Montclair Service Center

Grades 6–12 (\$20 registered girl)

Be a role model and deepen your understanding of leadership development! Program aides guide younger girls to be leaders in their own lives and in the world. The training helps girls gain skills needed to work with younger girls, peers, and adult volunteers. Program aides may put their skills into practice at council programs, summer programs, and at troop- and service unit-led events. This training is a prerequisite for all Cadettes wishing to complete the Program Aide Award. It is recommended that girls complete the LiA during sixth grade and attend Program Aide Training in seventh grade. The training will last five and a half hours with a 30-minute break for lunch. Please bring a sack lunch and a refillable water bottle. **Note:** Summer camp PAs have additional requirements. Please check the camp guide (pages 9–25) for more information. Older girls wishing to participate in council programs as PAs must take this training even if they no longer qualify to achieve the award.

FEED YOUR NEIGHBOR FOOD DRIVE & SERVICE DAY (D) (B) (J) (C) (S) (A)

April 30

All Service Centers

Help Girl Scouts in the fight against hunger! Participate in the Feed Your Neighbor Food Drive & Service Day, learn about the hunger crisis, and do something about it. Visit girlscoutsla.org for more information—like how to sign up for a Girl Scout food drive booth in front of a local grocery store or how to join our GSGLA Service Squad and volunteer at the food bank.



MARINE LANDING (B) (J) (C) (S) (A) OUTDOOR ADVENTURE DAY

May 1, 9 a.m.–5 p.m.

Grades 2–12 (\$60 registered girl, \$65 non-registered girl, \$60 adult)

Marine Landing, Long Beach

It's Sunday Fun Day on the water! Splash around on the beach, paddle on a kayak or canoe, and swim to your heart's content. With Mother's Day just a week away, you will also have the opportunity to make a very special craft with her in mind. This is a great program for both troops and "Mom and Me's."

STARGAZING & STORYTELLING (J) (C)

May 14–15 (Overnight)

Grades 4–7 (\$45 registered girl, \$60 non-registered girl, \$45 adult)

La Casita Program Center, Claremont

Join GSGLA for an unforgettable overnight! Gaze at the stars and learn the legends about constellations! Special guest speakers will regale the girls with their knowledge and inform them of all the different careers that relate to astronomy and space exploration. Each girl will receive a fun patch, late-night s'mores, and breakfast the next morning. Bring your warm clothes and sleeping bags—girls will sleep under the stars.

ADVENTURE INTO THE GREAT OUTDOORS: SESSION I (J) (C) (S) (A)

May 13–15 (Overnight)

Grades 2–12 (\$110 registered girl, \$120 non-registered girl, \$110 adult)

Camp Osito Rancho, Big Bear

Escape the city life and enjoy a weekend full of adventures, exploring the great outdoors. Your adventure may include conquering the rock wall, or canoeing around the pond. Enjoy all camp has to offer as you take on this adventure and build memories to last a lifetime.

I can't wait for

May! (cont'd)

GOLD AWARD WORKSHOP (S A)

May 17, 6–8 p.m. Marina Del Rey Service Center

May 19, 4–6 p.m. Santa Clarita Service Center

May 21, 9:30–11:30 a.m. Johnstone Program Center

May 24, 6:30–8:30 p.m. Arcadia Service Center

May 24, 4–6 p.m. Woodland Hills Service Center

Grades 9–12 (\$12 registered girl, \$7 registered adult, \$25 non-registered girl/adult)

Prerequisite for the Gold Award. All new for the 2015–16 program year! Trainers will guide you through a new interactive workshop to discover the requirements for a Gold-worthy project, how to choose a project, and how to design that project to be measurable and sustainable. The workshop covers the new online Go Gold proposal process, booking your interview, executing the project, and pre- and post-paperwork and scrapbooking. Girls should be near completion of their pre-requisites (within three months) to attend and ready to submit their proposal within the program year (Oct. 1, 2015–Sept. 30, 2016). Leaders, advisors, and parents are encouraged to attend. **It is highly recommended to retake this workshop if you have not yet submitted your proposal and took your workshop before Aug. 1, 2015.**

MARINE LANDING (B J C S A) OUTDOOR ADVENTURE DAY

May 21, 9 a.m.–5 p.m.

Grades 2–12 (\$60 registered girl, \$65 non-registered girl, \$60 adult)

Marine Landing, Long Beach

Can't wait for summer? Join us for a sneak peak of day camp at Marine Landing! Paddle out in our kayaks and canoes, swim and build sand castles, and have some old-fashioned Girl Scout fun! This is a great program for both troops and "Mom and Me's." Beat the heat with a fun and exciting day on the bay!

DAISY DAY (D)

May 21, Time TBA

Grades K–1 (\$25 registered girl, \$30 non-registered girl, \$10 adult)

Camp Lakota, Frazier Park

Calling all Daisy Girl Scouts for a fun day in the sun! Join us at beautiful Camp Lakota in Frazier Park. Enjoy doing arts and crafts, singing songs, and learning awesome Girl Scout traditions with Cadette Girl Scouts!

ADVENTURE IS OUT THERE (D B J C S A)

May 22, 9:30 a.m.–4:30 p.m.

Grades K–12 (\$65 registered girl, \$70 non-registered girl, \$65 adult)

El Ranchito, Long Beach

Escape everyday life and experience a day of El Ranchito adventure! Participate in team building on our low ropes course, hands-on arts and crafts, gaga games (a kinder, gentler version of dodgeball) and so much more! Challenge yourself on our premier archery range and 34-ft climbing tower.

SILVER AWARD WORKSHOPS (C)

May 3, 6–8 p.m. Marina Del Rey Service Center

May 3, 6–8 p.m. Johnstone Program Center

May 24, 4–6 p.m. Woodland Hills Service Center

Grades 6–8 (\$10 registered girl, \$5 registered adult, \$20 non-registered girl/adult)

All new for the 2015–16 program year! Join us for a fun and interactive workshop where you will discover what is necessary to create an amazing Silver Award Take Action project. Learn how to identify a community need and how to address that need by sharing your skills and passions to help make the world a better place! This workshop is not required to achieve your Silver Award; however, it is very useful in learning the steps, how to submit your final report, and addressing any questions. This workshop is for Cadette Girl Scouts and their leaders. (The Silver Award is a troop leader-approved award program.)

PROGRAM AIDE TRAINING (C S A)

May 21, 10 a.m.–3:30 p.m. Santa Clarita Service Center

May 21, 9:30 a.m.–3 p.m. Arcadia Service Center

Grades 6–12 (\$20 registered girl)

Be a role model and deepen your understanding of leadership development! Program aides guide younger girls to be leaders in their own lives and in the world. The training helps girls gain skills needed to work with younger girls, peers, and adult volunteers. Program aides may put their skills into practice at council programs, summer programs, and at troop- and service unit-led events. This training is a prerequisite for all Cadettes wishing to complete the Program Aide Award. It is recommended that girls complete the LiA during sixth grade and attend Program Aide Training in seventh grade. The training will last five and a half hours with a 30-minute break for lunch. Please bring a sack lunch and a refillable water bottle. **Note:** Summer camp PAs have additional requirements. Please check the camp guide (pages 9–25) for more information. Older girls wishing to participate in council programs as PAs must take this training even if they no longer qualify to achieve the award.



I can't wait for

June & July!

GOLD AWARD WORKSHOP

June 14, 6–8 p.m. Long Beach Service Center

June 18, 9:30–11:30 a.m. Johnstone Program Center

June 21, 6:30–8:30 p.m. Arcadia Service Center

Grades 9–12 (\$12 registered girl, \$7 registered adult, \$25 non-registered girl/adult)

Prerequisite for the Gold Award. All new for the 2015–16 program year! Trainers will guide you through a new interactive workshop to discover the requirements for a Gold-worthy project, how to choose a project, and how to design that project to be measurable and sustainable. The workshop covers the new online Go Gold proposal process, booking your interview, executing the project, and pre- and post-paperwork and scrapbooking. Girls should be near completion of their pre-requisites (within three months) to attend and ready to submit their proposal within the program year (Oct. 1, 2015–Sept. 30, 2016). Leaders, advisors, and parents are encouraged to attend. **It is highly recommended to retake this workshop if you have not yet submitted your proposal and took your workshop before Aug. 1, 2015.**

SILVER AWARD WORKSHOPS

June 7, 4–6 p.m. Palmdale Service Center

June 16, 6–8 p.m. Arcadia Service Center

Grades 6–8 (\$10 registered girl, \$5 registered adults, \$20 non-registered girl/adult)

All new for the 2015–16 program year! Join us for a fun and interactive workshop where you will discover what is necessary to create an amazing Silver Award Take Action project. Learn how to identify a community need and how to address that need by sharing your skills and passions to help make the world a better place! This workshop is not required to achieve your Silver Award; however, it is very useful in learning the steps, how to submit your final report, and addressing any questions. This workshop is for Cadette Girl Scouts and their leaders. (The Silver Award is a troop leader-approved award program.)

GOLD AWARD WORKSHOP

July 14, 4–6 p.m. Woodland Hills Service Center

July 19, 6:30–8:30 p.m. Arcadia Service Center

July 21, 4–6 p.m. Santa Clarita Service Center

July 23, 9:30–11:30 a.m. Johnstone Program Center

Grades 9–12 (\$12 registered girl, \$7 registered adult, \$25 non-registered girl/adult)

Prerequisite for the Gold Award. All new for the 2015–16 program year! Trainers will guide you through a new interactive workshop to discover the requirements for a Gold-worthy project, how to choose a project, and how to design that project to be measurable and sustainable. The workshop covers the new online Go Gold proposal process, booking your interview, executing the project, and pre- and post-paperwork and scrapbooking. Girls should be near completion of their pre-requisites (within three months) to attend and ready to submit their proposal within the program year (Oct. 1, 2015–Sept. 30, 2016). Leaders, advisors, and parents are encouraged to attend. **It is highly recommended to retake this workshop if you have not yet submitted your proposal and took your workshop before Aug. 1, 2015.**

SILVER AWARD WORKSHOPS

July 5, 6–8 p.m. Montclair Service Center

July 19, 4–6 p.m. Santa Clarita Service Center

Grades 6–8 (\$10 registered girl, \$5 registered adult, \$20 non-registered girl/adult)

All new for the 2015–16 program year! Join us for a fun and interactive workshop where you will discover what is necessary to create an amazing Silver Award Take Action project. Learn how to identify a community need and how to address that need by sharing your skills and passions to help make the world a better place! This workshop is not required to achieve your Silver Award; however, it is very useful in learning the steps, how to submit your final report, and addressing any questions. This workshop is for Cadette Girl Scouts and their leaders. (The Silver Award is a troop leader-approved award program.)



I can't wait for

August & September!

GOLD AWARD WORKSHOP (S)(A)

Aug. 16, 6–8 p.m. Long Beach Service Center
Grades 9–12, (\$12 registered girl, \$7 registered adult, \$25 non-registered girl/adult)

Prerequisite for the Gold Award. All new for the 2015–16 program year! Trainers will guide you through a new interactive workshop to discover the requirements for a Gold-worthy project, how to choose a project, and how to design that project to be measurable and sustainable. The workshop covers the new online Go Gold proposal process, booking your interview, executing the project, and pre- and post-paperwork and scrapbooking. Girls should be near completion of their pre-requisites (within three months) to attend and ready to submit their proposal within the program year (Oct. 1, 2015–Sept. 30, 2016). Leaders, advisors, and parents are encouraged to attend. **It is highly recommended to retake this workshop if you have not yet submitted your proposal and took your workshop before Aug. 1, 2015.**

SILVER AWARD WORKSHOPS (C)

Aug. 16, 4–6 p.m. Woodland Hills Service Center
Grades 6–8 (\$10 registered girl, \$5 registered adult, \$20 non-registered girl/adult)

All new for the 2015–16 program year! Join us for a fun and interactive workshop where you will discover what is necessary to create an amazing Silver Award Take Action project. Learn how to identify a community need and how to address that need by sharing your skills and passions to help make the world a better place! This workshop is not required to achieve your Silver Award; however, it is very useful in learning the steps, how to submit your final report, and addressing any questions. This workshop is for Cadette Girl Scouts and their leaders. (The Silver Award is a troop leader-approved award program.)

ADVENTURE INTO THE GREAT OUTDOORS: SESSION II (B)(J)(C)(S)(A)

Sept. 16–18 (Overnight)
Grades 2–12 (\$110 registered girl, \$120 non-registered girl, \$110 adult)
Camp Osito Rancho, Big Bear

Escape the city life and enjoy a weekend full of adventures, exploring the great outdoors. Your adventure may include conquering the rock wall, or canoeing around the pond. Enjoy all camp has to offer as you take on this adventure and build memories to last a lifetime.

BADGE WORKSHOPS (B)(J)(C)(S)(A) **AT THE LONG BEACH COMIC CON**

Sept. 17, 10 a.m.–6 p.m.
Grades 2–12 (\$20 registered girl, \$30 non-registered girl, \$25 adult)
Long Beach Convention Center, Long Beach

GSGLA and the Long Beach Comic Con are teaming up so Cadettes can earn the Comic Artist badge, and Seniors can earn the Novelist badge during the convention! Girls will experience an entire day of activities while learning about the comic book industry. There will be a specific room where the novelists and comic book professionals will meet Cadettes and Seniors to fulfill their requirements for earning their badges. Girls of all levels will also be allowed a specified amount of time for a Laser Tag session! Plus, girls can wear their best super hero costumes for a costume contest. Price includes the supplies and badges, and admission to the Comic Con for both Saturday and Sunday—a \$50 value! (GSGLA program is on Saturday only). Ambassadors may attend the convention for the discounted price, but will not be allowed to attend the badge workshops. Junior and Brownie Girl Scouts 10 years and under will receive a map of activities and can enter for free with the purchase of a regular full price adult ticket (\$30).

GOLD AWARD WORKSHOP

Sept. 29, 4–6 p.m. Santa Clarita Service Center

Grades 9–12 (\$12 registered girl, \$7 registered adult, \$25 non-registered girl/adult)

Prerequisite for the Gold Award. All new for the 2015–16 program year! Trainers will guide you through a new interactive workshop to discover the requirements for a Gold-worthy project, how to choose a project, and how to design that project to be measurable and sustainable. The workshop covers the new online Go Gold proposal process, booking your interview, executing the project, and pre- and post-paperwork and scrapbooking. Girls should be near completion of their pre-requisites (within three months) to attend and ready to submit their proposal within the program year (Oct. 1, 2015–Sept. 30, 2016). Leaders, advisors, and parents are encouraged to attend. **It is highly recommended to retake this workshop if you have not yet submitted your proposal and took your workshop before Aug. 1, 2015.**

SILVER AWARD WORKSHOPS

Sept. 13, 4–6 p.m. Palmdale Service Center

Sept. 27, 6–8 p.m. Arcadia Service Center

Grades 6–8 (\$10 registered girl, \$5 registered adult, \$20 non-registered girl/adult)

All new for the 2015–16 program year! Join us for a fun and interactive workshop where you will discover what is necessary to create an amazing Silver Award Take Action project. Learn how to identify a community need and how to address that need by sharing your skills and passions to help make the world a better place! This workshop is not required to achieve your Silver Award; however, it is very useful in learning the steps, how to submit your final report, and addressing any questions. This workshop is for Cadette Girl Scouts and their leaders. (The Silver Award is a troop leader-approved award program.)

SHE & ME FUN

FAMILIES OR TROOPS

Sept. 23–25 (Overnight)

Grades K–12 (\$110 registered girl, \$120 non-registered girl, \$110 adult)

Camp Osito Rancho, Big Bear

Bring your daughter, niece, or troop for a weekend together to explore the adventure-filled program activities Camp Osito Rancho has to offer. Activities include beginning canoeing, arts and crafts, nature hikes, team-building games, archery, singing songs around a campfire, and more.

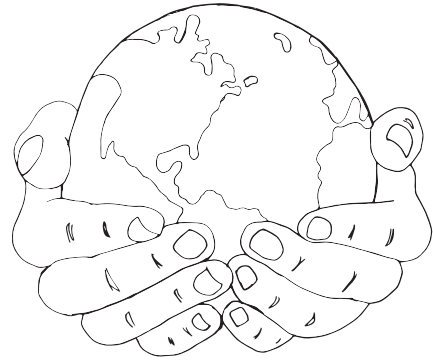
FUTURE FUN:

Check the online program calendar at girlscoutsla.org for these events coming soon:

- Girl Scout Family Day at Dodgers Stadium
- Girl Scout Family Day with LA Galaxy
- Special Girl Scout Movie Screenings (Tentative: *Finding Dory*, *Secret Lives of Pets*)
- Girl Scout Family Day at Angels Stadium
- GRAMMY Museum Day



GSGLA NEWS



GSGLA GIRL SCOUT GOLDEN EAGLET TURNS 100!



Marilee (far right) with Gold Award Girl Scouts at the 2014 ceremony.

As we celebrate in the 100th anniversary of Girl Scouting's highest award (now called the Girl Scout Gold Award), we also celebrate the 100th birthday of one of GSGLA's Golden Eaglets: Dr. Marilee Kone Scaff!

In November 2015, Girl Scouts around the world joined GSGLA in wishing Marilee, who resides in Claremont, a happy birthday. Local Girl Scouts and founder, Juliette Gordon Low, hand-delivered nine

postal services boxes filled with cards and more than 20 posters, and an additional basket with more than 300 cards. Several volunteer committees sorted the huge amount of mail, which came from 46 states (including Alaska) and six other countries (Australia, Canada, England, Germany, Ireland, the Netherlands), as well as the White House!

Marilee has lived an amazing life. She earned the Golden Eaglet in 1932, in

addition to 35 badges. She credits her Girl Scout skills in helping her and her family survive WWII as refugees for two years, and later living in an internment camp.

Before the war, Marilee and her husband started a school in a rural area of the Southern Philippines. She also earned a Ph.D. in educational psychology, and mentored the first African-American woman to complete a Ph.D. at the University of North Carolina. On top of all that, she

(cont'd →)



survived cancer three times!
Thank you to everyone who sent birthday greetings to Dr. Scaff!
We're so proud and humbled to call this remarkable woman one of our own.

Marilee has a special message for Girl Scouts of every age:

"First, learn to appreciate the beautiful world you live in. Treasure it. Protect it. Wherever you go, your Girl Scout training will be useful to you in ways you never expect, for you are building your own future. You are becoming the person you will be. Girl Scouts teaches you how to be your own best selves. Help others. Be a friend to all. Keep your promises. Enjoy life, and sing through the days!"



100 Years of the Highest Award

Girl Scouts' highest honor has had many names.

Girl Scout Gold Award
(1980–Present)

First Class
(1963–1980)

Curved Bar Award
(1940–1963)

Golden Eaglet
(1919–1939)

Golden Eagle of Merit
(1916–1919)

VOICES TO VISION

GSGLA PROPERTIES NEWS

After GSGLA voting members (ages 14 and up) ratified the board-approved properties recommendations at our annual meeting in April 2015, GSGLA got to work on those plans—and we have a lot to report!

The recommendations were developed based on a three-year process involving lots of analysis, data collection, and member feedback regarding the future of our four camps and ten program centers.

Here's the progress we've made:

- On Sept. 30, 2015, El Potrero was purchased by a horse rancher who will raise and ranch horses on the property.
- On Nov. 10, 2015, Skyland Ranch in the San Jacinto Mountains was purchased by our sister council, Girl Scouts of San Gorgonio, and therefore will continue to be available for Girl Scouts in Greater Los Angeles and throughout the Movement.

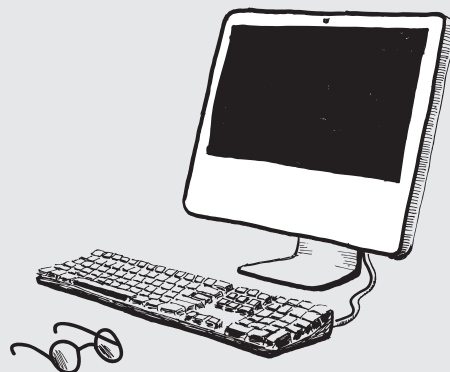
Plus, we have made major strides:

- constructing new fire-retardant bathrooms at Camp Osito Rancho;
- refurbishing the kitchen at Camp Lakota's ranch house;
- completing major fire prevention and drought-tolerance excavation at Osito and Skyland; and
- establishing a Lakota Task Force to develop a property vision for Camp Lakota.

This progress means greater opportunities to empower and encourage more girls in a myriad of ways. Thank you to everyone who has participated in this process! For more information, visit girlscoutsla.org or email propertyplanning@girlscoutsla.org.

NEW GSGLA WEBSITE DESIGN

Have you seen our website redesign? Head to girlscoutsla.org to take a peek—the clean and consistent design and clear navigation is a move Girl Scouts across the nation are making together. Look for easy how-tos to help you local your favorite information on the new site.



Have a timely troop triumph or "wow" moment in Girl Scouting you want to share? Send your story (and photos) to pr@girlscoutsla.org, and it might be featured in an upcoming issue of the Greater Program Guide.



FEBRUARY IS COOKIE TIME!



National Girl Scout Cookie Weekend | Feb. 27–28
Earn a Chance to Become a #GoldenTrefoil Booth!

Need a sales booster? On Feb. 27, tell customers that if they buy one more box of Trefoils, they might win a month's worth or even a year's worth of cookies!

In celebration of National Girl Scout Cookie Weekend, “golden tickets” AKA Golden Trefoils will be randomly placed on boxes of Trefoil Girl Scout Cookies. If a customer gets one, they will win a month's worth of cookies. One lucky winner will get the grand prize: an entire year of cookies. Schedule to booth on Saturday, Feb. 27—your troop might be selected from the drawing and be a #GoldenTrefoil booth. #GoldenTrefoil clues will be posted on our Twitter page @GirlScoutsLA to drive customers to you. Check our newsletters, website, and social media for more details!



Cookie Cupboard Volunteers Needed

Here's a way to get some exercise and make new friends: Help at a cookie cupboard at your local service center! Cupboards are where troop leaders and volunteers pick up cookies for girls to sell. This involves counting/loading cookies into cars and processing computer orders. Adults as well as Seniors and Ambassadors can volunteer. Consider having your older girl troop or service unit team “adopt a day” at the cupboards. Visit girlscoutsla.org for more information, or call 213-213-0123.



2015 EMERGING LEADER EXPERIENCE

By Maya E.,
Ambassador

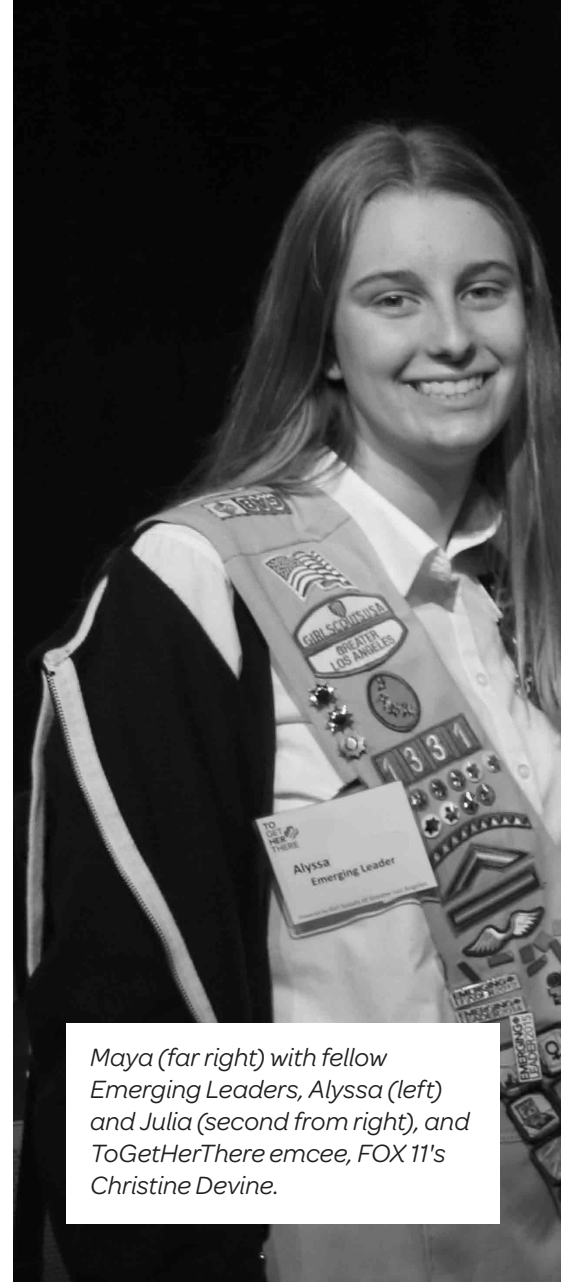
In November, I joined nearly 70 other Girl Scout Emerging Leaders in meeting with some of the top women executives and leaders in Los Angeles at GSGLA's 2015 ToGetHerThere Luncheon. It was an unforgettable experience!

The ToGetHerThere Luncheon is an annual event that builds the bridge between current women leaders and the leaders of tomorrow (us!). Being my third Emerging Leader experience, I can confidently say the third time was the charm! It was a truly inspiring day.

We started off with a mentoring session where we got to ask mentors from a plethora of fields questions about their journey to success. I met with five successful women from all kinds of backgrounds and professions from Los Angeles and beyond—including Julie Schoenfeld, the founder and CEO of Strobe, a pioneering tech company.

During our discussion, I shared with her my ambitions for a future in computer science, and she gave me advice on how to navigate a successful career in a currently male-dominated field.

After the mentoring session, we moved into the ballroom for the luncheon, which is my favorite part of the day because we are able to hear from various speakers, as well as eat a fantastic lunch!



Maya (far right) with fellow Emerging Leaders, Alyssa (left) and Julia (second from right), and ToGetHerThere emcee, FOX 11's Christine Devine.

gabbing with ***girl scouts***

**GSGLA's Girl Advisory Bureau (GAB) brings you
the girl perspective on council happenings.**



Reflecting back on the event, I couldn't imagine a better experience. As a high school senior, I know the connections I've made and advice I have been given have truly affected me. I highly encourage every older Girl Scout to apply to be an Emerging Leader. I look forward to the day when I can come back as an adult mentor.

Seniors and Ambassadors will be able to apply for the Emerging Leader experience again in late spring—stay tuned for details.

Maya (left) is congratulated by Sylvia Acevedo, Girl Scouts of the USA National Board Member.



GAM-TASTIC!

By Annie B.,
Ambassador

GAM, or Gathering of All Mariners, is an exciting marine-based competition that takes place in the spring every year. Throughout the three-day camping event, high school Girl Scouts showcase their mariner skills—everything from Morse code, swimming, and boating to compass, knots, and first aid—and work together and individually to compete for their

troop. My troop, nicknamed “Shark Bait,” has participated for many years, and I’m so glad I’ve been able to take part in this fun event!

While competitiveness is definitely in the air, Girl Scouting gives the competition an uplifting touch. I love the sense of camaraderie between girls of all troops, as we cheer each

other along during events and exchange stories and songs at campsites. I know I’ve made unforgettable friendships and memories at GAM. If you love the ocean and want to learn new skills, I really do recommend giving it a shot!

Find out more about 2016 GAM on p. 33.



Camping Rocks!



CAMP FIRST TIMER

by
Callie R.

Last summer was my first time going to Girl Scout Camp. I went to camp at El Ranchito in Long Beach, California. Everyday we did something new or different. Some of the things we did were make a bath bomb and lipgloss. The camp was fun, I may go again.

During my experience at the camp at El Ranchito, I overcame the fear of climbing rock walls. I used to feel like I was going to fall down. When I was at camp, I put that fear behind me and climbed a rock wall. I felt proud of myself for climbing the wall. I hope you get to experience El Ranchito too.

FIVE STEPS FOR GOING GOLD

By Frankie A.,
Ambassador



The road to earning your Girl Scout Gold Award may seem long, but don't fret, these six steps will help you! I earned my Gold Award in 2015 and learned so much from the experience that I want to share some tips with other Girl Scouts:

STEP 1: Brainstorm different issues that you are passionate about, like assisting the elderly, renovating a communal area, or helping the homeless. Also, think about your awesome skills—are you really good at graphic design, leading a team, or throwing a party? Maybe you could use those skills for your project.



STEP 2: Make a project proposal and start making calls or personally visiting the individuals who manage your possible location. During this time, you should begin to keep a list of the total amount of hours you used for each activity that pertains to your project. This will be used for your final project binder.

STEP 3: Devise a list of all the deadlines, materials, and people you will need to help complete your project. Some examples of deadlines may be when to have your donation letters and event invitations mailed (or your Facebook event page made), if your project is an event. Your materials can be any art supplies, food, or items that you will need to produce your successful project.

STEP 4: Get excited! Your project is almost complete! Make sure you have your materials, possible RSVPs for your event or project, and the instructions for those

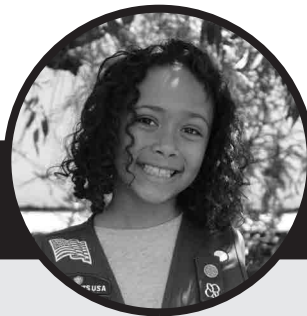
participants. It's important to be very clear with instructions while leading a group.

STEP 5: Make sure you have checked off every item on your deadline and material list. You should contact your participants to ensure that they are all informed and prepared for your project. On your actual project day, remember to have a big smile on your face and have fun!

STEP 6: Success! Remember to finish all of the paperwork that you are required to complete. I am positive that your project will go smoothly. Have fun, Girl Scouts!



Iman S.



Resident Camper

Which camps have you gone to?

Camp Osito Rancho, twice!

What are your top three favorite things about camp?

It's fun! You get to meet new friends, do exciting activities, and sleep in the wilderness.

What was your proudest moment at camp?

Learning to do the high rope climbing and overcoming my fear of falling. It made me feel really good to conquer that fear.

Why should girls go to Girl Scout camp?

Because they have amazing opportunities to try new things and overcome challenges.

What's your favorite Girl Scout song you sang at camp?

"Boom Chicka Boom"! I like to sing it loudly!

What advice do you have for girls going to camp for the first time?

Try not to be shy. Be open to new experiences!

Volunteer Voices

Sara Volanos



Summer Camp Volunteer

Camp Name:

Mickey (since I was 11 years old!)

Camp volunteer experience:

For at least 10 years, I have helped with program, planning, and even in the kitchen at day camps, neighborhood events, on Catalina Island, at Camp Osito Rancho, and more. My daughter and I participate together and have fun giving back to the girls by teaching and giving them new experiences.

What do you see as the biggest benefits of camp for girls?

All the new experiences that a non-Girl Scout might never get! Girl Scouts are exposed to the wonderful world of the outdoors, and even if they just go to a day camp, their eyes are opened to possibilities for the future, knowing that anything is possible.

Favorite camp tradition:

Introducing the new staff to the rollercoaster skit.

Favorite camp volunteer memory:

As I was leading a group of young girls to the tide pools on Catalina, they were saying "Touching creepy crawlies and slimy stuff—yuck!" But after we got there, I saw them engage and reach into the tide pools to hold and look at hermit crabs—the strange world was fun and full of adventure. The look on their faces was priceless. They could do what they thought they would never be able to do.

Top reasons why someone should volunteer at camp?

As a volunteer, you are able to go on new and exciting adventures; pass on knowledge to girls; witness their faces as they see something for the first time; and offer opportunities to girls who might not have these experiences otherwise.

ADULT TRAINING WEBINARS SCHEDULE

Visit the adult education calendar at www.girlscoutsla.org for details and to register for the following webinars:

FEBRUARY

- 2/1** Monday | *International Troop Travel*
- 2/9** Tuesday | *Special Events & Money Earning*
- 2/23** Tuesday | *Indoor Overnight*

MARCH

- 3/3** Thursday | *Senior/Amassador Level*
- 3/9** Wednesday | *Cadette Level*
- 3/22** Tuesday | *Junior Level*
- 3/24** Thursday | *Indoor/Overnight*

APRIL

- 4/4** Monday | *Domestic Troop Travel*
- 4/14** Thursday | *Basic Leader*
- 4/19** Tuesday | *Daisy Level*
- 4/26** Tuesday | *Indoor Overnight*
- 4/28** Thursday | *Brownie Level*

MAY

- 5/4** Wednesday | *Special Events & Money Earning*
- 5/11** Wednesday | *Basic Leader*
- 5/16** Monday | *Daisy Level*
- 5/18** Wednesday | *Junior Level*
- 5/19** Thursday | *Indoor Overnight*
- 5/24** Tuesday | *International Troop Travel*
- 5/26** Thursday | *Cadette Level*

JUNE

- 6/2** Thursday | *Senior/Amassador Level*
- 6/7** Tuesday | *Basic Leader*
- 6/9** Thursday | *Brownie Level*
- 6/14** Thursday | *Indoor Overnight*

SAVE THE DATE

GSGLA Volunteer Conference
August 6, 2016
Double Tree Hilton, Culver City
Open to all adult volunteers

Workshops & details up soon on girlscoutsla.org

CAMPING SKILLS TRAININGS

Visit the adult education calendar at www.girlscoutsla.org for details and to register for the following in-person camping skills trainings:

FEBRUARY

- 2/13** Saturday | *Camping Skills (El Ranchito, Long Beach)*
- 2/20-2/21** Saturday-Sunday | *Indoor Overnight*

MARCH

- 3/5** Sunday | *Indoor Overnight & Camping Skills (La Casita, Claremont)*
- 3/19** Saturday | *Camping Skills (Camp Mariposa)*

APRIL

- 4/16** Saturday | *Camping Skills (Camp Lakota, Frazier Park)*
- 4/30** Saturday | *Camping Skills (El Ranchito, Long Beach)*

MAY

- 5/7** Saturday | *Camping Skills (El Ranchito, Long Beach)*
- 5/14-5/15** Saturday-Sunday | *First Time Out (Camp Lakota, Frazier Park)*

GSGLA Training Website—do it yourself online

In addition to live webinars or face-to-face trainings, volunteers have the option to take part in new online trainings via our new training website at www.GSGLAOnlineTraining.org. On the site, online training is available based on your role. Select from the training categories that fit your needs—e.g., Daisy troop leader, troop treasurer, service unit manager, etc.—to find links to online learning, resources, recorded webinars, and more. You are also able to track the trainings you have completed and earn virtual badges. It's a one-stop shop for just-in-time trainings 24/7. Learn about Girl Scouting at every level, in your home or on the go!



SAVE THE DATE

**2016 ANNUAL MEETING AND
VOLUNTEER RECOGNITION
CEREMONY**

APRIL 16, 2016

PACIFIC PALMS HOTEL & CONFERENCE CENTER

*Hear the latest
council news!*

*Vote on important
council issues!*

*Honor outstanding
GSLA volunteers!*

*Save her spot for
another year of fun!*

**Early Bird
Renewal Period
4/1-6/30/16**



Help more girls have the Girl Scout experience!

Support the Family Partnership Campaign

Details at www.girlscoutsla.org

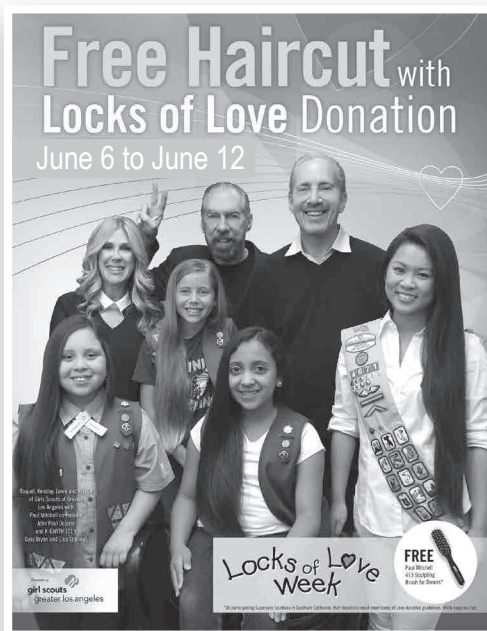




April 30, 2016

Feed Your Neighbor Food Drive & Service Day

Discover, connect, and take action to fight hunger in your community through this council-wide event!



Locks of Love
Week

June 6 to June 12

Get a new 'do and
donate to a great cause!

**Check our website for details on how
you can participate with GSGLA!**

It's Cookie Season!

Cookie-themed merchandise available in GSGLA stores near you.



girl scouts
greater los angeles

"IT'S ALL ABOUT CAMP!" KIT

Every camper needs one!

\$20

New!



Kit includes:

- **Backpack**
- **ID lunch bag**
- **Disposable camera**
- **Head-wrap**
- **Other camp goodies**

Kit details will be available in eBiz during open registration which begins on 2/12/16. After purchase, kits will be available for pickup at the GSGLA store of your choice before camp starts. Visit girlscoutsla.org for store hours.

EMERGING LEADER 2016

SENIORS AND AMBASSADORS: APPLY TO BE AN EMERGING LEADER!

Earn a unique opportunity to meet some of LA's most influential female leaders through an inspiring mentoring session and luncheon in November.

Emerging Leaders are high school-aged Girl Scouts who exemplify leadership and the characteristics of courage, confidence, and character.

Check out girlscoutsla.org in late spring for more details.

Want to advertise in
this program guide?



Contact
ads@girlscoutsla.org
to learn how.

#connect



facebook.com/GSGLA



[facebook.com/
GSGLACookieNutFriend](https://facebook.com/GSGLACookieNutFriend)



[@GirlScoutsLA](https://twitter.com/GirlScoutsLA)



[@GirlScoutsLA](https://instagram.com/GirlScoutsLA)



pinterest.com/GirlScoutsLA

Service Centers

Arcadia

101 East Wheeler Avenue
Arcadia, CA 91006

Long Beach

4040 North Bellflower Boulevard
Long Beach, CA 90808

Marina del Rey

4551 Glencoe Avenue, Suite 140
Marina del Rey, CA 90292

Montclair

9525 Monte Vista Avenue
Montclair, CA 91763

Palmdale

41307 12th Street West, Suite 105
Palmdale, CA 93551

Santa Clarita

21515 Soledad Canyon Road, Suite 118
Santa Clarita, CA 91350

Woodland Hills

20931 Burbank Boulevard, Suite A
Woodland Hills, CA 91367



801 South Grand Avenue, Suite 300
Los Angeles, CA 90017

213-213-0123

girlscoutsla.org

Let's Start Samoa Troops!

Recruit new troop leaders during
cookie season and earn prizes!



Here's how:

1. Starting Feb. 1, talk to people (at your cookie booth or anywhere!) about how they can become a troop leader
2. Gather their contact information and report it at www.girlscoutsla.org/samoatroops by March 11
3. If your recruit is confirmed as a new troop leader by April 22, your troop will start earning prizes!

Prizes:



A patch for every troop member and 2 leaders
Any troop that recruits a leader to start a new troop



A troop ice cream party at your local service center
Top recruiting troop in your service unit's region



A party at Girl Scout headquarters with GSGLA CEO Lise L. Luttgens
Top recruiting troop in the council

Prizes are
cumulative!

Full details & rules: www.girlscoutsla.org/samoatroops
Questions? Please contact Customer Care at 213-213-0123.

GREATER adventures



JUNE

- JUNE 6-12 • Mon-Sun**
Throughout Southern California
Locks of Love Week
- JUNE 13-17 • Mon-Fri**
El Ranchito, Long Beach
Super Girls
- JUNE 27-JULY 1 • Mon-Fri**
William S. Hart Park, Newhall
Peace, Love, and Mother Nature Rocks

JULY

- JULY 11-15 • Mon-Fri**
El Ranchito, Long Beach
Little Camp on the Prairie
- JULY 18-23 • Mon-Sat**
Camp Osito Rancho, Big Bear
Follow the Trails
- JULY 25-29 • Mon-Fri**
Marine Landing, Long Beach
It's My Party!

AUGUST

- AUGUST 1-5 • Mon-Fri**
Camp Mariposa, Altadena
Super Scouts!
- AUGUST 1-6 • Mon-Sat**
Camp Osito Rancho, Big Bear
Nature's Clues
- AUGUST 19-21 • Fri-Sun**
AUGUST 26-28 • Fri-Sun
Camp Osito Rancho, Big Bear
Family Camp at Osito Rancho

SEPTEMBER

- SEPTEMBER 9-11 • Fri-Sun**
Catalina Island
Ocean Fun on Catalina Island
- SEPTEMBER 17 • Sat**
Long Beach Convention Center, Long Beach
Badge Workshops at Long Beach Comic Con
- SEPTEMBER 23-25 • Fri-Sun**
Camp Osito Rancho, Big Bear
She & Me Fun - Families or Troops

FOLLOW US:



MY NOTES

Find out more details about these events and register for them at

www.girlscoutsla.org



801 S. Grand Ave., Suite 300
Los Angeles, CA 90017

NON-PROFIT ORG
U.S. POSTAGE
PAID
CLAREMONT, CA
PERMIT #77

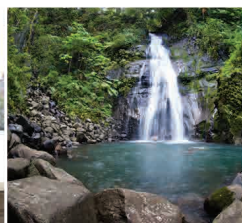


Tours for Girl Scouts®

SHOW YOUR GIRLS THE WORLD

Give your girls a global perspective and take them on an all-inclusive international tour designed just for Girl Scouts. From pinning ceremonies at a WAGGGS World Centre to fashion tours in Paris to meaningful service projects in Peru, girls return home more confident, with a wealth of new skills and a new perspective on the world.

Download a free ebrochure at
eftours.com/gsdiscovers or call 800-457-9023.



eftours.com/girlscouts

EVERY ALL-INCLUSIVE TOUR COVERS:



Full-time Tour Director



Entrances



Experiential learning



Round-trip flights on major carriers



Comfortable motorcoach



Overnight stays in hotels



Regional-style meals



EF Travel Patch