

The
Camp
Issue | **Feb**
2015

GREATER

Girl Scouts of Greater Los Angeles Publication

pull-out
poster inside!

In This Issue

*Camps
& Programs,
May-Sept*

*GSGLA
Robotics Rocks!*

*Learn to Code and
Win a Trip to Google!*

I can't wait to

go to camp!

VOICES TO VISION

VIEW THE **PROPERTY
RECOMMENDATIONS** 

ATTEND THE **RATIFICATION VOTE**

After a 1.5-year-long property strategic planning process (Voices to Vision), recommendations have been made regarding GSGLA's program centers and camps.


girl scouts
greater los angeles

Join us for an important vote!

April 18, 2015

A ratification vote by the registered membership (ages 14+) will be held at the GSGLA Annual Meeting & Volunteer Recognition Ceremony.

GSGLA Annual Meeting &
Volunteer Recognition Ceremony
Saturday, April 18, 2015
Pacific Palms Hotel & Conference Center
City of Industry, CA

To view property recommendations and RSVP for the vote, visit www.girlscoutsla.org.

Headquarters

801 S. Grand Ave., #300
Los Angeles, CA 90017

Business hours:

Mon-Fri, 8:30 a.m.-5 p.m.

GSGLA offices are closed on the second and fourth Monday of each month.

TABLE OF CONTENTS

CAMP GUIDE

- 2 Welcome to Camp!
- 3 Girl Scout Property Highlights
- 4 Camp Registration
- 5 Financial Aid
- 6 Frequently Asked Questions
- 9 Camp Osito Rancho Resident Camp
- 12 Day Camps
 - 12 El Ranchito
 - 14 Marine Landing
 - 17 Mariposa
 - 19 Covina Program Center
- 19 Specialty Camps
 - 19 Specialty Day Camps
 - 21 Specialty Overnight Camps (Girls or Troops)
 - 23 Specialty Overnight Camps (Families or Troops)
- 24 Camp Forms

PROGRAM GUIDE

- 29 More Programs
 - 30 May
 - 32 June
 - 32 July
 - 33 August
 - 33 September

GSGLA NEWS

- 35 GSGLA News
- 35 Troop Triumphs
- 38 Gabbing with Girl Scouts
- 42 Five Minutes With...
- 42 Volunteer Voices
- 43 Adult Training Webinars Schedule

GSGLA is committed to the extraordinary legacy of Girl Scouts and its mission to build girls of courage, confidence, and character, who make the world a better place.

For more information on how to join, volunteer, reconnect, or donate, call 213-213-0123 or visit girlscoutsla.org.

GSGLA is an Equal Opportunity Employer.

Información disponible en Español o llamando al 213-213-0123.

We can't wait to

see you!



Dear GSGLA Girl Scouts and Girl Scout Families:

Summer: what better time to unplug and recharge? For girls as young as in kindergarten or as old as in 12th grade, Girl Scout summer camp is the place to have fun and try new experiences. We call it getting “down to earth”—stepping outside, meeting new friends, and seeking out exciting challenges.

At Girl Scouts of Greater Los Angeles, our goal is to instill confidence, leadership skills, and a collaborative spirit in girls, and the key to teaching them those life lessons is infusing fun and imagination in everything we do. Through unique Girl Scout camp activities—such as archery, zip-lining, hiking, outdoor sports, paddle-boarding, crafts, and more—girls develop passions, gain a sense of pride, and become independent.

Every summer, we receive countless emails and calls from girls and parents talking about that one relay race, surfing lesson, or art project that made an impact. At camp, girls discover something new each day—something beyond the screen of a cell phone, laptop, or tablet. They discover themselves and the world around them.

We can't wait to see you there!

Yours in Girl Scouting,

Lise L. Luttgens
Chief Executive Officer

PROMOTING YOUTH DEVELOPMENT

Girl Scouts is the premier leadership organization for girls! Girl Scouts of Greater Los Angeles supports the mission of the organization by providing engaging and empowering opportunities, such as camp experiences, to more than 40,000 girls and young women.

According to an American Camp Association (ACA) study, camp engages youth to learn about themselves while gaining skills in:

leadership

friendship skills

peer relationships

independence

adventure & exploration

spirituality

social comfort

environmental awareness

self-esteem

values & decisions



GSGLA PROPERTIES

CAMP OSITO RANCHO

This premier Girl Scout outdoor leadership camp is a spectacular 160-acre high-adventure mountain camp located in the San Bernardino Mountains above Big Bear Lake at 7,500 feet. Activities include swimming, archery, team-building games, nature, and environmental activities. We also offer a challenge/ropes course, zip line, hiking, outdoor cooking, canoeing, horseback riding, as well as arts and crafts.

EL RANCHITO

El Ranchito is an outdoor, park-like property located at the Long Beach Service Center that includes outdoor and indoor sleeping accommodations. El Ranchito will host weeklong themed day camps.

MARINE LANDING

Located on Alamitos Bay in Long Beach, Marine Landing is a one-of-a-kind waterfront facility offering a private boating beach, charming boathouse, and beautiful sea views. Camp sessions will include boating and marine activities plus swimming and plenty of play time at the beach. The camp will host weeklong themed day camps.

MARIPOSA

Mariposa is a cozy camp in the foothills of Altadena in the San Gabriel Valley. It includes a wooded area with a small pond and a campfire ring with an adjacent amphitheater. This camp will host weeklong themed day camps.

COVINA PROGRAM CENTER

Located in Covina, this program center offers a backdrop for wonderful outdoor activities and adventures. This is a great environment for girls to get a taste of camp.

SKYLAND RANCH

Located in a pine and oak tree forest near Idyllwild, Skyland Ranch offers girls a chance to explore the beautiful San Jacinto Mountains. The property encompasses 195 acres of pine and oak forests, chaparral, and apple orchards. This is a wonderful place to enjoy a session of camp.

For more information on renting GSGLA properties, please email propertyreservations@girlscoutsla.org.



**I can't wait to
register!**

WHEN TO REGISTER

Registration for all summer camps opens **Feb. 13, 2015**. Registrations are processed on a first-come, first-served basis. We encourage current Girl Scouts to register online to expedite the registration process before spots sell out!

HOW TO REGISTER

Register online at www.girlscoutsla.org—**registrants must already have an online eBiz account or be able to activate one.** (Please direct questions regarding eBiz account activation to helpdesk@girlscoutsla.org.) Our online eBiz system accepts all major credit cards. (Note: Email is the main form of camp communication, so please enter an email address that you actively use, and check your spam folder regularly.)

Families of non-Girl Scout members must purchase a Girl Scout membership and create an eBiz account in order to register for camp. To set up an eBiz account, please email the help desk at helpdesk@girlscoutsla.org for further assistance.

El Ranchito, Marine Landing, Mariposa, and Osito Rancho allow for deposits. All other camps found in the camp guide require full payment at the time of registration. Deposits are non-refundable and non-transferable between camps.

Girls who would like to request a “camp buddy” may do so online. Girls must register for the same camp session. While every attempt is made to place girls together, it is not guaranteed.

Camp fee balances are due four weeks prior to the start of every camp session. Late payments may result in a loss of placement in the camp and forfeit of the deposit. **If payment is not received, your camper will be dropped from the camp and the deposit will be forfeited. It is the responsibility of the camper's parent to pay camp fee balances by this deadline, regardless of whether an invoice is received.** Balances may be checked through your eBiz account. **If a registration is submitted after balances are due, payment in full is required.**

Confirmations will be sent by email and will include a link to Health History forms (also available at girlscoutsla.org).

REFUND POLICY

Registrations are processed on a first-come, first-served basis. If your camper's selected camp is full and no alternative is available, you will receive a full refund for any deposit or fees paid. All deposits for all camps are otherwise non-refundable and non-transferrable. The only exception to this policy is:

If a camper can no longer attend camp due to illness or injury—a physician's letter must accompany the refund request.

No pro-rated refunds will be made for campers who leave early, or choose not to attend the full camp session.

Refund requests must be submitted by email to Camp Registration at campregistration@girlscoutsla.org.



FINANCIAL AID | CAMPERSHIPS DEADLINE TO APPLY IS MAY 8, 2015

Financial aid "camperships" are awarded to campers on the basis of financial need only, and are available for all resident, day, and specialty camps. Each applicant will be considered for one resident/specialty camp or two-day camps. Families are asked to provide the maximum dollar amount they can contribute for camp. This amount is based on what a family can afford and must be provided with the campership application for consideration. Camperships vary in amount and may not cover the entire cost of a camp(s). **Parents interested in applying for a campership must submit all of the following documents together by May 8, 2015 for consideration:**

- Financial Aid Cover Sheet Checklist
- Completed Camp Registration Form
- Maximum dollar amount family is able to contribute at time of registration
- Completed Financial Aid Campership Application
- Copy of proof of income for all contributing members of the household (2014 tax return, recent pay stub, or letter from employer)

Incomplete applications will not be considered and will be returned to you. Please note: Only registered girl members of GSGLA can apply for financial aid.

The deadline to submit campership applications for all camps is May 8, 2015, regardless of when the selected camp(s) takes place. Registrations may be submitted at any of our seven service centers; faxed to 909-624-7928; or mailed to: GSGLA Montclair Service Center, 9525 Monte Vista Ave., Montclair, CA 91763 c/o Financial Aid-Camp. *All mailed applications must be postmarked on or before May 8, 2015, to be considered.* Please direct all financial aid questions to Daniel Martinez at dmartinez@girlscoutsla.org.

Please submit only one application per girl. Awarding rules are the same for every applicant, without regard to race, ethnicity, age, special needs, or socioeconomic status, provided all program requirements are met. **Campers who are selected to receive a campership will be informed of their award by mail or email. Please make sure to check your spam folder for communications.**

Please note: Any unpaid balances from the previous camp year must be paid before you may apply.

FREQUENTLY ASKED QUESTIONS

Who owns and operates the camps?

Girl Scouts of Greater Los Angeles (GSGLA) owns and operates three large resident camps in the greater Los Angeles area: Camp Osito Rancho in Big Bear, Camp Lakota in Frazier Park, and Skyland Ranch near Idyllwild. GSGLA also operates several unique program sites that host day and/or specialty camps listed on our property highlights page. While many camps are held at GSGLA-owned facilities, GSGLA has partnerships with non-Girl Scout facilities to host specialty camping opportunities created to best meet the varying interests of girls. GSGLA program staff members work directly with these partners when offering a camp experience through our organization.

Do I have to be a Girl Scout to attend camp?

If a camper is not currently a Girl Scout, a one-time \$15 annual membership fee will be applied in addition to your total camp fees. As a member, girls can participate in an array of council-sponsored programs located across the greater Los Angeles area.

Are there age limits for certain camps?

Yes, all of our camps are geared toward certain age groups. Please check camp descriptions for grade specifications. Listed grades refer to the upcoming school year which is the grade the camper will be attending in the fall.

Is financial aid available?

Yes, financial aid "camperships" are available for campers whose family financial circumstances might otherwise prevent them from attending camp. Interested applicants must submit the Financial Aid Campership Application with their camp registration form, family contribution, and proof of income by the May 8, 2015 deadline. For more details, please see the "Financial Aid" section on page 5.

Will my camper need a physical examination to attend camp?

For resident camp, yes. Each camper is required to have a physical examination within 12 months of the starting day of their scheduled camp session. A Health History Form is required for all campers and must be completed no more than two months prior to the camper's session. Please note that there are additional camps where a physical will be required. The form will be included in the camper confirmation packet and is available to download at girlscoutsla.org.

What if my child needs medical or special attention while at camp?

Resident camp has a qualified professional health supervisor on site, and all camps have first-aid-certified adults on site at all times who administer routine health care and any medications. An emergency contact plan is in place should any medical emergencies occur. Parents are notified as soon as possible in the event of any special medical or emergency situation. If your camper has any special needs (physical, behavioral, etc.), every effort will be made to accommodate her special needs. Please include any past or potential concerns on the Health History Form. The camp director will contact you prior to your daughter's session.

Can special foods be provided?

Most special dietary needs can be met if camp directors are notified in advance. At resident camp, meal options due to medical, religious, or other reasons are available. Please indicate these requirements on your camper's Health History Form. Vegetarian alternatives are offered at every meal.

Can my camper be in the same unit as her friend?

While every attempt is made to place girls together, it is not guaranteed. Girls must be the same program level and be registered for the same camp session. For more details please see the "How to Register" section on the "Registration" page (4).

What are camp staff like?

Camp staff (paid and volunteer) are enthusiastic, fun, caring, energetic, well-trained, and experienced individuals who are hired based on their ability to work with children in a learning and nurturing environment. All staff are required to complete between 10 and 40 hours of training, based on camp and position.

American Camp Association accreditation for resident camp requires training for all resident camp staff on topics including youth supervision, child development, program planning, conflict resolution, first aid, CPR, and additional certification for specialized program delivery. The resident camp ratio of staff to campers fourth grade and above is 1:8, for second and third grade is 1:6 with a ratio of 1:6 for high-adventure programs. The day camp ratio is 1:10 and for aquatic activities it is 1:8.

What camp health and safety standards are maintained?

All GSGLA camps meet the health and safety standards and guidelines established by Girl Scouts of the USA and the State of California. Copies of the California Health Department's inspections are kept on file at the council office.

What is a counselor-in-training (CIT)?

Girls in grades 9–12 who are interested in a future job as a camp counselor or who want to expand their leadership skills in other arenas are encouraged to participate in our CIT I or CIT II Summer Leadership Experience. Please refer to the Camp Osito Rancho section (page 9) for further details.

What is a program aide (PA)?

Program aides are Girl Scouts in grades 7–12, who are interested in working with younger girls, sharing their knowledge and talents with them while gaining valuable experience under adult supervision. These Girl Scouts have completed the required training hours and have registered for the camp PA programs. They earn community service and leadership hours while satisfying school volunteer and Girl Scout leadership requirements. Program aide training opportunities can be found at girlscoutsla.org.

Do adults attending overnight camps need to complete a background check?

All adults participating in overnight trips must first be registered and cleared as a GSGLA adult volunteer by following these steps:

1. **Become a member** with Girl Scouts of Greater Los Angeles by creating an account with and registering through eBiz. (Visit girlscoutsla.org and click on the eBiz tab in the top right corner).
2. **Complete a volunteer application** at gsglavolunteerapps.org.
3. Upon completion of the Volunteer Application, a unique link will automatically be emailed to you to **complete a background screening**.

For more information about background checks, please contact customer care, customercare@girlscoutsla.org.



HELP GIVE ANOTHER GIRL A SUMMER TO REMEMBER!

DID YOU KNOW?

Each year, hundreds of girls who attend GSGLA camps require financial assistance based on their family's need.

DONATE TODAY!

Adventure

Friendship

Independence

Leadership

Go to www.girlscoutsla.org and follow these steps:

1. Click the "Donate" button in the top right hand corner.
2. Fill out the form. Don't forget to select Campership in the Designation box before you click "Donate Now" at the bottom.

Give yourself a pat on the back. You just helped a girl in your area experience the friendship and adventure of summer camp!


girl scouts
greater los angeles





I can't wait to camp at

Osito Rancho!

Located in Big Bear, this beautiful resident camp offers girls the opportunity to experience all that the great outdoors and our camp property has to offer. Sample activities include swimming, archery, canoeing, a challenge course, zip-lining*, working with horses**, hiking, arts and crafts, and nature. Our days and nights are filled with adventures and new challenges.

Here, the Girl Scout Leadership Experience comes to life. Girl-led opportunities and decision-making is encouraged throughout the camp session. Our camp program focus will allow girls to discover themselves and connect with others as they explore all the adventures of camp. The Journey, It's Your Story—Tell It!, is woven into all the program areas of camp for our Brownies, Juniors, and Cadettes. We also offer the opportunity for the campers to complete many requirements for various age-appropriate badges.

Please note: Due to various factors, your camper may not be able to participate in all of the activities offered at Osito Rancho. Weather at camp can change rapidly, causing our activities to be canceled due to rain or lightning. We do our best to reschedule, but due to time constraints this is not always possible.

Bus transportation to and from resident camp from the Arcadia, Long Beach, and Woodland Hills service centers is included in the cost of each session. You may also choose to drive your child **to** and **from** camp. **We cannot accommodate interchanging the methods of transportation.** Transportation **to** and **from** camp must stay consistent in order to provide the best possible safety and service for the girls—**there are no exceptions.** In addition, each camper will receive an Osito Rancho commemorative souvenir with the camp logo, a camp patch, and any badges they may have earned.

For more information about any of the resident camp sessions or activities, please contact Carolyn Goss, cgoss@girlscoutsla.org.

*Our zip line has a height, weight, and age limitation. In order to provide the safest and best experience for the girls, participants must be entering eighth grade and above and be between the weight limits of 80-250 pounds.

**Girls who have registered for our horse camp sessions are guaranteed time with the horses daily. We will do our best to provide non-horse camp participants time with the horses. Again, this is based on time and weather.

HEALTH FORMS

The Camp Osito Rancho Health History Form must be signed by a physician. Please visit girlscoutsla.org to download the 2015 Camp Osito Rancho Health History Form, or follow the link provided in your email confirmation once you register for camp. **All correspondence will be by email, so please check your eBiz account to make sure your email is correct and up to date in order to receive vital information regarding camp.** ONLY Camp Osito Rancho Health History Forms will be accepted—no substitutions for school or other camps will be allowed. Signed and completed 2015 Camp Osito Rancho Health History Forms must be scanned and emailed to: ositoranchohealthforms@girlscoutsla.org, or faxed to 626-677-2456. **Forms must be received at least two weeks prior to your camper's session of camp.** We will not be accepting any forms in person on the first day of camp. If these deadlines are not met, your girl will not be able to attend that session of camp and you will need to contact the registration department regarding the balance of your account. If forms cannot be faxed or emailed, please contact the **Osito Rancho Health Forms Hotline for more information on how to submit: 626-677-2282 or ositoranchohealthforms@girlscoutsla.org.** (For general questions about programs or operations at Camp Osito Rancho, contact Camp Director Carolyn Goss at cgoss@girlscoutsla.org or 626-677-2302.)

CAMP ACCREDITATION

Camp Osito Rancho is accredited by the American Camp Association (ACA). Every three years, the camp goes through an accreditation process with on-site visits to evaluate and verify compliance with a set of national standards established by professionals in the camping industry. This is an action we take voluntarily. The standards establish guidelines for needed policies, procedures, and practices in the administration of key aspects of camp safety management.



COUNSELORS-IN-TRAINING (CIT) PROGRAM

The CIT Summer Leadership Experience is a great opportunity for girls in grades 9–12 who are interested in working as a camp counselor or want to expand their leadership skills. CITs will shadow counselors, be a mentor, and work with younger girls in the camp environment. CITs will also gain a better understanding of how resident camps are run while having lots of fun! While much of the time at camp will be focused on our CIT curriculum, girls will also have the opportunity to participate in some of the other camp activities including canoeing, archery, zip-lining, and swimming.

CIT 1 Pre-requisites: Must have completed one of the following:

- One year as a registered Girl Scout
OR
- Program Aide Training

CIT 2 Pre-requisite: Must have completed CIT 1

There is limited space for each CIT session. If interested, please contact Carolyn Goss at cgoss@girlscoutsla.org to start the application process.

THEMED WEEKS OF CAMP

Explore New Adventures

Session 1 | July 7–11 (4 nights)

New adventures await you as you experience the world of camp! Try your hand at archery, learn canoeing and other high-adventure activities, meet new friends, and enjoying the great outdoors. Tell your camp story through dramatic play and arts and crafts. As night falls, a new world opens up when you sleep under the stars, take a flashlight hike, watch the moon, and of course sing around the campfire. Make memories that will last a lifetime!

Let's Tell Nature's Story

Session 2 | July 13–18 (5 nights)

Discover what you love about camp, and then tell nature's story through journaling and dramatic play. Experience our many high-adventure activities while learning new outdoor camping skills. Camp does not stop when the sun goes

down; take a night hike, stargaze, and have a sparkle party. The magic of camp is waiting for you!

Girl Scouts 101

Session 3 | July 20–25 (5 nights)

It's time to get back to basics! Rule the forest while learning survival techniques and Girl Scout camp traditions. Hone your archery skills, enjoy teambuilding activities, and make fun camp crafts. Cook a meal over a fire and learn compass and orienteering before experiencing an overnight trip through the woods. Make new friends, sing around the campfire, and soak in nature's beauty. This is what camp and Girl Scouting is all about!

Nature's Clues

Session 4 | July 28–Aug. 1 (4 nights)

Every day is a new experience at camp! Create everlasting memories while climbing the rock wall, testing

your skills at archery, hiking, and making crafts. Share your stories with your new friends as you sleep under the stars and experience nightlife to find nature's clues in a camp-wide scavenger hunt. Camp adventures are at your fingertips!

Artistic Adventures

Session 5 | Aug. 4–8 (4 nights)

Use your imagination as you experience camp. Express yourself through the arts after hiking through the woods, canoeing, trying your hand at archery, and participating in other high-adventure activities. Enjoy themed meals, singing around the campfire, and discovering the mysteries of camp at night. Gain memories that will stay with you forever!

HORSE CAMP

The equestrian staff works with campers in group sessions, instructs in Western riding, and provides individual attention based on a camper's skill level as a rider. Beginner and intermediate riders are encouraged to attend. Our program offers very basic horsemanship skills and mountain terrain trail rides. All sessions include horse care, saddling, and riding instruction. While the majority of the time at camp will be focused on horse-related activities, girls will have the option of participating in some of the many other activities camp has to offer.

Saddle Up – Offered for both four- and five-night sessions.

Never walk when you can ride and discover nature on horseback! Spend part of your day grooming and feeding the horses. Learn to improve your saddling, bridling, cueing, and of course, your individual riding skills.

OSITO RANCHO CAMP DATES & COSTS

Session 1: July 7–11 (4 nights)

Explore New Adventures Grades 3–8, \$445

Saddle Up (horse program) Session I

Grades 4–8, \$565

CIT 1 Grades 9–12, \$315 **Session I**

CIT 2 Grades 10–12, \$315 **Session I**

Session 2: July 13–18 (5 nights)

Let's Tell Nature's Story Grades 3–8, \$545

Saddle Up (horse program) Session II

Grades 4–8, \$665

CIT 1 Grades 9–12, \$390 **Session II**

CIT 2 Grades 10–12, \$390 **Session II**

Session 3: July 20–25 (5 nights)

Girl Scouts 101 Grades 3–8, \$545

Saddle Up (horse program) Session III

Grades 4–8, \$665

CIT 1 Grades 9–12, \$390 **Session III**

CIT 2 Grades 10–12, \$390 **Session III**

Session 4: July 28–Aug 1 (4 nights)

Nature's Clues Grades 2–8, \$445

Saddle Up (horse program) Session IV

Grades 4–8, \$565

CIT 1 Grades 9–12, \$315 **Session IV**

CIT 2 Grades 10–12, \$315 **Session IV**

Session 5: Aug. 4–8 (4 nights)

Artistic Adventurers

Grades 2–8, \$445

Saddle Up (horse program)

Session V

Grades 4–8, \$565

CIT 1 Grades 9–12, \$315 **Session V**

CIT 2 Grades 10–12, \$315 **Session V**



I can't wait to go to

El Ranchito!

Located in Long Beach, El Ranchito offers an exciting adventure every week! At this beautiful tree-filled, park-like day camp, girls are grouped by grade level in shaded units. Girls explore traditional Girl Scout activities such as games, arts and crafts, songs, interacting with nature, and making new friends. They will also have the opportunity to earn badges. **This year, there are many exciting new elements at El Ranchito, including an archery range, gaga (a kinder and gentler version of dodge ball) court, low ropes course, and a 32-foot tall climbing wall.** All campers can enjoy the gaga court and low ropes course, and starting this year our campers entering **second through sixth grade** have the opportunity to participate in archery and the climbing wall. These activities are available every week of camp. **Our campers entering fourth through sixth grades will experience enhanced girl-led choices, including building their leadership skills, exploring what it means to be a program aide, more elaborate arts and craft projects, urban hiking through Heartwell Park, advanced team building, gaga competitions, and more. Special weeks will offer an evening program including dinner and a campfire program.** The themes for each week provide additional activities and enjoyment for the campers. Price includes: two daily snacks, an El Ranchito commemorative souvenir, a camp patch, any badges earned, and a group picture. For more information, please contact Kalie Brisbon, kbrisbon@girlscoutsla.org.

EXTENDED CARE

Camp hours are 9 a.m. to 4 p.m. Before and After Care is available from 7 to 9 a.m. and 4 to 6 p.m. for \$50 per week. If only a.m. or only p.m. care is needed, the cost is \$25 per week. There is no daily rate. **Note: A \$10 late fee will be charged every 15 minutes after 6 p.m.**

PROGRAM AIDE (PA) LEADERSHIP EXPERIENCE

Girls entering grades 7–12 must have completed Program Aide Training before applying. An El Ranchito PA orientation is mandatory for girls who will be PAs during the summer camp season. We will be offering two sessions: May 20 and May 28, 6–8 p.m. at the Long Beach Service Center. PAs are assigned to units and work closely with counselors and campers. For an application, please visit our camp page, girlscoutsla.org/pages/camp/camp.html. ***PAs will receive a shirt.**

Glamour Girls

June 15–19

Grades K–3, \$150

Grades 4–6, \$170

Explore the glamorous side of Girl Scout camp with this fabulously fashion-filled week. Add some

sparkle and shine to your week as you walk the runway in the El Ranchito fashion show wearing the jewelry, tutus, hairpieces, and other trendy items you've hand-crafted. Relax while learning yoga and enjoying a day at the spa

after creating your very own spa products and lip gloss. Daisies will earn the Vi petal, Brownies will earn the Making Friends badge, Juniors will earn the Jeweler badge, and Cadettes will earn the Entrepreneur badge.

Movin' and Groovin'**June 22–26****Grades K–3, \$150****Grades 4–6, \$170**

Song-and-dance camp is back by popular demand! Explore different styles of music, dance, and theater from classical to contemporary. Enjoy visits from special guest performing artists and create your own instrument. Each unit will learn two musical numbers (music, lyrics, and choreography) and create props and costume pieces for the final performance. Daisies will earn the Gerri petal, Brownies will earn the Dancer badge, Juniors will earn their Musician badge, and Cadettes will earn their Public Speaker badge. Sing and dance your way into the hearts of all who attend our grand finale performance on June 26 at 5 p.m.

Walk on the Wild Side**June 29–July 3****Grades K–3, \$150****Grades 4–6, \$170**

Are you all about animals? Take a Walk on the Wild Side as we play paw print Twister and learn about animals through art and play. Experience a Wildlife Ed-Venture with Animal Tracks Inc., where you may get a chance to help with their rescued friends. Long Beach K-9 Unit will join us for a special presentation on the role their furry friends play in keeping our community safe. Daisies will earn the Birdbath award, Brownies will explore the Pets badge, Juniors will explore the Animal Habitats badge, and Cadettes will earn the Animal Helpers badge.

Little Camp on the Prairie**July 6–10****Grades K–3, \$150****Grades 4–6, \$170 (Wednesday Evening Program)**

Travel back in time and experience life on the prairie. Make paper dolls, candles, and other time-period crafts. Work together to make butter

and fresh-squeezed lemonade for all to enjoy at our festive old time fair. Discover what it was like for the first Girl Scouts as you watch *The Golden Eaglet*, the story of a Girl Scout in the early 1900s. Daisies will earn the Sunny petal, Brownies will earn the Household Elf badge, Juniors will earn the Gardener badge, and Cadettes will earn the Woodworker badge. **Girls entering fourth grade and above are invited to join us for an extended day at camp that includes dinner and a campfire program.**

Tinker, Invent, Build!**July 13–17****Grades K–3, \$150****Grades 4–6, \$170**

Imagine you have the skills to create anything you can dream of. Explore an exciting Techbridge program and discover that through science and engineering, anything is possible! In Power it Up! (grades K–3) girls will tinker with snap circuits to create flows of energy to power their own projects. In Engineers to the Rescue (grades 4–6) girls will develop tools and resources to help you through the week. Learn what life is like for women engineers from special guest speaker presentations. Daisies through Cadettes will explore the It's Your World—Change It! Journey.

Survivor Girl**July 20–24****Grades K–3, \$150****Grades 4–6, \$170 (Wednesday Evening Program)**

Get back to Girl Scout basics by learning outdoor skills that will empower you to travel anywhere in the world. Practice age-appropriate ways to cook outdoors, tie knots, and find your way with a compass. Create memories with new friends in a tent you put up yourself, then take a hike through neighboring Heartwell Park. Daisies will earn

the Rosie petal, Brownies will earn the Hiking badge, Juniors will earn the Camping badge, and Cadettes will earn the Trailblazer badge.

Girls entering fourth grade and above are invited to join us for an extended day at camp that includes dinner and a campfire program.

**Play! Run! Fun!****July 27–31****Grades K–3, \$150****Grades 4–6, \$170**

Jump on in and explore the exciting world of sports. Like team sports? We'll play soccer and gaga. Prefer an individual challenge? Compete in a race against others your age. Never tried sports? Check out something new as you meet local athletes from the greater LA area and learn what inspires them to do their best. Girls in second grade and above will be invited to take aim and participate in the El Ranchito archery tournament. Daisies will earn the Lupe petal, Brownies will earn the Fair Play badge, Juniors will earn the Practice with Purpose badge, and Cadettes will earn the Good Sportsmanship badge.

Now We're Cookin'**Aug. 3–7****Grades K–3, \$150****Grades 4–6, \$170 (Wednesday Evening Program)**

Take advantage of the great

(El Ranchito programs continued)

outdoors and create delicious food while exploring various methods of outdoor cooking and food preparation. Juniors and Cadettes will create recipes and test dishes before competing in the first-ever Cast Iron Chef Competition featuring a special panel of guest judges. Daisies will earn the Safety award, Brownies will earn the Snack badge, Juniors will earn the Simple Meals badge, and Cadettes will earn the New Cuisines badge.

Girls entering fourth grade and above are invited to join us for an extended day at camp that includes dinner and a campfire program.

ARTrageous
August 10–14
Grades K–3, \$150
Grades 4–6, \$170

Get ready for five days of artistic fun! Create your own works of art from nature and experiment with

poetry, painting, and sculpting. Discover women artists from the past and present who have changed the world of art with their talent. Special guests from the community will join us to share their artwork and inspirations. Daisies will earn the Clover petal, Brownies will earn the Painting badge, Juniors will earn the Drawing badge, and Cadettes will earn the Comic Artist badge.



I can't wait to go to

Marine Landing!

Located in Long Beach, this camp offers Girl Scouts the opportunity to develop their boating skills, kayak, canoe, swim, and have fun in the sand at two of the local beaches. Girls will meet new friends, play games, make crafts and sing songs. Badge work, or other skill-building programming, is included in each week's activities. Juniors and Cadettes have the added bonus of paddle-boarding, sailing, and attending extended evening programs on certain weeks. Price includes: daily snacks, camp patch, any badges earned, a Marine Landing commemorative souvenir, and a group photo. For more information, please contact Jessie Chandler, jchandler@girlscoutsla.org.

EXTENDED CARE

Camp hours are 9 a.m. to 4 p.m. Before and After Care is available from 7 to 9 a.m. and 4 to 6 p.m. for \$50 per week. If only a.m. or only p.m. care is needed, the cost is \$25 per week. There is no daily rate. **Note: A \$10 late fee will be charged every 15 minutes after 6 p.m.**

PROGRAM AIDE (PA) LEADERSHIP EXPERIENCE

Girls must have completed eighth grade before applying. Are you ready to take your summer to the next level? Marine Landing girls will be waterside all session as they put their leadership training into action and learn how to plan and present activities to younger girls. Each session, PAs are assigned to units and work closely with both counselors and campers. Girls must have completed Program Aide Training before applying. Marine Landing PA Orientation is mandatory for any girl who will be a PA during the summer camp season. Two orientation sessions will be offered: at Marine Landing: May 21 and May 27, 5 to 7 p.m. at Marine Landing. For an application, please visit our camp page, girlscoutsla.org/pages/camp/camp.html. ***PAs will receive a shirt.**

SWIMMING EVALUATION

All girls will participate in a swim evaluation on the first day of camp. Girls of all swimming abilities may participate in all camp programming. Life vests are mandatory while boating and available for swimming.

PROGRAM CHANGES

Occasionally, camp programming may change with little or no notice. During beach closures, additional land-based programs such as crafts, water games, and special activities will be provided.

Marine Landing Family Nights

June 25, 4:30–7 p.m.

Aug. 6, 4:30–7 p.m.

Visit Marine Landing and meet the fantastic summer staff! All family members are welcome and are encouraged to bring a picnic dinner. While exploring the different areas of camp, family members five years of age and older may choose to participate in kayaking. Anyone planning on kayaking must have closed-toe shoes and clothing that can get wet. **Please note:** You don't have to have a camper attending that week to come to the open house. Anyone attending a Marine Landing camp over the summer is welcome to come.

Dare to Explore: A European Tour

June 15–19

Grades 1–3, \$180

Grades 4–8, \$200

Calling all explorers! Sail away on an imaginary tour of Europe, making stops in England, Italy, France, and Germany. Brownies will earn the Making Friends badge as they encounter new cultures, Juniors will earn the Digital Photography badge by capturing the best travel photos, and Cadettes earn the Financing Their Dreams badge. Get your special Marine Landing passport stamped at every stop along the way.

Girl Scout Art Walk

June 22–26

Grades 1–3, \$180

Grades 4–8, \$200

Ever dream of creating your very own masterpiece? Explore the artist's way as Brownies earn the Potter badge, Juniors earn the Drawing badge, and Cadettes earn the Comic Artist badge. From tie-dye to recreating Monet's lilies, campers will be splashing in creativity all week long. Invite your family to view our gallery show on Family Night, Thursday, June 25.

Super Hero Splash

June 29–July 3

Grades 1–3, \$180

Grades 4–8, \$200

Do you know what to do in an emergency situation? Bring your superhuman strength as we tie on our capes and swimsuits for a week of superhero activities. Throw out a life preserver, practice first-aid skills, and learn about CPR. Brownies, Juniors, and Cadettes will earn First-Aid badges, interview a first responder, and make first-aid kits. With daily boating activities and swim sessions, this week is sure to be a heart-pumping good time.

Chefs on the Seashore, Session 1
July 6–10

Grades 1–3, \$180

Grades 4–8, \$200

This is the week for food, fun, and sun! Learn cooking skills, create regional specialties, and discover the simplicity of homemade food. Brownies will earn the Snacks badge, Juniors will earn the Simple Meals badge, and Cadettes will earn the New Cuisines badge. After heating it up in the kitchen, girls will cool off in the water.

Surf, Sun & S'mores

July 13–17

Grades 1–3, \$180

Grades 4–8, \$200 (Thursday Evening Program)

It's a sweet life at Marine Landing! Enjoy the finer things summer has to offer, like days spent kayaking and paddle-boarding. Brownies will conduct experiments and awesome home science projects while earning their Home Scientist badge. Juniors will learn to build the best campfire to roast perfect s'mores while earning the Camper badge. Cadettes will complete steps 1, 2, and 5 of the Night Owl badge by creating a night of old-fashioned fun. **Girls entering fourth grade and above are invited to join us for an extended day at camp that includes dinner and a campfire program.**

Once Upon a Camp...

July 20–24

Grades 1–3, \$180

Grades 4–8, \$200 (Thursday Evening Program)

Enter a world of Girl Scout make-believe, fairytales, and imagination. Brownies and Cadettes will work toward their Girl Scout Way badges, while Juniors will earn the Playing the Past badge. This weeklong adventure will be filled with princess voyages and heroic journeys, including daily boating and swimming. **Girls entering fourth grade and above are invited to join us for an extended day at camp that includes dinner and a campfire program.**

SEAfari

July 27–31

Grades 1–3, \$180

Grades 4–8, \$200

Join our fleet as animal friends visit our shores and we explore the important connection between humans and pets. Brownies will complete steps 1, 2, and 4 of the Pets badge, Juniors will complete steps 1,2,3, and 5 of the Animal Habitats badge, and Cadettes will complete steps 1,2,3 and 4 of the Animal Helpers badge. Local habitats and the creatures that make the marina their home will be the hot topic this week, including a possible visit from a mystical mermaid.

Girl Scout Town, USA

Aug. 3–7

Grades 1–3, \$180

Grades 4–8, \$200

Do you dream of being mayor of your hometown? Well, here's your chance to be elected as Mayor of Marine Landing! Dive into what makes a great community, how you can make a difference, and meet a real-life change-maker. Brownies will earn the Celebrating Community badge, Juniors will earn the Inside Government badge, and Cadettes will earn the Finding Common Ground badge. Show off your Girl Scout hometown at Family Night, Thursday, Aug. 6.



Chefs on the Seashore, Session 2
Aug. 10–14

Grades 1–3, \$180

Grades 4–8, \$200

This is the week for food, fun, and sun! Learn cooking skills, create regional specialties, and discover the simplicity of homemade food. After heating it up in the kitchen, cool off in the water with boating and swimming activities. Brownies will earn the Snacks badge, Juniors will earn the Simple Meals badge, and Cadettes will earn the New Cuisines badge.





I can't wait to go to

Mariposa!

Mariposa Day Camp, located in Altadena, offers themed weeks with several different emphases from which girls can choose. Girls participate in new and traditional Girl Scout activities while making new friends, developing self-esteem, and making lasting memories. Every week the girls will enjoy our gaga (a kinder, gentler version of dodge ball) court, low ropes elements, and “kids kitchen” cooking activities. The themes for each week provide additional activities and enjoyment for the campers. Price includes: daily snacks, a Mariposa commemorative souvenir, any badges earned, and a camp group photo. For more information, please contact Brianna Colomb, bcolomb@girlscoutsla.org.

EXTENDED CARE

Camp hours are 9 a.m. to 4 p.m. Before and After Care is available from 7 to 9 a.m. and 4 to 6 p.m. for \$50 per week. If only a.m. or only p.m. care is needed, the cost is \$25 per week. There is no daily rate. **Note: A \$10 late fee will be charged every 15 minutes after 6 p.m.**

PROGRAM AIDE (PA) LEADERSHIP EXPERIENCE

Girls entering grades 7–12 must have completed Program Aide Training before applying. Mariposa Day Camp Summer PA training is mandatory for girls who will be PAs during the summer camp season. We will be offering two sessions: May 29, 6 to 8 p.m., and June 6, 10 a.m. to 12 p.m. at Mariposa Day Camp. PAs are assigned to units and work closely with counselors and campers. For an application, please visit our camp page, girlscoutsla.org/pages/camp/camp.html. ***PAs will receive a shirt.**

Creativity, Inc.

June 15–19

Grades K–6, \$160

Let your creativity shine! Explore all the ways you can express yourself through art. Learn about painting, tie-dying, drawing, and more.

Campers will work with a visiting artist on their masterpieces, and on Friday, the Camp Mariposa Gallery will be open for parents to see their

child's artwork. Brownies will earn the Painter badge, Juniors will earn the Drawing badge, and Cadettes will complete steps 3, 4, and 5 of the Book Artist badge.

Fashion Forward

June 22–26

Grades K–6, \$160

It's Fashion Week at Mariposa! Learn the basics of fashion design,

sewing, and jewelry-making as you create your own haute couture. Meet a fashion industry professional and show off designs at a special Friday fashion show. Brownies will earn the Inventor badge, Juniors will earn the Product Designer badge, and Cadettes will earn steps 1, 2, 4, and 5 of the Entrepreneur badge.

Pioneer Days

June 29–July 3

Grades K–3, \$160

Grades 4–6, \$175 (Thursday Evening Program)

Journey back in time to when Laura Ingalls Wilder was a young girl. Learn all about life on the prairie through hands-on activities like making butter, sewing, and playing games from the past. Explore your local government while getting ready to celebrate Independence Day. Friday will feature a special country fair for all campers! Brownies will earn the Celebrating Community badge, Juniors will earn the Citizen badge, and Cadettes will earn the Finding Common Ground badge.

Girls entering fourth grade and above are invited to join us for an extended day at camp that includes dinner and a campfire program.

Literally Fun

July 6–10

Grades K–6, \$160

Choose your own adventure and tell your story as we dive into the wide world of our imaginations, exploring favorite books and writing our own stories. Learn all about different ways to tell stories, from comic books to short fiction. We will even be joined by a special guest author! Brownies will earn the My Family Story badge, Juniors will earn the Scribe badge, and Cadettes will earn the Comic Artist badge.



STEAM Power! (Science, Technology, Engineering, Art, and Math)

July 13–17

Grades K–6, \$160

Make a miniature robot, launch film canister rockets, and mix up a batch of slime! This week is all about scientific discovery. STEAM will come alive as we create hands-on experiments and demonstrations. Brownies will learn about bubbles, slime, and static electricity while they earn the Home Scientist badge. Juniors and Cadettes will design their own video games while earning the Video Game Designer patch.

Lions, Tigers, and Girl Scouts—Oh My!

July 20–24

Grades K–6, \$160

Welcome to the jungle! This week is all about our furry, scaly, and slimy friends who call the jungle home. Learn about animals and ecosystems while brushing up on outdoor skills you need to visit furry friends in their natural habitats. Plus, meet a few special visitors from the animal kingdom! Brownies will earn the Hiker badge, Juniors will earn steps 1, 2, 3, and 4 of their Camper badge, and Cadettes will earn parts 1, 2, 3, and 4 of the Trailblazer badge.

Camp Hollywood

July 27–31

Grades K–6, \$160

Are you a born performer, or is directing more your style? Explore life on the stage and screen by writing a screenplay, honing acting skills through improvisation games, and discovering the art of movie makeup. Then, show off all you've learned in a Friday performance. Brownies will earn the Dancer badge, Juniors will earn the Musician badge, and Cadettes will earn the Screenwriter badge.

Food Frenzy!

Aug. 3–7

Grades K–3, \$160

Grades 4–6, \$175 (Thursday Evening Program)

Whether you're a chef in the making or a newbie in the kitchen, join us for a week-long culinary adventure in which you'll learn how to make delicious meals, satisfying snacks, and dazzling desserts. Also covered: nutrition, international cooking, and more! Brownies will earn the Snacks badge, Juniors will earn the Simple Meals badge, and Cadettes will earn the New Cuisines badge. **Girls entering fourth grade and above are invited to join us for an extended day at camp that includes a special outdoor cooking feast and a campfire program.**

Girl Scouts Investigate!

Aug. 10–14

Grades K–6, \$160

Can you discover who stole the cookies from the cookie jar? Sharpen your detective skills as we learn about the science behind forensics on our quest to unravel the mystery of the missing cookies! Learn about fingerprinting, DNA, and much more. Brownies will earn the Senses badge, Juniors will earn the Detective badge, and Cadettes will earn the Special Agent badge.



I can't wait to go to

Covina Program Center!

SPECIALTY DAY CAMP (GIRLS ONLY)

Located in Hollenbeck Park in Covina, this camp provides a great environment for girls to get a taste of camp and add to their Girl Scout memories. Girls are grouped according to age level and assigned to small units for individual activities. Price includes: daily snack, program activities, and a patch. Girls will need to bring a lunch and a reusable water bottle each day. Camp hours are 9 a.m. to 4 p.m. For more information, please contact Monica Paniagua, mpaniagua@girlscoutsla.org.

Extended Care will not be offered for this session.

PROGRAM AIDE (PA) LEADERSHIP EXPERIENCE

Girls entering grades 7–12 must have completed Program Aide Training prior to the camp session. PAs are assigned to units and work closely with volunteers, staff and campers. For more information or to request an application, please contact Monica Paniagua, mpaniagua@girlscoutsla.org.

ADULT VOLUNTEERS

We are looking for volunteers to help facilitate a fun and successful camp. Opportunities for both one day and multi-day are available. For more information or to volunteer, please contact Monica Paniagua, mpaniagua@girlscoutsla.org.

Girl Scouts in the USA!

July 6–10

Grades K–5, \$140

Join the party as we celebrate living in the USA! Travel across America with us as we explore what makes the nation so great. Each day is an adventure as we explore the sights, sounds, and foods from coast to coast. Learn about special places to visit, local culture, and more. Daisies will work on earning the Zinni and Gerri petals, Brownies will work on steps 1 and 3 of their My Family Story badge and steps 2 and 5 of the Celebrating Community badge, Juniors will work on steps 2 of the Playing the Past badge and step 3 of the Inside Government badge.



SPECIALTY DAY CAMP (GIRLS ONLY)

Nature Rocks Detective Agency – Santa Clarita – Girls Only

June 22–26

Grades 2–7, \$140

We need some keen-eyed gumshoes to help solve mysteries at William S. Hart Park in Newhall! While sifting through clues, decoding messages, and learning about DNA, Brownies will earn the Letterboxing and Senses badges, Juniors will earn the Geocaching and Detective badges, and incoming sixth- and seventh-grade Cadettes will earn the Special Agent and LiA badges (a new hybrid camper/leadership experience). Campers will also have fun with crafts, songs, snack cooking, and skits. Girls must bring a sack dinner and refillable water bottle each day.

Price includes: daily snack, reusable water bottle, camp patch, badges earned, and a group photo. Camp hours are 2–7 p.m. For more information, please contact Christine Colvin, ccolvin@girlscoutsla.org.

Program Aide (PA)

Leadership Experience: Girls must have completed Program Aide Training prior to the camp session and must be at least incoming eighth graders for the 2015–16 school year. PAs are assigned to units and work closely with volunteers, staff, and campers. For more information or

to request an application, please contact Christine Colvin, ccolvin@girlscoutsla.org.

Adult Volunteers:

We are looking for volunteers to help facilitate a fun and successful camp. Opportunities for both one day and multi-day are available. For more information or to volunteer, please contact Christine Colvin, ccolvin@girlscoutsla.org.

MAGIC (Mentoring a Girl in Construction) – El Monte – Girls Only

June 22–26

Grades 8–12, \$50

Get prepared with a lifetime of marketable, hands-on skills! This camp provides a supportive and nurturing environment for girls to explore and develop basic skills in carpentry, electrical engineering, and even plumbing. Tackle individual and group projects that will instill a “we can do it” mindset and create greater self-confidence and better self-esteem. Meet and be inspired by women role models who are successful architects, engineers, business owners, and project superintendents. Girls will leave with valuable resource information for college and tradeswoman scholarships. Step out of your comfort zone and experience the exhilaration of what the Mentoring a Girl in

Construction Summer Camp offers!

Price includes: Camp T-shirt, daily lunch, and a take-home item. Hours are 8 a.m.–4 p.m. Participants **MUST** commit to attending and participating all camp days. Health Information, Consent for Treatment/Waiver, and Photo Release Forms must be completed. Appropriate clothing and shoes are required (no shorts or sandals). The San Gabriel Valley Conservation Corp and NAWIC are offsetting partial program costs to make this program extremely affordable at \$50 for the week. For more information, please contact Kristen Simon, ksimon@girlscoutsla.org.

Summer Safari: Storm on the Savannah – Antelope Valley – Girls Only

July 6–10

Grades 2–5, \$140

Summer Safari returns to Desert Sands Park and this time we’ve got some weather on the horizon. We’re going to utilize the storm to work on and earn the It’s Your Planet—Love it! Journeys; *Wonders of Water* for Brownies and *Let’s Get Moving!* for Juniors. Girls will also make crafts, sing camp songs, and perform skits. Girls must bring a sack lunch and refillable water bottle each day.

Price includes: daily snack, reusable water bottle, patch, Journey badges earned, and group photo. Camp hours are 9 a.m.—4 p.m. Extended care will not be offered for this program. This camp will utilize both outdoor and indoor facilities. For more information, please contact Christine Colvin, ccolvin@girlscoutsla.org.

Program Aide (PA)
Leadership Experience:
 Girls must have completed Program Aide Training prior to the camp session. PAs are assigned to units and work closely with volunteers, staff, and campers. For more information or to request an application, please contact Christine Colvin, ccolvin@girlscoutsla.org.

Adult Volunteers: Help facilitate a fun and successful camp! Opportunities for both one day and multi-day are available. For more information or to volunteer, please contact Christine Colvin, ccolvin@girlscoutsla.org.

**Girl Scouts: Then and Now—
 San Fernando— Girls Only
 July 13–17
 Grades 1–5, \$140**

Discover what it's like to experience camp as a Girl Scout in 2015 while getting back to basics like Juliette Low did in the great outdoors. Participate in the modern day STE[A]M program by making a miniature robot, creating sticky slime, and launching a rocket. Venture back in time and practice knot-tying, and learn first-aid skills and fire safety. Cook in the outdoors and navigate your way through a wildlife reserve and bird sanctuary in beautiful Woodley Park. Traditional camp crafts, songs, and team-building games will round out your week at camp.

Price includes: daily snacks, camp

patch, and all activities. Camp hours are 9 a.m.—4 p.m. Extended care will not be offered for this program. For more information, please contact Molly Briggs, mbriggs@girlscoutsla.org.

Program Aide (PA)
Leadership Experience:
 Girls must have completed Program Aide Training prior to the camp session. PAs are assigned to units and work closely with volunteers, staff, and campers. For more information please contact Molly Briggs, mbriggs@girlscoutsla.org.

Adult Volunteers:
 We are looking for volunteers to help facilitate a fun and successful camp. Opportunities for both one day and multi-day are available. For more information please contact Molly Briggs, mbriggs@girlscoutsla.org.

**SPECIALTY OVERNIGHT CAMP
 (GIRLS ONLY)**

**Survivor: Skyland! –
 Skyland Ranch – Girls Only
 June 21–25
 Grades 4–9, \$300**

Are you ready to accept the challenge? Picture this: Skyland Ranch Summer Camp 2015. You are 5,000 feet high in the magnificent mountains. There are pine and oak trees all around you. You exit the bus and suddenly you find yourself in a tribe. At sunset you face Tribal Council. Will your tribe gain immunity? Only the skills you have learned so far as a Girl Scout and those you gain at Skyland Ranch will save you! This is an experience you won't want to miss!

Price Includes: meals, snacks, activities, and a patch. Bus transportation to and from

Skyland Ranch from the Long Beach Service Center is also included. Please note: Vegan diets cannot be accommodated. For more information, please contact Elizabeth Chadwick, echadwick@girlscoutsla.org.

**Survivor: Skyland! –
 Skyland Ranch – Girls Only
 June 20–25
 Grades 10–12, \$180 – Program
 Aide Leadership Experience**

Put your leadership skills into practice while assisting counselors. PAs are assigned to cabins or outdoor units and participate in some camper activities. Transportation is not provided. Girls must have completed Program Aide Training. PAs are assigned to units and work closely with counselors and campers. For an application, please contact Deanne Moore, dmoore@girlscoutsla.org.

**Camp Surf – Troops Only
 June 19–21 Session I
 Grades 4–12, \$150 (girls &
 adults)
 July 24–26 Session II
 Grades 4–12, \$150 (girls &
 adults)**

Surf all day and sleep under the stars at night! Troops tent camp at Imperial Beach (near San Diego) and enjoy surf lessons, archery, a climbing tower, body boarding, or simply relaxing on the beach. Grab some sunscreen, wax a board, and catch the waves! Ability to swim facedown in deep water is required.

Price includes: camp site, all activities, meals, snacks, and introductory surf instruction. Transportation and camping supplies (tents, sleeping bags, etc.) are not provided. For more information, please contact Lisa Axelrod, laxelrod@girlscoutsla.org.

Island of the Blue Dolphins – Girls Only

**July 9–11 Session I
Grades 7–12, \$290**

Come along on an island adventure and experience a whole new side of California! On a guided kayak excursion, discover beautiful and mysterious sea caves and kelp forests abundant with marine life. Learn to snorkel amongst rare, protected marine species, and hike to breathtaking peaks—all while exercising leadership skills and connecting with your Girl Scout sisters! Camp in tents under the night sky—this is your chance to explore history, discover a new world, and challenge yourself to try new adventures!

Price includes: round-trip boat transportation, campsite, kayaks (lessons and gear), snorkeling equipment (not including wetsuit), meals, snacks, a patch, and knowledgeable island guides. It is recommended that participants are comfortable with ocean swimming. Excursion departs from and returns to the Ventura Harbor. For more information, please contact Elizabeth Chadwick, echadwick@girlscoutsla.org.



Ocean Fun on Catalina Island– Girls or Troops

**Sept. 11–13 Session I
Grades 4–12, \$200 (girls &
adults)**

**Grades 9–12, \$145 (Program
Aide Leadership Experience)**

Oct. 2–4 Session 2

**Grades 4–12, \$200 (girls &
adults)**

**Grades 9–12, \$145 (Program
Aide Leadership Experience)**

Ready for a weekend of island fun? This is an exciting opportunity to kayak, snorkel, swim, learn about marine life, and accomplish badge work in a beautifully preserved area of Catalina Island. Plus, show off your talent in a center stage campfire performance on Saturday night. Troops are welcome to plan their own additional programs to include sports, hiking, and beachcombing.

This is a troop and independent girl's event. Girl/adult ratio will be in accordance with Safety Wise standards that can be found in *2014–15 Volunteer Essentials*. The camp is based out of Howland's Landing on Catalina Island, near Two Harbors. Participants must use GSGLA's transportation. Special arrangements cannot be made. A troop roster of all attending is required.

Price includes: round-trip boat transportation, waterfront programs, accommodations, a patch, and all meals. Transportation details will be emailed to participants as we get closer to our departure date. For more information, please contact Brianna Colomb, bcolomb@girlscoutsla.org.

Program Aide (PA)
Leadership Experience:
Girls must have completed
Program Aide Training prior to the
camp session. PAs are assigned

to work closely with staff and campers. For more information or to request an application, please contact Brianna Colomb, bcolomb@girlscoutsla.org.

SPECIALTY OVERNIGHT CAMP (FAMILIES OR TROOPS)

aMAZE! Journey Weekend at Osito Rancho (NEW!) – Troops Only

June 12–14

**Grades 6–8, \$100 (girls &
adults)**

Spend the weekend working on the aMAZE! Journey. Join other Cadettes in the maze of friendships and discover how to create peace together. On the Journey, you will earn the Interact and Diplomat awards. Pre- and post-work is required to complete the Peacemaker award. Attending adults participate in their own concurrent programming on mentoring Cadettes.

Price includes: meals and lodging in platform tents with cots. All facilities have hot and cold running water, flush toilets and showers. For more information, please contact Elizabeth Gerbino egerbino@girlscoutsla.org.

Island of the Blue Dolphins – Families or Troops

July 24–26 Session II

**Grades 7–12, \$290 (girls &
adults)**

Enjoy an action-packed weekend of exploring the Channel Islands by kayak, snorkel, and hiking boots! While kayaking, discover beautiful and mysterious sea caves and kelp forests abundant with marine life. Snorkel amongst rare, protected marine species and hike to breathtaking peaks, all while learning about the history and geology of the islands. Camp in tents under the night sky and

let the stars guide your dreams. This is a chance to explore history, discover a new world, and challenge yourself to try new adventures!

Price includes: round-trip boat transportation, campsite, kayaks (lessons and gear), snorkeling equipment, meals, snacks, a patch, and knowledgeable island guides. It is recommended that participants are comfortable with ocean swimming. Excursion departs from and returns to Ventura Harbor. For more information, please contact Elizabeth Chadwick, echadwick@girlscoutsla.org.



Family Camp at Osito Rancho – Families or Troops

Aug. 14–16 Session I

Aug. 21–23 Session II

All Age Levels, \$130 (per person ages 4 years and up, no cost for children under 4 years)

Enjoy the magic of Camp Osito Rancho located in Big Bear for your next Girl Scout family vacation! The weekend provides a variety of activities, including horse trail riding for fourth graders and above, and horse lessons for younger children. Plus, there is swimming, archery, canoeing, a ropes course, and a zip line (restricted to eighth graders and older with a weight restriction of 80–250 lbs). At the end of the day, make s'mores and sing around the campfire. Most activities have age restrictions of six years and above, but there is a game area and heated pool for younger family members. (Please note: The terrain is rugged and at an elevation of 7,500 feet.) Price includes: meals and lodging in platform tents with cots. All facilities have hot and cold running water, flush toilets, and showers. Please note: Adults must accompany their children at all times. For more information, please contact Carolyn Goss, cgoss@girlscoutsla.org.

Osito Rancho Resident Camp – Work Party Weekends

May 29–31 Session I

All Age Levels, Free

Sept. 11–13 Session II

All Age Levels, Free

Your help is needed in June to get camp ready for the summer and in September to get camp ready for the winter. Families, troops, groups, or individuals may register. There is something for everyone to do. Work party weekends are an opportunity to get outside and work in one of the most beautiful places in the San Bernardino Mountains. Join us at Camp Osito Rancho and participate in projects that will improve our camp. GSGLA will provide helpers with a place to sleep and good healthy meals to keep you going. Many projects are labor intensive; however, only enthusiasm is required. Accommodations include either dormitory style lodging or our platform tents (cots included). All facilities have hot and cold running water, flush toilets, and showers. For more information, please contact Carolyn Goss, cgoss@girlscoutsla.org.



CAMPER INFORMATION: (please type or print)

Camper First and Last Name _____ Nickname (if applicable) _____

Address _____ City _____ State _____ Zip Code _____

Phone _____ Email (please be sure to provide an email you actively use) _____

Age _____ DOB (MM/DD/YYYY) _____ Current Grade _____ Troop _____ Girl Scout Council (if not GSGLA) _____

How did you hear about camp? Friend Troop Leader Previous camper Camp brochure Website/ e-Newsletter

Optional: Name ONE girl your camper would like to be grouped with. Both campers must request each other. Requests are not guaranteed. _____ Phone _____

PARENT/GUARDIAN INFORMATION:

(1) Parent/ Guardian Name _____ Home Phone _____ Cell Phone _____

Address _____ City _____ State _____ Zip Code _____

(2) Parent /Guardian Name _____ Home Phone _____ Cell Phone _____

Address (if different) _____ City _____ State _____ Zip Code _____

EMERGENCY CONTACT:

Emergency Contact Name _____ Phone _____ Relationship to Camper _____

CAMP SESSION SELECTION:

Camp Property Name	Camp Session Title	Camp Date	Camp Fee	Weekly Extended Care (optional)		Subtotal
				AM (\$25)	PM (\$25)	
① _____	_____	_____	_____	_____	_____	_____
② _____	_____	_____	_____	_____	_____	_____
③ _____	_____	_____	_____	_____	_____	_____
④ _____	_____	_____	_____	_____	_____	_____
Add one-time \$15.00 fee if NOT a Girl Scout						_____
TOTAL						_____

PERMISSION:

As legal guardian, I give permission for the above girl to attend camp and participate in all activities, for her to be transported out of camp during the camp session for programs and other purposes, and for emergency treatment to be given to her in case of injury or illness, unless otherwise stated. I understand that if she is not currently a registered Girl Scout, an additional one-time \$15.00 membership fee will be applied to the overall cost of camp.

List Exceptions for Participant (if any):

 Parent/Guardian Signature _____ Date _____

Check here if you DO NOT authorize GSGLA to use images of camper for promotion of Girl Scouts.

PAYMENT (Check one): \$25 DEPOSIT (PER SESSION) or TOTAL AMOUNT

PAYMENT METHOD (Check one):

- Camper has applied for financial aid before May 8, 2015 deadline — Family Contribution is required \$ _____
- Check # _____ (payable to Girl Scouts of Greater Los Angeles) is attached
- Charge to credit card Visa MasterCard AmEx Discover

Cardholder Name _____ Credit Card _____ Exp Date _____ Cardholder Signature _____



Osito Rancho Resident Camp Registration Form

2015

CAMPER INFORMATION: *(please type or print)*

Camper First and Last Name _____ Nickname (if applicable) _____

Address _____ City _____ State _____ Zip Code _____

Phone _____ Email (please be sure to provide an email you actively use) _____

Age _____ DOB (MM/DD/YYYY) _____ Current Grade _____ Troop _____ Girl Scout Council (if not GSGLA) _____

How did you hear about camp? Friend Troop Leader Previous camper Camp brochure Website/Newsletter

Optional: Name ONE girl your camper would like to be grouped with. Both campers must request each other. Requests are not guaranteed. _____ Phone _____

PARENT/GUARDIAN INFORMATION:

(1) Parent/ Guardian Name _____ Home Phone _____ Cell Phone _____

Address _____ City _____ State _____ Zip Code _____

(2) Parent/Guardian Name _____ Home Phone _____ Cell Phone _____

Address (if different) _____ City _____ State _____ Zip Code _____

EMERGENCY CONTACT:

Emergency Contact Name _____ Phone _____ Relationship to Camper _____

CAMP OSITO-RANCHO SESSION SELECTION:

Session Number	Camp Title	Date of Camp	Camp Fee	Subtotal
1	_____	_____	_____	_____
2	_____	_____	_____	_____
			Add one-time \$15.00 fee if NOT a Girl Scout	\$ _____
			TOTAL	\$ _____

BUS DROP-OFF/PICK-UP LOCATION (Check one):

Camp fees include bus transportation to and from Camp Osito-Rancho. Please select the most convenient drop-off/pick-up location.

1

Arcadia Service Center
101 E Wheeler Ave.
Arcadia, CA 91006

2

Long Beach Service Center
4040 N Bellflower Blvd
Long Beach, CA 90808

3

Woodland Hills Service Center
20931 Burbank Blvd, Ste A
Woodland Hills, CA 91367

PERMISSION:

As legal guardian, I give permission for the above girl to attend camp and participate in all activities, for her to be transported out of camp during the camp session for programs and other purposes, and for emergency treatment to be given to her in case of injury or illness, unless otherwise stated. I understand that if she is not currently a registered Girl Scout, an additional one-time \$15.00 membership fee will be applied to the overall cost of camp.

List Exceptions for Participant (if any)

Parent/Guardian Signature _____ Date _____

Check here if you DO NOT authorize GSGLA to use images of camper for promotion of Girl Scouts.

PAYMENT (Check one): \$95.00 DEPOSIT (PER SESSION) or **TOTAL AMOUNT**

PAYMENT METHOD (Check one):

- Camper has applied for financial aid before **May 8, 2015** (deadline — *Family Contribution is required*) \$ _____
- Check # _____ (payable to Girl Scouts of Greater Los Angeles) is attached
- Charge to credit card. Visa MasterCard AmEx Discover

Cardholder Name _____ Credit Card _____ Exp Date _____ Cardholder Signature _____

1/2015

CAMPER INFORMATION: (please type or print)

Camper First and Last Name _____ Nickname (if applicable) _____

Address _____ City _____ State _____ Zip Code _____

Phone _____ Email (please be sure to provide an email you actively use) _____

Age _____ DOB (MM/DD/YYYY) _____ Current Grade _____ Troop _____ Girl Scout Council (if not GSGLA) _____

How did you hear about camp? Friend Troop Leader Previous camper Camp brochure Website/ e-Newsletter

Optional: Name ONE girl your camper would like to be grouped with. Both campers must request each other. Requests are not guaranteed. _____ Phone _____

PARENT/GUARDIAN INFORMATION:

(1) Parent/Guardian Name _____ Home Phone _____ Cell Phone _____

Address _____ City _____ State _____ Zip Code _____

(2) Parent/Guardian Name _____ Home Phone _____ Cell Phone _____

Address (if different) _____ City _____ State _____ Zip Code _____

EMERGENCY CONTACT:

Emergency Contact Name _____ Phone _____ Relationship to Camper _____

CAMP SESSION SELECTION:

Camp Property Name	Camp Session Title	Camp Date	Camp Fee	Weekly Extended Care (if applicable)		Subtotal
				AM (\$25)	PM (\$25)	
① _____	_____	_____	_____	_____	_____	_____
② _____	_____	_____	_____	_____	_____	_____
③ _____	_____	_____	_____	_____	_____	_____
④ _____	_____	_____	_____	_____	_____	_____
Add one-time \$15.00 fee if NOT a Girl Scout						\$ _____
TOTAL						\$ _____

PERMISSION:

As legal guardian, I give permission for the above girl to attend camp and participate in all activities, for her to be transported out of camp during the camp session for programs and other purposes, and for emergency treatment to be given to her in case of injury or illness, unless otherwise stated. I understand that if she is not currently a registered Girl Scout, an additional one-time \$15.00 membership fee will be applied to the overall cost of camp.

List Exceptions for Participant (if any):

X

Parent/Guardian Signature _____ Date _____

Check here if you DO NOT authorize GSGLA to use images of camper for promotion of Girl Scouts.

 PAYMENT
 TOTAL AMOUNT REQUIRED

Deposits are not accepted for Specialty Camps.

 PAYMENT METHOD (Check one):

- Camper has applied for financial aid before **May 8, 2015** deadline — **Family Contribution is required \$** _____
- Check # _____ (payable to Girl Scouts of Greater Los Angeles) is attached
- Charge to credit card Visa MasterCard AmEx Discover

Cardholder Name _____ Credit Card _____ Exp Date _____ X
Cardholder Signature _____

FINANCIAL AID CAMPSHIP APPLICATION

2015

APPLICATION SUBMISSION DEADLINE: May 8, 2015
INCOMPLETE APPLICATIONS WILL NOT BE CONSIDERED

Please type or print. Complete only if applying for financial assistance. Camperships provide financial assistance for girls who cannot otherwise afford a camping experience. Campership funds are made possible by donations. Each applicant will be considered for one resident/specialty camp or two day camps. Camperships vary in amount and may not cover the entire cost of a camp(s).

If you have any questions regarding a campership you may contact Daniel Martinez at 626 677-2245 or by email danielmartinez@gslosangeles.org.

Por favor escriba con letra de molde en los dos lados de esta aplicación. Hay fondos disponibles para becas gracias a donaciones. Las becas ofrecen ayuda financiera a las niñas que no tienen los medios para asistir al campamento. Cada niña es considerada para un campamento de residencia/especialidad o dos campamentos de día. Las becas varían en cantidad y no necesariamente cubren el costo completamente de campamento. Préstamos están disponibles para las que han solicitado asistencia financiera pero no cualifican. Candidatas serán notificado si este es una opción.

CAMPER INFORMATION/ INFORMACION DE LA NIÑA:

Camper First and Last Name/Nombre y Apellido de la Niña _____ Telephone/Teléfono _____

Address/Domicilio _____ City/Ciudad _____ Zip Code/Código Postal _____

Email/Correo Electrónico _____

Is she currently a Girl Scout?/Es Girl Scout la niña? Yes/Sí No/No

Troop #/N° de Tropa _____ Girl Scout Council/Concilio _____

PARENT/GUARDIAN INFORMATION/ INFORMACION DE LOS PADRES:

Parent/ Guardian Name/Nombre de Padre o Guardián _____ Telephone/Teléfono _____

Address/Domicilio _____ City/Ciudad _____ Zip Code/ Código Postal _____

Total number of people in household (including camper)/Numero total de personas que usted mantiene en casa (incluyendo la campista): _____

Ages of dependent children/Edades de los niños: _____

Total yearly household income not including social service aid/Ingreso anual total de la familia sin contar la asistencia pública: \$ _____

Parent/ Guardian occupation/Oficio(s) de los padres o tutores: _____

Does your family receive social service aid?/¿Recibe a su familia asistencia social? Yes/Sí No/No

If currently receiving aid, write in the 11 digit case number/Si recibe asistencia social por favor escriba los 11 números de su caso: _____

CAMPER HISTORY/HISTORIA DEL CAMPISTA:

Has your camper attended camp before?/¿Ha asistido su campista a algún campamento anteriormente? Yes/Sí No/No Date/Fecha: _____

Did she receive a campership?/¿Recibió una beca? Yes/Sí No/No

If yes, what type?/Si contesto que sí ¿qué tipo? _____

THE FOLLOWING MUST BE ANSWERED FOR CONSIDERATION/EL SIGUIENTE DEBE SER CONTESTADO PARA CONSIDERACIÓN:

- Dollar Amount family will contribute to camp cost/ La cantidad en dólares que su familia va a contribuir al costo: \$ _____
THIS PAYMENT MUST BE PROVIDED AT TIME OF REGISTRATION!
 (ESTE PAGO DEBE SER DADO EN EL MOMENTO DE INSCRIPCIÓN)
- Amount requested for financial assistance/¿Cuánto solicita para asistencia financiera? \$ _____

PARENT/GUARDIAN SIGNATURE/FIRMA:

Parent/Guardian Signature/Firma de Padres o Guardian _____ Date/Fecha: _____

IMPORTANT! COMPLETE THE OTHER SIDE OF THIS FORM./¡IMPORTANTE! LLENE EL OTRO LADO DE ESTA SOLICITUD.



FINANCIAL AID CAMPSHIP APPLICATION

2015

APPLICATION SUBMISSION DEADLINE: May 8, 2015
INCOMPLETE APPLICATIONS WILL NOT BE CONSIDERED

Please provide complete responses for all the questions below. Your responses will help us provide information to funding sources.
Es importante que responda por completo a todas las preguntas. Favor de dar detalles. Sus respuestas nos ayudarán a proporcionar información a fuentes de apoyo económico. Su nombre no se incluirá en la información que se envía a los patrocinadores.

Why does your child need financial assistance?/ ¿Por qué necesita su niña asistencia financiera?

Describe any problems (physical or emotional) or any tragic or traumatic event the child or family has encountered that impacts the need to request financial assistance./ ¿Ha sufrido la niña o la familia alguna tragedia o evento traumático, algún problema físico o emocional?

What are the child's positive qualities (initiative, determination, school involvement, helps at home, work skills)?/ ¿Qué cualidades positivas demuestra la niña (la iniciativa, la determinación, se distingue en sus estudios, ayuda en la casa, habilidades de trabajo)?

How will the child benefit from the camp experience?/ ¿Cómo puede beneficiar la niña de la oportunidad de participar en el campamento?

SUBMISSION INSTRUCTIONS:

Mail completed forms, 2014 proof of income for all contributing members of the household, family contribute, and camp registration to: Girl Scouts of Greater Los Angeles, 9525 Monte Vista Ave, Montclair, CA 91763, C/O FA-Camp, or fax to (909) 624-7928 **before May 8, 2015.**

Los padres o los tutores deben llenar esta solicitud si asistencia financiera es necesaria. Envíe la solicitud, prueba de ingresos, cantidad que su familia puede contribuir al costo de campamento y la registración de campamento a: Girl Scouts of Greater LA, Camp Registrar, 9525 Monte Vista Ave., Montclair, CA 91763, C/O Camp Registrar, o fax a (909) 624-7928 antes de Mayo 8, 2015. Se requiere comprobante de ingresos (declaración de impuestos de el año 2014 o fátón de cheque reciente de cada miembro que contribuye en la casa).

12011

IMPORTANT! USE ADDITIONAL SHEETS IF NECESSARY. /IMPORTANTE! USE HOJAS ADICIONALES SI ES NECESARIO.

Rules of acceptance and participation in the program are the same for everyone without regard to race, color, ethnicity, creed, national origin, age, and socioeconomic or special needs status, providing program and membership requirements are met. *Las reglas para admisión y participación en el programa de campamento son las mismas para todos sin considerar la raza, el color, el grupo étnico, las creencias, el origen nacional, la edad, el estado socioeconómico, ni alguna necesidad especial con tal de que cumpla con los otros requisitos del programa, y sea miembro de las Girl Scouts.*

Girl Scouts of Greater Los Angeles • 9525 Monte Vista Ave. • Montclair, CA 91763 • Phone (626) 677-2245 • Fax (909) 624-7928 • www.girlscoutsla.org

IMPORTANT! COMPLETE THE OTHER SIDE OF THIS FORM./IMPORTANTE! LLENE EL OTRO LADO DE ESTA SOLICITUD.

PROGRAM GUIDE



General Information

Girl Scouts of Greater Los Angeles programs through September 2015 are listed in this program guide section. Registration open and close dates all vary per program. You must register at least two weeks prior to each event. All information is subject to change. Registration is available through the online program calendar unless otherwise noted.

Find details about these events at girlscoutsla.org. Click on “Calendar” under the “Activities & Events” tab. Check the program calendar frequently, as pop-up programs are often added throughout the year. Stay up to date on the latest program information by signing up for GSGLA’s monthly e-newsletter, *Great News!* The sign-up form is on the home page of girlscoutsla.org. (Troop leaders also receive monthly grade-level newsletters with program listings.)

NOTE: Camperships do not apply for any of these programs. Camperships are only for summer camp programs, which are listed on pages 9-23.

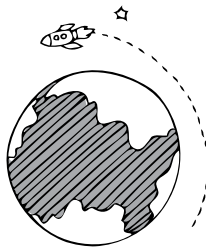
GS LEVEL KEY

- D** DAISY
- B** BROWNIE
- J** JUNIOR
- C** CADETTE
- S** SENIOR
- A** AMBASSADOR



I can't wait for

May!



FIRST ROBOTICS (D)(B)(J)(C)(S)(A)
REGISTRATION OPENS

May 1
Grades K-12

Robotics is all about team work, creativity, and hands-on fun! Gain engineering and tech skills by learning to build and test robotic creations. The robotics season runs from September through December. Qualifying tournaments are held throughout November, and championships at the beginning of December. GSGLA holds coaches trainings at the Montrose Program Center throughout the months of June and August, at no charge, for any troop leaders interested in finding out how their troop can participate in robotics. Note: Non-Girl Scouts must register as members before joining the robotics program. Troops or individual girls may apply. For more information, contact Kris Simon, ksimon@girlscoutsla.org.

- **Junior FIRST Lego League (JrFLL):** Daisy and Brownie Girl Scouts (6 to 9 years of age as of Jan. 1, 2015) are eligible. \$150 team program fee for new teams. Visit girlscoutsla.org/pages/events/Robots_and_Fun.html for FAQs and registration info.
- **FIRST Lego League (FLL):** Junior and Cadette Girl Scouts (9 to 14 years of age as of Jan. 1, 2015) are eligible. \$375 team program fee for new teams. Please visit girlscoutsla.org/pages/events/robotsandmore.html for FAQs and registration info.
- **FTC (FIRST Tech Challenge):** Senior and Ambassador Girl Scouts (14 to 18 years of age as of Jan. 2015) are eligible for the program. Girls will join the veteran team Rock N' Roll Robots. Cost varies depending on number of participating girls. To sample the program, please see the listing for their weekend camp in August, on page 33.

FEED YOUR NEIGHBOR (D)(B)(J)(C)(S)(A)

May 2

Help Girl Scouts of Greater Los Angeles in the fight against hunger! Participate in the Feed Your Neighbor Food Drive & Service Day, learn about the hunger crisis, and do something about it. Check the website for details and booth sign-up information. Booths are in all council regions: girlscoutsla.org/pages/events/service_saturday.html.

STARGAZING & STORYTELLING (B)(J)

May 2-3, Overnight

Grades 2-5, \$35 registered girl/\$45 non-registered girl, \$25 adult
Mariposa

Join us for an overnight you won't forget! Gaze at the stars and learn the legends about constellations. Special guest speakers will inspire girls and share information about the many careers that relate to astronomy and space exploration. Late night s'mores and breakfast the next morning will be provided. Bring your warm clothes and sleeping bags!

GOLD AWARD WORKSHOP (S)(A)

May 4, 6:30-8:30 p.m. Woodland Hills Service Center
May 12, 6-8 p.m. Long Beach Service Center
May 21, 4-6 p.m. Santa Clarita Service Center
May 23, 9:30-11:30 a.m. Johnstone Program Center
May 26, 6:30-8:30 p.m. Arcadia Service Center
Grades 9-12, \$15 registered girl/\$25 non-registered girl, \$10 adult

This workshop prepares Senior and Ambassador Girl Scouts to embark upon the Gold Award process. Girls learn how to choose and design a project to be measurable and sustainable. The workshop covers the proposal, interview, execution, and pre- and post-paperwork. To attend, girls should be near completion of their prerequisites. Leaders, advisors, and parents are encouraged to attend.

PROGRAM AIDE TRAINING **C S A**

May 9, 10 a.m.–3:30 p.m. Arcadia Service Center

May 16, 9:30 a.m.–3 p.m. Santa Clarita Service Center

May 30, 9:30 a.m.–3 p.m. Palmdale Service Center

Grades 6–12, \$25 registered girl/\$35 non-registered girl

Be a role model and deepen your understanding of leadership development! Program aides guide younger girls to be leaders in their own lives and in the world. This training helps girls gain skills needed to work with younger girls, peers, and adult volunteers. Program aides may put their skills into practice working at council programs, summer programs, and at troop- and service unit-led events.

SILVER AWARD CEREMONIES **C S A**

May 12 – Southeast

May 13 – Southwest

May 14 – North

Be sure to get your Silver Award paperwork into your local service center leadership program specialist by March 1 to be included in the invite-only Silver Award Ceremony! Girls and troops who have completed the award and submitted paperwork on-time will be invited to a ceremony within their region to celebrate their accomplishments. Tickets will also be available for family members and friends wishing to attend. For more information, please consult the website: girlscoutsla.org/pages/events/silver_award.html.

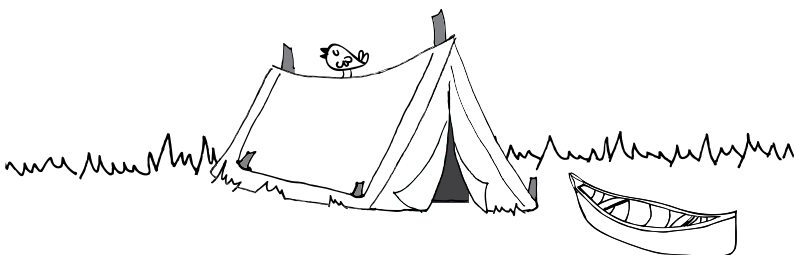
ADVENTURES INTO THE GREAT OUTDOORS (SESSION 1) **D B J C S A**

May 15–17, Overnight

Grades K–12, \$100 registered girl/\$110 non-registered girl, \$100 adult

Camp Osito Rancho

Ready to take your group, troop, or family on a weekend of fun and high adventure? Begin your adventure bouldering on rocks, wandering trails, and investigating the natural world. Have fun on our climbing wall and high ropes course. Once you have tried the challenge course, head to the pond for a beginning canoe lesson. Plus, learn survival skills like building shelters and water filters.





I can't wait for

June & July!

GOLD AWARD WORKSHOP (S) (A)

June 4, 4–6 p.m. Palmdale Service Center
June 16, 6–8 p.m. Marina del Rey Service Center
June 20, 9:30–11:30 a.m. Johnstone Program Center
June 23, 6:30–8:30 p.m. Arcadia Service Center
Grades 9–12, \$15 registered girl/\$25 non-registered girl, \$10 adult

This workshop prepares Senior and Ambassador Girl Scouts to embark upon the Gold Award process. Girls learn how to choose and design a project to be measurable and sustainable. The workshop covers the proposal, interview, execution, and pre- and post-paperwork. To attend, girls should be near completion of their prerequisites. Leaders, advisors, and parents are encouraged to attend.

GOLD AWARD CEREMONY (S) (A)

June 6
Pasadena Civic Auditorium

Our Gold Award honorees are celebrated by family, friends, volunteers, staff, and special guests at this annual event. Details TBA. For updated information check girlscoutsla.org/pages/events/gold_award.html.

ROALD DAHL'S (D) (B) (J) (C) (S) (A)

MATILDA: THE MUSICAL
June 13, 2 p.m.
Grades K–12, adults, pricing for groups of 15 or more starts at \$36 Ahmanson Theatre, Downtown Los Angeles

From the brilliantly batty creator of *Charlie and the Chocolate Factory* and *Fantastic Mr. Fox* comes the Tony Award®-winning *Matilda: The Musical*, the story of an extraordinary girl who dreams of a better life. Armed with a vivid imagination and a sharp mind, Matilda dares to take a stand and change her own destiny. In addition to exclusive pricing on tickets, groups of 15 or more will receive patches for each attendee, a CD soundtrack for the group leader, and a post-show Q&A for a small surcharge. To reserve your group now, call 213-972-7231.

PROGRAM AIDE TRAINING (C) (S) (A)

June 20, 10 a.m.–3:30 p.m. Woodland Hills Service Center
Grades 6–12, \$25 registered girl/\$35 non-registered girl

Be a role model and deepen your understanding of leadership development! Program aides guide younger girls to be leaders in their own lives and in the world. This training helps girls gain skills needed to work with younger girls, peers, and adult volunteers. Program aides may put their skills into practice working at council programs, summer programs, and at troop- and service unit-led events.

GOLD AWARD WORKSHOP (S) (A)

July 14, 6:30–8:30 p.m. Woodland Hills Service Center
July 14, 6–8 p.m. Long Beach Service Center
Grades 9–12, \$15 registered girl/\$25 non-registered girl, \$10 adult

This workshop prepares Senior and Ambassador Girl Scouts to embark upon the Gold Award process. Girls learn how to choose and design a project to be measurable and sustainable. The workshop covers the proposal, interview, execution, and pre- and post-paperwork. To attend, girls should be near completion of their prerequisites. Leaders, advisors, and parents are encouraged to attend.





**I can't wait for
August!**

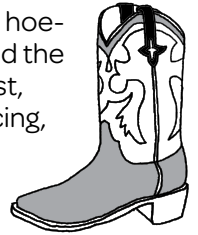
COWGIRL DAY AT CAMP MARIPOSA **B J C**

Aug. 29, 9 a.m.–5 p.m.

Grades 2–6 \$40 registered girl/\$45 non-registered girl, \$25 adult

Camp Mariposa

What's better than an old fashioned hoe-down? A Girl Scout hoe-down! Spend the day learning the ways of the Old West, including outdoor cooking, line dancing, and much more all culminating in a cowgirl dance! We provide lunch, snacks, and a fun patch!



**I can't wait for
September!**

ROCK N' ROLL ROBOTS **C S A**

WEEKEND CAMP

Aug. 7–9, overnight

Grades 8–12, \$125 registered girl, \$50 adult

Montrose Program Center

A weekend overnighter with everything you love about Girl Scouts, plus robots! Game strategy, robot design building, re-building, programming, re-programming, completion, judging—the Rock N' Roll Robots (RNRR) team has seen it all. Now they've created a camp for you! Activities include building and programming a robot, competing in a mini-tournament, learning about FIRST Tech Challenge robotics, bonding with future FTC teammates and mentors, and more! **Bring your mentors (adult volunteers)!** Starting a new FTC team? Mentors of RNRR are happy to provide guidance and training for technical and non-technical mentors. Mentor registration is \$50.

GOLD AWARD WORKSHOP **S A**

Aug. 18, 6–8 p.m. Marina del Rey Service Center

Grades 9–12, \$15 registered girl/\$25 non-registered girl, \$10 adult

This workshop prepares Senior and Ambassador Girl Scouts to embark upon the Gold Award process. Girls learn how to choose and design a project to be measurable and sustainable. The workshop covers the proposal, interview, execution, and pre- and post-paperwork. To attend, girls should be near completion of their prerequisites. Leaders, advisors, and parents are encouraged to attend.

MARINE LANDING **B J C S A**

OUTDOOR ADVENTURE OVERNIGHT

Sept. 5–6, Overnight

Grades 2–12, \$85 registered girl/\$95 non-registered girl, \$85 adult

Marine Landing

Say goodbye to the last days of summer with a fun-filled weekend on the bay. Explore all that Marine Landing has to offer, including kayaking, canoeing, and swimming. No day at camp would be complete without games, songs, and crafts, too! This is a great activity for both troops and Mom & Me's.

ADVENTURE IS OUT THERE! J C S A

Sept. 19, 9 a.m.–5 p.m.

Grades 4–12, \$55 registered girl/\$60 non-registered girl,
\$55 adult
El Ranchito

Join us as we escape from everyday life and experience a day of El Ranchito adventure! Participate in team-building on our low ropes course, hands-on arts and crafts, gaga games (a kinder, gentler dodgeball), and so much more! Challenge yourself on our premier archery range and 34-foot climbing tower.

MALL MADNESS – J C S A HOLLYWOOD FASHIONISTA

Sept. 19–20, Overnight

Grades 4–12, \$35 registered girl/\$47 non-registered girl,
\$20 adult
Sherman Oaks Fashion Square Mall

Girl Scouts, grab your glam squad and join us for a fun night of fashion and shopping! Junior, Cadette, Senior, and Ambassador Girl Scouts will have paparazzi follow them as they enjoy music, crafts, games, and so much more. Make sure to dress in your most (Girl Scout-appropriate) Hollywood fashions.

GOLD AWARD WORKSHOP S A

Sept. 24, 6:30–8:30 p.m.

Grades 9–12, \$15 registered girl/\$25 non-registered girl,
\$10 adult
Woodland Hills Service Center

This workshop prepares Senior and Ambassador Girl Scouts to embark upon the Gold Award process. Girls learn how to choose and design a project to be measurable and sustainable. The workshop covers the proposal, interview, execution, and pre- and post-paperwork. To attend, girls should be near completion of their prerequisites. Leaders, advisors, and parents are encouraged to attend.

ADVENTURE INTO THE GREAT OUTDOORS (SESSION 2) D B J C S A

Sept. 25–27, Overnight

Grades K–12 \$100 registered girl/\$110 non-registered girl,
\$100 adult
Camp Osito Rancho

Ready to take your group, troop, or family on a weekend of fun and high adventure? Begin your adventure bouldering on rocks, wandering trails, and investigating the natural world. Have fun on our climbing wall and high ropes course. Once you have tried the challenge course, head to the pond for a beginning canoe lesson. Plus, learn survival skills like building shelters and water filters.

TAMBU S A

Sept. 25–27, Overnight

Grades 9–12, prices TBA
Camp Lakota

A long-standing tradition, TAMBU is an exciting backpacking/camping skills competition for Senior and Ambassador girls only—new troops are welcome! The weekend features a friendly competition demonstrating skills in cooking, orienteering, fire building, knots/lashing, compass work, first aid, and more. All girls will receive a copy of the *Bug-a-Boo*, which will have all the information they need to know. Compete against past goals or set new ones! Troops only—troops are welcome to combine into one unit for this event.

TAMBU FOR CADETTES C

Sept. 26, Time TBA

Grades 6–8, prices TBA
Camp Lakota

An exciting backpacking/camping skills competition and a long-standing tradition! Cadettes are welcome to attend to observe and learn what this fun competition offers Senior and Ambassador Girl Scouts. TAMBU is a friendly competition demonstrating skills in cooking, orienteering, fire building, knots/lashing, compass work, first aid, and much more.





GSGLA NEWS

TROOP TRIUMPHS

Girl Scouts do amazing things.

FEED YOUR NEIGHBOR

For Troop 15975, **Feed Your Neighbor 2014** sparked a passion for helping the hungry. During Thanksgiving, the girls spearheaded an adopt-a-family service project that their service unit took on: Working with the county, every troop in the La Brea Heights Service Unit created baskets for hungry families in Inglewood and beyond with items

to make Thanksgiving dinners (including turkeys purchased by the service unit!). They also donated non-perishables to the food pantry at Warren Lane Elementary. "During Feed Your Neighbor, we talked to the girls about hunger pains. They could relate to being hungry but feeling better once their parents fed them dinner. When we told them

(cont'd →)



So Cool: Girls from La Brea Heights Service Unit provided Thanksgiving dinners to 11 hungry families.

that there are children who go to sleep hungry every night, it was like a light bulb went on," said Troop 15975 Leader Bryna Johnson. "Now, they are so happy to help other children."

Feed Your Neighbor 2015 is a council-wide service project, in which troops can take part in a hunger awareness patch program and collect canned goods on May 2, 2015. Perhaps it will inspire your troop—and service unit!—to continue to fight hunger throughout the year like it did for these girls!



Troop 8355 is using the skills they've gained with Made With Code to teach coding to elementary school kids!

MADE WITH CODE

Did you know that Girl Scouts has partnered with Google for Made With Code, a new website where girls can learn the basics of computer coding? Senior Troop 8355 in Santa Monica is very familiar with coding—the girls are members of their high school's Google Coding Club and now teach coding to third, fourth, and fifth graders at a Title I elementary school, helping kids to write lines of code. Their one-time coding event proved to be so popular that now the elementary coding club, led by these girls, meets twice a month. Better yet: The girls are training other Girl Scouts in their service unit to also become computer coding teaching assistants. To participate in Made With Code activities, visit girlscoutsla.org/pages/events/made_with_code.html. Don't forget to fill out the survey on GSGLA's Made With Code page after you've participated! You could win a trip to the Google headquarters!

Have a timely troop triumph you want to share? Send your story (and photos) to pr@girlscoutsla.org, and it might be featured in an upcoming issue of the Greater Program Guide.



FEBRUARY IS COOKIE TIME!

Cookie Cupboard Volunteers Needed

Here's a way to get some exercise and make new friends: Help at a cookie cupboard at your local service center! Cupboards are where troop leaders and volunteers pick up cookies for girls to sell. This involves counting/loading cookies into cars and processing computer orders. Adults as well as Seniors and Ambassadors can volunteer. Consider having your older girl troop or service unit team "adopt a day" at the cupboards. Visit girlscoutsla.org and look under "What's New" for more info.



National Girl Scout Cookie Weekend, Feb. 27–March 1

Need a sales booster? Tell your customers that on Saturday, Feb. 28, there will be a chance for them to win a month—or a year supply—of Girl Scout Cookies!

To celebrate National Girl Scout Cookie Weekend and Samoas' 40th birthday, "golden tickets" will be randomly placed on boxes of Samoas Girl Scout Cookies. If a customer gets one, they will win a month's worth of cookies. One lucky winner will get the grand prize: an entire year of cookies. **Schedule to booth on Saturday, Feb. 28**—your troop might be selected from the drawing and be a "golden ticket" booth. "Golden ticket" clues will be posted on our Twitter page @GirlScoutsLA to drive customers to you. Check our newsletters, website, and social media for more details!



gabbing *with* ***girl scouts***

**GSGLA's Girl Advisory Bureau (GAB) brings you
the girl perspective on council happenings.**

ToGetHerThere Luncheon

2014 EMERGING LEADER EXPERIENCE

*By Emily A.,
Ambassador*

On Dec. 10, 2014, ninety-nine other esteemed Girl Scouts and I rode to Hollywood to participate in GSGLA's 2014 ToGetHerThere Luncheon. The day started with minute-mentoring sessions. Split up into groups of about four, every group spoke with a female leader for twelve minutes and then switched tables for five rotations. This was a great way to meet and get to know different distinguished women in various fields.

Later at lunch, the Emerging Leader Girl Scouts were split up with two at each table along with five or six guests from very impressive occupations. I had the honor of sitting at a table full of Disney representatives where I met some amazing women. I even exchanged emails with an editor from *Sophia the First*, a Disney Channel television show. I want to become a voice actress when I grow up, so it is usually difficult for me to find networking



opportunities—however, there was really someone for every Girl Scout to meet in their potential field! As I sat around these amazing women, we enjoyed a delicious lunch created by Wolfgang Puck. The desserts included Girl Scout Cookie-inspired cupcakes! At the

ceremony led by KTTV’s news anchor Christine Devine, GSGLA honored Women of Distinction Julie Hamp and Robin McGraw for their dedication to girl leadership.

All in all, it was an eye-opening experience; I met so many

people and even got some contacts that I followed up on. Most importantly, everyone had an amazing time!

Seniors and Ambassadors will be able to apply for the Emerging Leader experience again in late spring—stay tuned for details.



GSGLA Robotics rules!

IT'S ABOUT THE EXCITEMENT!

By *Becky R.*,
Junior

Being on a robotics team is exciting. The first time I met my team, I felt like we were going to have a good time. We bonded over team-building activities, and we learned everyone's names. After that, I couldn't wait until next Sunday's robotics meeting. Every Sunday, we worked on our project presentation and our robot missions.

When we went to the First Lego League qualifying tournament, I was excited and nervous. I wondered if we had a good project presentation and if our robot was fully charged. At the end of the tournament, we were excited that we learned a lot and we had a good time. It was a fun learning experience that I will never forget!

IT'S ABOUT THE TEAMWORK!

By *Charlee L.*,
Junior

Since Aug. 10, I had been working with my First Lego League (FLL) Girl Scout teammates to compete in an all-day qualifying tournament in November. First, the six of us had to learn to work

together. We are not from the same towns, schools, or troops so we had never worked together (except for Becky and I). Once we developed ground rules for communicating so everyone got to be heard, we assigned jobs based on each other's strengths. Some were good at designing, some at programming, researching, or creative thinking. Robotics is fun regardless of your strengths and weaknesses, because your teammates fill in the gaps.

The day of competition was very intense and exciting. Eighteen

weeks of work was judged on this one day. Lots of things were going through my head: Will the robot work, will the judges like our research project, and did we explain our robot well enough? Even though my team did not advance to the next level, we had so much fun and all agreed that what we learned was much more important than what we won. I can't wait for next year!

Want to join (or start) a Girl Scout robotics team? Registration starts in May! Check out page 30 for more information.

2014 National Convention

“Being surrounded by thousands of people who love Girl Scouts as much as I do was a once-in-a-lifetime experience.”

GOING NATIONAL!

By Annika H.,
Ambassador

Ambassador Girl Scout Annika H. from Lakewood served as one of four GSGLA girl delegates at the 2014 National Council Session/53rd Convention in Salt Lake City. Here’s her take on the experience:

“Being surrounded by thousands of people who love Girl Scouts as much as I do was a once-in-a-lifetime experience. Throughout the week, we voted on Girl Scout issues and represented GSGLA—I even got to sit down with national Girl Scout CEO Anna Maria Chávez and interview her for our council’s ToGetHerThere Luncheon! I loved hearing all of the inspirational speakers, trading SWAPS with girls from around the world, and taking leadership classes at the Girl Scout Leadership Institute. Convention was so much more than I expected!”





Gill Barbee

SUMMER CAMP VOLUNTEER

Camp Name:

Greenbean

Camp volunteer experience:

Day camp counselor at San Fernando Valley Day Camp, general help at Marine Landing overnight, and assistant camp director at Osito Rancho She and Me weekend.

Favorite camp tradition:

Singing around the campfire

What do you see as the biggest benefits of camp for girls?

Girls develop self-confidence in areas that are sometimes only available to them at camp. Whether it's climbing a rock wall or horseback riding for the first time, taking risks at camp in an all-girl setting increases a girl's self-awareness. Girls also get to have fun in an age where school has become so stressful and unplug when life is totally electronic. Getting back to nature is a huge health benefit but also an opportunity to learn about using resources wisely.

Favorite camp volunteer memory:

I watched as my shy daughter came out of her shell and was caller at a flag ceremony. It brought tears to my eyes because I was proud of her, and as a Girl Scout for 34 years, she was following in my footsteps. Girl Scouting in my family was living on and I got to see it because I was volunteering at camp.

Top reasons why someone should volunteer at camp?

You get to pass on the traditions and joy of Girl Scout camp, while being in nature among a sisterhood that doesn't exist anywhere else.

Five Minutes With...



Eleanor M.

A FAN OF GSGLA SUMMER CAMP

Which camps have you gone to?

Mariposa, Camp Lakota, and Montrose.

What are your top three favorite things about camp?

Getting to do the crafts with my friends, playing gaga with the other girls, and going to the pond.

What was your proudest moment at camp?

My proudest moment was when we were playing on the balance beams and the group finally got into the order we were supposed to be in without getting off the beam. It was important because we worked together to switch around and help each other to stay on the beam.

What advice do you have for girls going to camp for the first time?

Listen to the counselors! You should always follow the rules, because even though there are a lot of rules, they help you stay safe.



ADULT TRAINING WEBINARS SCHEDULE

Visit the adult education calendar at www.girlscoutsla.org for details and to register for the following webinars:

FEBRUARY

- 2/5** Thursday | **Basic Leader**
- 2/11** Wednesday | **Cadette Level**
- 2/17** Tuesday | **Daisy Level**

MARCH

- 3/5** Thursday | **Brownie Level**
- 3/10** Tuesday | **Senior/Ambassador Level**
- 3/17** Tuesday | **Daisy Level**
- 3/24** Tuesday | **Thrive Goal Management**
- 3/25** Wednesday | **Indoor/Overnight**

APRIL

- 4/2** Thursday | **Cadette Level**
- 4/7** Tuesday | **Junior Level**
- 4/30** Thursday | **Daisy Level**

MAY

- 5/7** Thursday | **Brownie Level**
- 5/12** Tuesday | **Basic Leader**
- 5/20** Wednesday | **Daisy Level**

JUNE

- 6/16** Tuesday | **Brownie Level**
- 6/24** Wednesday | **Junior Level**
- 6/25** Thursday | **Senior/Ambassador Level**



SAVE THE DATE

**2015 ANNUAL MEETING AND
VOLUNTEER RECOGNITION
CEREMONY**

APRIL 18, 2015

PACIFIC PALMS HOTEL & CONFERENCE CENTER

*Hear the latest
council news!*

*Participate in
the properties
ratification vote!*

*Vote on important
council issues!*

*Honor outstanding
GSGLA volunteers!*



HIGH SCHOOL GIRLS:
Help your community and be
eligible for college scholarships!

*The Girl Scout Gold Award represents the highest
achievement in Girl Scouting.*



EARLY BIRD

**membership
renewal**

April-June

LEARN ABOUT THESE PROGRAMS AND

girl scouts
greater los angeles

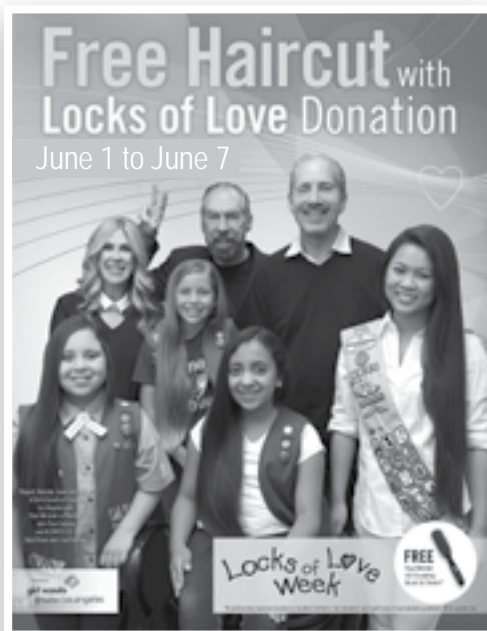


Feed your Neighbor

May 2, 2015

Feed Your Neighbor Food Drive & Service Day

Discover, connect, and take action to fight hunger in your community through this council-wide event!



Locks of Love
Week

June 1 to June 7

Get a new 'do and
donate to a great cause!

**Check our website for details on how
you can participate with GSGLA!**

MORE AT: WWW.GIRLSCOUTSLA.ORG

IT'S COOKIE TIME!

VISIT OUR GSGLA SHOPS

T-SHIRT

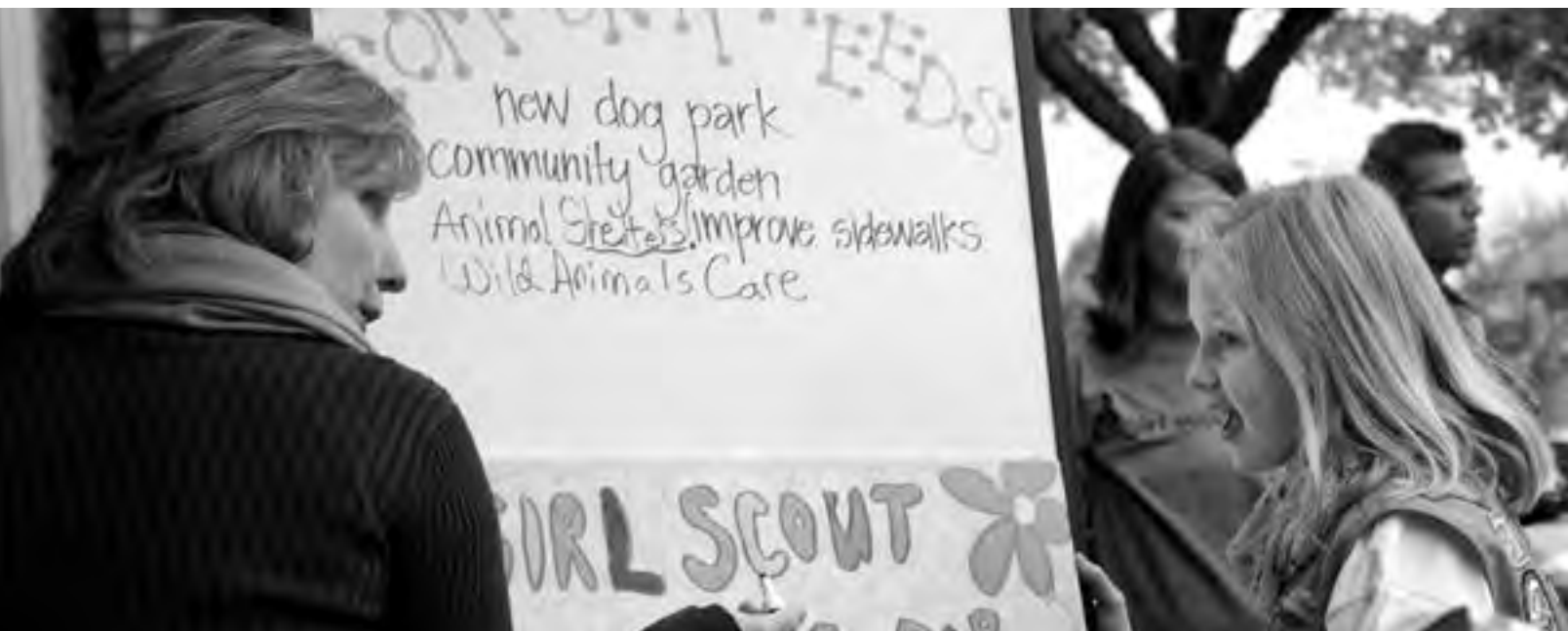
APRON

MAGNET

YARD SIGN

TRAFFIC SIGNS

Want to advertise in this program guide?



Contact ads@girlscoutsla.org to learn how.

EMERGING LEADER 2015

SENIORS AND AMBASSADORS: APPLY TO BE AN EMERGING LEADER!

Earn a unique opportunity to meet some of LA's most influential female leaders through an inspiring mentoring session and luncheon in November.

Emerging Leaders are high school-aged Girl Scouts who exemplify leadership and the characteristics of courage, confidence, and character.

Check out girlscoutsla.org in late spring for more details.

#connect



[facebook.com/GSGLA](https://www.facebook.com/GSGLA)



[@GirlScoutsLA](https://www.instagram.com/GirlScoutsLA)



[facebook.com/
GSGLACookieNutFriend](https://www.facebook.com/GSGLACookieNutFriend)



[pinterest.com/GirlScoutsLA](https://www.pinterest.com/GirlScoutsLA)



[@GirlScoutsLA](https://twitter.com/GirlScoutsLA)

Service Centers

Arcadia

101 East Wheeler Avenue
Arcadia, CA 91006

Long Beach

4040 North Bellflower Boulevard
Long Beach, CA 90808

Marina del Rey

4551 Glencoe Avenue, Suite 140
Marina del Rey, CA 90292

Montclair

9525 Monte Vista Avenue
Montclair, CA 91763

Palmdale

41307 12th Street West, Suite 105
Palmdale, CA 93551

Santa Clarita

21515 Soledad Canyon Road, Suite 118
Santa Clarita, CA 91350

Woodland Hills

20931 Burbank Boulevard, Suite A
Woodland Hills, CA 91367



801 South Grand Avenue, Suite 300
Los Angeles, CA 90017

213-213-0123
girlscoutsla.org

Let's Start Samoa Troops!

Recruit new troop leaders during
cookie season and earn prizes!



Here's how:

1. Starting Feb. 1, talk to people (at your cookie booth or anywhere!) about how they can become a troop leader.
2. Gather their contact information and report it at www.girlscoutsla.org/samoatroops by March 8.
3. If your recruit is confirmed as a new troop leader by April 17, your troop will start earning prizes!

Prizes:



A patch for every troop member
Any troop that recruits a leader to start a new troop



A tote bag for every troop member
Top recruiting troop in your service unit



A troop ice cream party at your local service center
Top recruiting troop in your service unit's region



A party at Girl Scout headquarters with GSGLA CEO Lise L. Luttgens
Top recruiting troop in the council

Prizes are
cumulative!

Full details & rules: www.girlscoutsla.org/samoatroops
Questions? Please contact Lara Branch at lbranch@girlscoutsla.org.



801 S. Grand Ave #300
Los Angeles, CA 90017
www.girlscoutsla.org

Non-Profit Org
U.S. Postage
PAID
Anaheim, CA
Permit #288

